

# NEWSLETTER

## Animal Behavior Society

Vol. 31, No. 3  
August, 1986  
A quarterly publication

*Terry Christenson, ABS Secretary*  
*Jay Hansche, Associate Editor, ABS Newsletter*  
*Department of Psychology, Tulane University, New Orleans, LA 70118*

### NEW ABS FELLOW

Devra Kleiman has been elected Fellow of the Society. Devra served as ABS President during the 1983-84 term. She is currently the Assistant Director for Research at the National Zoological Park in Washington D.C.

### ALLEE STUDENT COMPETITION AWARD

The winner of the 1986 Allee competition for the best student paper presented at the annual convention was Mary Victoria McDonald, Dept of Zoology, University of Florida for the paper entitled "Vocalizations and reproductive behavior in seaside sparrows". The runner-up was Eldridge S. Adams, Department of Zoology, University of California at Berkeley. A total of 15 Allee papers were presented in competition at the Tucson meetings.

### FIRST FOUNDER'S MEMORIAL AWARD

The first ABS Founder's Memorial Award for the best poster paper presented at the national convention was presented to Cresada A. Buchanan, Zoology Dept, North Carolina State University for the poster entitled "The influence of the male orthopteran's nuptial gift on the female's reproductive biology". Honorable mention goes to Michael Kaspari, Univ of Arizona, and Michelle Scott and James Taniello, Boston Univ. This year's award was given in memory of Ed Banks.

### THIRD ABS FILM FESTIVAL WINNERS

The winner of the ABS Film Award (commercial) was "Kitum, Elephant Cave" produced by Nature, WNET 13 New York. The winner of the Jack Ward Competition (non-commercial) was "Platte, River of Life" by Tom Mangelson. The competition contained extremely well qualified films, all characterized by superb photography and production.

### NORTHEAST REGIONAL ABS MEETING

The University of Vermont will host the 1986 Northeast Regional Meeting of the ABS, 31 Oct - 2 Nov. The program will feature symposia on reproduction ecology (J. Waage, organizer) and the ecology of learning (M. Bouton and M. Faneslow, organizers). In addition to contributed talks, we will have a keynote address by Dr. Jeanne Altmann. Graduate student participation is particularly encouraged; ABS members in the region will receive the second mailing in early September. For additional information contact Joan Herbers, Dept of Zoology, Univ of Vermont, Burlington VT 05405, (802) 656-0449.

### BALLOT ENCLOSED FOR ABS ELECTION

Biographic information on the candidates for Second President-Elect, Secretary, and Member-at-Large and information concerning the Constitutional amendment can be found on pages 4 and 5 of this Newsletter. BALLOT IS ON PAGE 5. Please respond; generally only a small percentage of the membership votes.

### NATURE CONSERVANCY CALL FOR HELP

Your help is needed to increase the amount of protected dry tropical forest in Guanacaste province of Costa Rica. In total, only 147 square miles of this unique forest type are protected. Currently, 39 square miles are protected in Guanacaste, however, more area in the moister upland is needed to buffer the severely threatened dry forest from normal environmental fluctuations. Planned is the purchase of 154 square miles of low-grade ranch, farm, and timber land. Contact The Nature Conservancy 1785 Massachusetts Ave, N.W. Washington D.C. 20036 (202) 483-0231.

### XXTH INTERNATIONAL ETHOLOGICAL CONFERENCE MADISON, WI, 7-16 AUGUST 1987

A first circular has just been sent to all ABS members. Plenary sessions will include: history of ethological research in North America, communication, social influences on reproduction, cultural transmission of behaviour, group social structure, parent-offspring interactions, evolution and behavioral systems, and ethology applied to animal welfare. Special events include barn dance, ethology in art exhibit, classical music concert, various day excursions, and more. U. S. attendance is limited and U.S. researchers who are applying for an invitation must submit the materials requested in the circular by 30 Sept. Send them to H. Jane Brockmann, Dept of Zoology, Univ of Florida, Gainesville FL 32611. Non-U. S. residents must send preliminary registration by 31 October to IEC-XX, Dept of Psychology, Univ of Wisconsin, Madison WI 53706. Canadians (and others) wishing to attend and not on the ABS mailing list can obtain a circular from the Host, Charles Snowdon, Dept of Psychology, Univ of Wisconsin, Madison WI 53706.

### 1987 ABS MEETINGS- WILLIAMSTOWN MA --21-26 JUNE

The following symposia will be offered: "Animal Cognition" organized by Carolyn Ristau and Peter Marler, and "Adult male mammals: Non-parental social and demographic roles" organized by Stephen Stringham. Host is Lee Drickamer, Dept of Biology, Williams College, Williamstown MA 01267.

## ABS FILM LIST

The Film Committee has completed the 1986 update of the ABS Film List. Copies are available from Pat DeCoursey, ABS Film Committee, Biology Dept, University of South Carolina, Columbia SC 29208. Please remit a check payable to the ABS for \$2.50 to cover cost of duplication and mailing.

## CALL FOR FILMS

In mid-September the ABS Film Committee will start to preview films for the 4th ABS Film Festival to be held 21-26 June at Williams College MA. Send inquiries to Pat DeCoursey, ABS Film Festival Organizer, Biology Dept, University of South Carolina, Columbia SC 29208.

## ANIMAL MISBEHAVIOUR

Those interested in contributing to another edition of Animal Misbehaviour contact Steve Rebach, Dept of Biology, Univ of Maryland-Eastern Shore, Princess Anne MD 21853.

## ABS GRADUATE PROGRAMS IN ANIMAL BEHAVIOR

About 500 copies are available. Please make sure your counseling office and library have a copy. For a fee of \$8, copies may be ordered from the Chair of the ABS Education Committee, Robert Matthews, Dept of Entomology, Univ of Georgia, Athens GA 30602.

## ABS DUES INCREASE

Due to increased expenses of running the Society, the membership attending the business meeting at Tucson voted to increase dues. Regular membership and Fellows dues for 1987 will be \$32, student membership and Emeritus members \$18, and spouse members \$14. Late renewals of membership cause a great deal of extra work for several people and they lead to shortages of copies of Animal Behaviour because printings are geared to paid memberships. So please renew soon after you receive the dues notice. A \$5 late fee will be charged to those who renew after 1 Dec.

## NOTICE TO AUTHORS SUBMITTING TO ANIMAL BEHAVIOUR

All manuscripts are reviewed by the Editor and the reviewers for possible violations of the guidelines for the care and use of animals in research of the ABS and ASAB. Manuscripts suspected of possibly violating the guidelines are sent out to members of the Animal Care Committee for independent review. The Editor's final decision is based on input from both the regular reviewers and the Committee members. If a manuscript is rejected on animal care grounds, the author(s) will be provided with an opportunity to appeal the rejection and submit a rebuttal. However, prudent authors should plan their research in accordance with the animal care guidelines, and they should provide in their manuscripts evidence and discussion that the phenomena they are studying are of real, biological importance under natural conditions, and they should discuss the ethical issues raised in their research and explicitly justify the methods and techniques used. Attention to these matters in advance will save considerable time and problems for authors, reviewers, and the editorial office.

## AWARDS

### T.C. SCHNEIRLA RESEARCH FUND

For applicants studying the evolution or development of behavior. Given in the amount of \$500 each. A one-page double spaced proposal, a one-page budget statement, other sources of support, and two letters of recommendation should be sent to Ethel Tobach, Dept of Mammology, American Museum of Natural History, Central Park West at 79th Street, New York, NY 10024. Deadline is 15 September 1986.

### L.S.B. LEAKEY FOUNDATION

The Leakey foundation supports research related to human origins, behavior and survival. Priority is given to studies in the areas of human paleontology, archaeology and environmental studies of the Miocene, Pliocene and Pleistocene; behavior of the Great Apes and other Old World primates; and the ecology and adaptation of living hunter-gatherers. Eligibility limited to doctoral or post-doctoral applicants. For further information contact Kathleen Galvin, L.S.B. Leakey Foundation Center 1-7, Pasadena CA 91125.

### ASSOCIATION FOR WOMEN IN SCIENCE FOUNDATION

The Foundation, which works to improve the status and education of women scientists, offers \$500 awards annually to outstanding female researchers in life, physical and social sciences working toward their doctoral degree. Information on the 1987 awards competition is currently available from the Assoc. For Women in Science, 2401 Virginia Ave, NW, Suite 303, Washington DC 20037 (202) 833-1998.

### AAAS SCIENTIFIC FREEDOM AND RESPONSIBILITY AWARD

The \$1000 prize is awarded annually to honor scientists and engineers whose exemplary actions, often taken at significant personal cost, have served to foster scientific freedom and responsibility. Deadline for receipt of entries is 30 Sept 1986. Nominations and requests for information should be sent to Scientific Freedom and Responsibility Award, AAAS, 1333 H. St, NW, Room 1101, Washington D.C. 20005.

## ANIMAL BEHAVIOR SOCIETY DIRECTION OF CORRESPONDENCE

ABS NEWSLETTER & general correspondence to the Society:  
Terry Christenson, Dept of Psychology  
Tulane University, New Orleans LA 70118

ANIMAL BEHAVIOUR--Manuscripts and editorial matters:  
Charles Snowdon, Dept of Psychology,  
Univ of Wisconsin, Madison WI 53706

ANIMAL BEHAVIOUR--Missing, defective, or back issues;  
changes of address:  
H. Jane Brockmann, Dept of Zoology,  
Univ of Florida, Gainesville FL 32611

## CONTRIBUTIONS TO NEWSLETTER WELCOME

We would be pleased to receive materials for the November ABS Newsletter by 1 October 1986 and the ASZ Fall Divisional Newsletter by 1 October. Send to Terry Christenson, Dept of Psychology, Tulane University, New Orleans LA 70118.

## OPPORTUNITIES

### ANIMAL BEHAVIORIST

Tenure-track position for animal behaviorist in the Dept of Psychology beginning Sept 1987. Rank open, although it is presently targeted at the assistant professor level. The applicant's background may be in either psychology or biology. The successful candidate will be expected to pursue a vigorous research program emphasizing an evolutionary approach to animal behaviour. Teaching duties include introductory and advanced courses in animal behavior, plus one service course. Submit vita, a brief statement of research interests, recent reprints and have three letters of recommendation sent to: Chair, Dept of Psychology, Univ of Washington, Seattle WA 98195. Applications received by 15 September 1986 are assured of consideration.

### POSTDOCTORAL FELLOWSHIP

To study the developmental aspects of maternal-infant relations in ducklings, especially the role of various experiences in influencing perceptual learning (recognition of parent). Starting date of 1 Sept 1986; funding secure until May 1988. Opportunity for part-time teaching available. Please send CV, statement of interests, and the names, addresses, and telephone numbers of three references to Gilbert Gottlieb, Psychology Dept, Univ of North Carolina at Greensboro, Greensboro NC 27412.

### FIELD ASSISTANT

Needed from 1 Oct to 15 Nov 1986 to assist research on migration and ecology of lesser scaup. Responsibilities include trapping, color-marking, taking census, observing, and radio-tracking ducks in northwestern Minnesota. Subsequent graduate study is a possibility at the Univ of North Dakota. Paid (dependent upon funding) and volunteer positions are available. Send resume, and names and phone numbers of at least two references, by 8 Sept, to Alan Afton, Wetland Wildlife Research Group, Minnesota DNR, 102 23rd St, Bemidji, MN 56601 (218) 755-2973.

### AMAZON WILDLIFE REHABILITATION INTERNSHIPS

Assist in the rehabilitation and return of animals to the jungle and assist in research involving primates, ocelots, and pink dolphins. Education and experience is offered in tropical ecology. For information contact Quabaug Bird Conservation Foundation, 315 Palmer Rd, Ware MA 01082.

### GRADUATE AND POST-GRADUATE STUDY

We seek graduate or post-doctoral students in behavioral ecology of northern mockingbirds (Mimus polyglottos) in southern Florida. Funds are available to support doctoral students; post-doctoral funding would be dependent on a jointly-submitted proposal. Contact Theodore Fleming, Steven Green, or Randall Breitwisch, Dept of Biology, Univ of Miami, Coral Gables FL 33124.

### RESEARCH OPPORTUNITY IN NOVA SCOTIA

The Dalhousie (Atlantic Provinces) Animal Behavior Research Station, located in the provincial wildlife park at Shubenacadie, Nova Scotia, offers opportunities for research on social behavior and development in wolves (Canis lupus) plus other indigenous vertebrate species. For information contact John Fentress, Depts of Psychology and Biology, Dalhousie Univ, Halifax, Nova Scotia B3H 4J1 Canada.

## ANNOUNCEMENTS

### EARTHWATCH

A non-profit organization which provides volunteers, funds, and recognition to research scholars in the sciences and humanities. For information on membership and opportunities contact EARTHWATCH, 680 Mount Auburn, Box 403, Watertown MA 02172.

### ALTERNATIVES TO ANIMAL USE IN RESEARCH, TESTING, AND EDUCATION PUBLICATION

This government publication is now available. Send \$16 check or money order made payable of Superintendent of Documents, U.S. Government Printing Office, Dept SSMC, Washington DC 20402. For information contact Mr. Thompson (202) 275-3340.

### NEW ENDANGERED SPECIES LISTINGS

Sonora chub (Gila ditaenia)- effective 30 May, listed by the Fish and Wildlife Service as a threatened species with designated critical habitat. This fish, which occurs in Santa Cruz County, Arizona and in Sonora, Mexico, is threatened by the introduction of exotic fish and their parasites into its habitat and by potential mining activities. Critical habitat designation requires Federal agencies to ensure that their actions are not likely to result in destruction or adverse modification of the habitat.

Hawaiian monk seal (Monachus schauinslandi)- effective 30 May, critical habitat was designated for this species. The designated habitat includes all beach areas, lagoon waters and ocean water out to 10 fathoms around many of the northwestern Hawaiian Islands.

Least Bell's vireo (Vireo bellii pusillus)- listed as endangered, effective 2 June. This migratory songbird occurs in southwestern California and northwestern Baja California, Mexico. Loss of habitat has restricted its breeding range, and nest parasitism by the brown-headed cowbird (Molothrus ater) has reduced its nesting success.

Effective 16 June, eight foreign mammal species have been added to the endangered and threatened list: Baluchistan bear (Ursus thibetanus gedrosianus), Southern bearded saki (Chiropotes satanas satanus), Buffy tufted-ear marmoset (Callithrix jacchus aurita), Leadbeater's possum (Gymnobelideus leadbeateri), Cabrera's hutia (Capromys angelcabrerai), Dwarf hutia (C. nana), Large-eared hutia (C. auritus), and Little earth hutia (C. sanfelipensis).

### NEW JOURNAL

The Journal of Biological Rhythms is devoted to an in-depth exploration of biological rhythms and underlying clock mechanisms. Papers of a descriptive, genetic, biochemical, physiological, behavioral, and modeling nature are welcome. Contact Benjamin Rusak, Editor, Dept of Psychology, Life Sciences Centre, Dalhousie Univ, Halifax, Nova Scotia, Canada B3H 4J1.



**CANDIDATES FOR 1986 ELECTION OF OFFICERS**

FOR SECOND PRESIDENT- ELECT-----

**ALISON JOLLY**

Birthdate: May 9, 1937  
Education:  
    B.A.: 1958 Cornell University  
    Ph.D.: 1962 Yale University  
Present Position: Guest Investigator, Rockefeller University  
Research Interests: Ecology, social behavior, home range use, and demography of Lemur catta and Propithecus verreauxi; evolution of primate social behavior and intelligence.  
ABS Activities: none

**PATRICK WILLIAM COLGAN**

Birthdate: December 20, 1944  
Education:  
    B.A.: 1967 University of Toronto  
    A.M.: 1968 Harvard University  
    Ph.D.: 1971 Cornell University  
Present Position: Professor of Biology and Psychology, Queen's University, Kingston Ontario  
Research Interests: Fish behavior; motivational modeling; methodology.  
ABS Activities: Editor 1982-85

FOR SECRETARY-----

**DAVID B. MILLER**

Birthdate: September 21, 1948  
Education:  
    B.A.: 1970 University of Florida  
    M.S.: 1972 University of Miami  
    Ph.D.: 1973 University of Miami  
Present Position: Associate Professor of Psychology, Dept of Psychology, Univ of Connecticut  
Research Interests: Development of instinctive behavior; auditory communication in birds, dolphins, and whales; behavioral embryology; effects of domestication on species-typical behavior.  
ABS Activities: Allee Award judge 1983; Member of Policy Committee 1983-85 and Chair 1985-88

**DAVID CHISZAR**

Birthdate: October 21, 1944  
Education:  
    B.A.: 1966 Rutgers  
    M.S.: 1968 Rutgers  
    Ph.D.: 1970 Rutgers  
Present Position: Professor of Psychology, Univ of Colorado at Boulder.  
Research Interests: Predatory behavior of reptiles, amphibians, and fish; stimulus control of foraging and predatory attack in snakes; effects of snake predation on endangered birds.  
ABS Activities: Film Committee 1983-86; Public Affairs Committee 1984-85; Allee Award judge 1984.

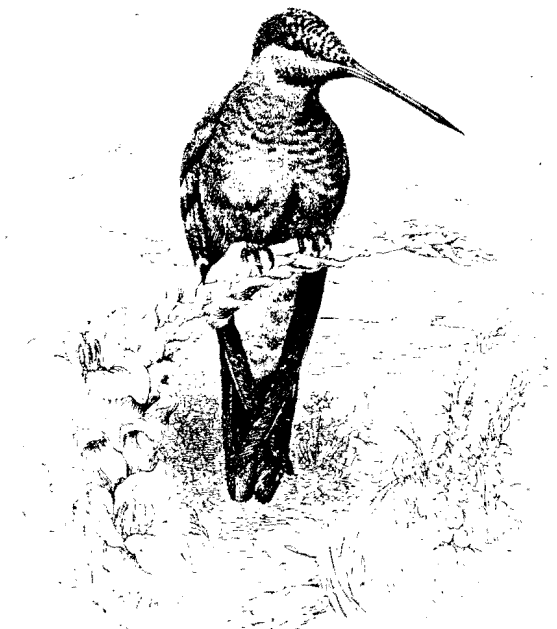
FOR MEMBER-AT-LARGE-----

**JULIA CHASE**

Birthdate: August 24, 1942  
Education:  
    B.A.: 1965 Smith College  
    Ph.D.: 1972 Indiana University  
Present Position: Associate Professor of Biology, Barnard College, Columbia University  
Research Interests: Mammalian orientation; vision in bats and marsupials; echolocation in bats and rats.  
ABS Activities: Public Affairs Committee; Education Committee; Organized and co-chaired symposium: Teaching animal behavior in laboratory and field.

**GEORGE T. BARTHALMUS**

Birthdate: October 27, 1942  
Education:  
    B.S.: 1965 Bloomsburg State College, PA.  
    M.S.: 1967 Penn State University  
    Ph.D.: 1970 Penn State University  
Present Position: Professor of Zoology, North Carolina State University  
Research Interests: Antipredatory role of amphibian skin peptides; behavioral ecology of amphibians.  
ABS Activities: Host, ABS national convention, Raleigh, 1985.



**BALLOT: 1986 GENERAL ELECTION OF  
THE ANIMAL BEHAVIOR SOCIETY**

**CONSTITUTIONAL AMENDMENT**

PLEASE FILL OUT BALLOT, DETACH ENTIRE PAGE, AND  
MAIL IT IN AN ENVELOPE BEARING YOUR NAME TO:

TERRY CHRISTENSON, SECRETARY ABS  
DEPT OF PSYCHOLOGY  
TULANE UNIVERSITY  
NEW ORLEANS LA 70118

BALLOTS POSTMARKED AFTER 10 OCT 1986 CANNOT BE  
COUNTED

ACCORDING TO ABS POLICY THE ENVELOPE  
CONTAINING YOUR BALLOT MUST BEAR YOUR NAME

You may cast write-in votes. Only members, student members,  
spouse members, and active fellows of the Animal Behavior  
Society are eligible to vote in this election. The results will be  
announced in the November 1986 ABS Newsletter. Please vote;  
in the 1985 election only 11.3% of the membership voted while  
17.2% did so in the 1984 election.

The order of listing of candidates may influence voting. Please  
avoid this bias and read the resumes of the candidates on page 4  
of this Newsletter. This year the candidates are listed in reverse  
alphabetical order. Terms begin 27 June 1987.

At the recommendation of the ad hoc Committee looking into  
certification of applied animal behaviorists, divisions within  
ABS, and commercial use or misuse of the ABS name, the  
Executive Committee recommends that two standing committees  
be added to those already established by the Constitution. (See  
page 8 of this Newsletter, items t and u.) Establishment of new  
standing committees requires a Constitutional amendment  
submitted to the membership by mail and approved by two  
third's of those returning mailed ballots.

As written, Article 7- Standing Committees lists the following  
standing committees: Membership, Policy, Education,  
Organization and Bylaws, Nominating, Animal Care, Public  
Affairs, Film, Historian, and Research. The Executive  
Committee recommends the addition of two new standing  
committees to be listed in Article 7 as follows: k. Ethics and l.  
Issues in Applied Animal Behavior.

If amended, Article 7 would read as follows:

Article 7. Standing Committees: Chairpersons of the following  
standing committees shall be appointed by the President with  
the consent of the Executive Committee; membership of  
committees shall be appointed by the President in consultation  
with the Committee Chairperson, and reported annually to the  
Executive Committee: a. Membership (Secretary ex officio) b.  
Policy c. Education d. Organization and Bylaws e. Nominating f.  
Animal Care g. Public Affairs h. Film i. Historian j. Research k.  
Ethics l. Issues in Applied Animal Behavior

ABS OFFICERS (CHECK NEXT TO NAME)

FOR SECOND PRESIDENT-ELECT:

Alison Jolly \_\_\_\_\_

Patrick Colgan \_\_\_\_\_

FOR SECRETARY:

David Miller \_\_\_\_\_

David Chiszar \_\_\_\_\_

FOR MEMBER-AT-LARGE:

Julia Chase \_\_\_\_\_

George Barthalmus \_\_\_\_\_

FOR THE PROPOSED CHANGE \_\_\_\_\_

AGAINST THE PROPOSED CHANGE \_\_\_\_\_

501 9/12/86

MINUTES OF THE ANIMAL BEHAVIOR SOCIETY ANNUAL  
BUSINESS MEETING --11 JUNE 1986--UNIVERSITY OF  
ARIZONA, TUCSON AZ  
(Policy matters are marked \*)

1. President Altmann called the meeting to order at 0959.
2. The President read an appeal for help from the Nature Conservancy concerning the Guanacaste National Park in Costa Rica.
3. The President introduced the current Officers, Officers-elect, Committee Chairs, and nominees for office.
4. Host of the XXth IEC, Charles Snowdon, noted that these are not "open" meetings for Americans, meaning a limit (200) is placed on US attendance and application is necessary. A first circular will be sent to ABS members.
5. Secretary Christenson read a summary of the major actions taken at the Executive Committee (E.C.) meeting on 8 June, as well as the annual reports of Officers and Committee Chairpersons:

The meeting was called to order by President Altmann at 09:15. Present were: Jeanne Altmann (President), Gordon Burghardt (First President-Elect), Sidney Gauthreaux, Jr. (Second President-Elect), John Fentress (next Second President-Elect), Terry Christenson (Secretary), H. Jane Brockmann (Treasurer), Lee Drickamer (Program Officer), Edward H. Burt, Jr. (Parliamentarian), Philip Lehner (Member-at-Large), Gail Michener (Member-at-Large), Charles Snowdon (Editor), Janet Randall (Member-at-Large Elect), Janis Driscoll (Animal Care Chair), Daniel Estep (Education Chair), Patricia DeCoursey (Film Chair), Ira Perelle (Membership Chair), David Miller (Policy Chair), George Waring (Public Affairs Chair), Martin Schein (Historian), Edward Barrows (AIBS Delegate), and Jerry Hirsch (AAAS Representative).

a. MOTION: To accept and approve the minutes of the 1985 E.C. Meetings. PASSED.

b. Host of the 1987 ABS meetings, Lee Drickamer, noted concern that there might be late withdrawals due to the XXth IEC meetings to be held in August. The IEC is targeting 15 January for letters of invitation.

MOTION: To establish a Feb 15th deadline for submission of Abstract and Registration fee for the 1987 ABS meetings. Host will send out an information mailing by 10 Jan 1987. PASSED

c. The President noted that Devra Kleiman was elected as ABS Fellow.

d. First President-Elect Burghardt noted that Sinauer Press has offered a \$100 book award for the winner of the Allee competition. There was agreement to accept.

e. MOTION: In the case of multiple authors on papers presented in the Founder's Award competition, certificate will be presented to and in the name of the senior author. PASSED. \*

f. Second President-Elect Gauthreaux reported that there were originally 25 Allee applicants. Eighteen sent in a manuscript, one of which was rejected. Two canceled leaving a total of 15 competitors.

MOTION: Membership of the Allee competition judging committee shall not include graduate students. PASSED. \*

g. Treasurer Brockmann reported that the Society is in good financial shape, with a balance of about \$120,000.

h. MOTION: To approve for the 1987 ASZ meetings the Burley and Gowaty symposium entitled "Sex ratio evolution and facultative variation of progeny sex ratios", and the Blaustein and Porter symposium entitled "Kin recognition in animals: empirical evidence and conceptual issues". PASSED.

i. Editor Snowdon noted the fine job that Editorial Assistant Laura Dronzek has been doing. 227 regular communications and 56 short communications were received this year, decreases of 7% and 5% respectively over the previous year. Acceptance rate for regular communications was 35.8% and for short communications 43.3%. Editorial decision was made in an average of 62 days for regular and 35 for the short communications.

Editor Snowdon noted a new policy for manuscripts involving animal care issues. If the scientific reviews would normally lead to acceptance in the absence of animal care issues, the manuscript is sent to individual members of the ABS Animal Care Committee. Editorial decision is based on the scientific and animal care reviews.

j. Parliamentarian Burt presented revisions of Bylaws Article IV, Section 9. Historian and article 7 f of Policy. If passed here, the change in Bylaws would be presented to the membership at the business meeting this week. (See point 5 below).

MOTION: To approve the Bylaws and Policy changes. PASSED. \*

k. MOTION: To approve the officer reports. PASSED.

l. Animal Care Chair Driscoll noted that an information desk on animal care guidelines and animal rights groups is available in the book display area of these meetings.

m. MOTION: To thank Bob Matthews for his fine work on the GPAB. PASSED.

n. Membership Chair Perelle noted that as of 15 May membership broke down as follows: 1554 regular, 787 student, 50 spouse, 40 fellows, 16 emeritus, and 8 emeritus fellows.

o. Public Affairs Chair Waring reported that several local newspapers and television stations had been informed of the Tucson meetings in an effort to promote awareness of animal behavior research.

p. AIBS Representative Barrows noted that animal behavior articles are needed for BioScience.

q. MOTION: To approve the Committee reports. PASSED.

r. Ad hoc Committee Chair Lehner reported on the Committee's deliberations concerning the Grant Award.

MOTION: To replace Section 11 in ABS Policy with the following Research Grants policy and to renumber sections 11-19 accordingly. PASSED \*.

Section 11. Research Grants a. The objective of the grants is to provide financial support for the biological study of animal behavior in the broadest sense, including studies at all levels of organization using descriptive and/or experimental methods under natural and/or controlled conditions. The Chairperson will attempt to maintain a diversity of research interests and experiences on the Research Grants Committee when appointing new members.

b. Only members of the ABS may apply. Current members of the Executive Committee or the Research Grant Committee are ineligible. Grant awards may not exceed (U.S.) \$1000, and no individual may receive more than one award per year. Awards will not fund salaries, stipends, tuition, single items of equipment exceeding (U.S.) \$500, or indirect costs. The Committee may recommend funding at a level less than the amount requested and may award less than the entire amount of money allocated by the Executive Committee (Bylaws Art. IV, Sec 10b) if the proposals are deemed to be not of sufficient quality.

c. The following priorities will be used as guidelines by the Committee in awarding grants: 1. Graduate students, recent doctoral recipients, and postdoctoral fellows will receive priority over senior, established researchers. 2. Small projects, entire budget. a) Seed money for long-range funding from major funding source. b) Succinct projects not expected to result in long-term project. 3. Primary funding with supplemental support expected from other source(s). 4. Equipment, with the expectation that it will be used in future projects. 5. Supplemental funding for a larger project.

d. Announcement of the availability of grant awards, where the applications and guidelines can be obtained, and the application deadline will be published in the two issues of the Newsletter preceding the application deadline. An announcement of the awards (Recipients' names, Project titles and Amount of awards) will be published in the next available issue of the Newsletter following the awards.

s. Ad hoc Committee Chair Lehner reported that the Committee did not recommend the establishment of divisions within ABS. It is recommended that the Program Officer continue to offer sub-discipline interest groups meeting space at the annual convention. The Policy Committee has been asked to explore the effects of going to divisions.

t. Ad hoc Committee Chair Lehner reported that the Committee noted a need to recognize the broad range of ethical issues that are likely to confront ABS members. A number of issues, in particular the misuse of the Animal Behavior Society name, have recently arisen.

MOTION: The Animal Behavior Society establish a standing Ethics Committee. PASSED.

As this requires a Constitutional amendment, the following was moved so that work on outlining committee duties could begin.

MOTION: The President appoint an ad hoc ethics committee. PASSED.

u. Ad hoc Committee Chair Lehner noted that there is an immediate need for a certification program for applied animal behaviorists. There was some discussion as to merits of certification, registration, approval systems, etc, and the following was offered:

MOTION: The ABS establish a standing Issues in Applied Animal Behavior Committee. PASSED.

To establish more specific guidelines for this committee prior to the required Constitutional amendment, the following was offered:

MOTION: The President appoint an ad hoc Issues in Applied Animal Behavior Committee. PASSED.

v. There was discussion about how the Executive Committee approaches situations in which there may have been a violation of ABS Animal Care Guidelines. This issue is under further consideration.

w. Education Chair Estep presented a draft of the Careers in Animal Behavior brochure. This will soon be available.

x. MOTION: To thank Ed Price for his generous efforts on the Animal Behavior in Laboratory and Field publication. PASSED.

y. MOTION. To place the ABS/ASAB Guidelines For the Use of Animal in Research into ABS Policy, and to thank Zuleyma Halpin for her efforts on this project. PASSED \*.

z. Education Chair Estep reported that the Committee has completed a book list for animal behavior.

MOTION: To publish the animal behavior book list in the Newsletter. PASSED.

aa. Several suggestions have been made concerning additional awards competitions that the Society might consider holding.

MOTION: The President appoint an ad hoc committee to recommend additional ABS awards. PASSED.

bb. Parliamentarian Burt suggested wording changes in Bylaws and Policy. If passed, the Bylaws change would be presented at the business meeting this week. (See item 5 below.)

MOTIONS: In the Bylaws, to clarify wording in Article 1 and reduce the number of delegates to the U.S. Ethological Committee specified in Article V. In Policy \*, to clarify wording concerning the appointment of a book review editor. PASSED.

cc. MOTION: To allot the next Secretary-Elect \$3000 for the purchase of an IBM-compatible computer. PASSED.

dd. There was discussion as to the rising costs of running the Society. If passed, the following Bylaws change will be presented to the membership at the business meeting this week. (See item 5. below.)

MOTION: To increase dues for regular, fellow and spouse members, and ASZ subscribers by \$5, and to increase dues of student and emeritus members by \$1. PASSED.

ee. The Society has been contacted by China Exchange, an organization that sends professionals to meet with counterparts in China, to see if we are interested. The Education Committee will look into the matter.

ff. MOTION: Specific requests for ABS mailing labels will be denied if 20% of the Executive Committee votes not to make them available. PASSED.

gg. The Abstract form in the November Newsletter is to be modified to clarify that if an Allee applicant pulls out of the competition or is excluded from oral presentation, he/she can still be on the program.

hh. MOTION: To approve co-sponsorship of the Lent and Watson symposium entitled "Behavioral neuromodulators: Cellular, comparative and evolutionary patterns" for the 1987 ASZ meetings. PASSED.

ii. Editor Snowden noted that there have been a few cases of auto-plagiarism, authors sending essentially the same work to the same journal or different journal under a second title.

The following took place at the second EC meeting on 12 June convened at 18:19 by President Altmann.

jj. Future meeting sites of ABS.

MOTION: To accept Tom Rambo's bid to host the 1989 meetings at Eastern Kentucky University. PASSED.

MOTION: To accept Stim Wilcox's bid to host the 1990 meetings at SUNY Binghamton. PASSED.

kk. Policy statement concerning the taping of paper presentations at the ABS annual meeting.

MOTION: 1. A person who desires to make audio recordings of a presentation must obtain permission from the speaker. 2. If a speaker's presentation is to be recorded, this will be announced by the moderator. 3. The following statements will appear in the program booklet: a) "Audio recording of presentations at ABS meetings is permitted only with prior approval of the speaker." b) "Video taping may be allowed only under special circumstances with prior approval of the Program Officer, the Executive Committee, and the speaker." PASSED \*

ll. MOTION: To approve the Ristau and Marler offering entitled "Animal cognition" for the 1987 ABS annual meeting and make \$1000 available to the organizers. PASSED.

MOTION: To approve the Stringham offering entitled "Adult male mammals: non-parental social and demographic roles" for the 1987 ABS annual meeting and make \$1000 available to the organizer. PASSED.

mm. A special committee consisting of Gauthreaux, Schein, DeCoursey, and Halpin examined ASZ/ABS relations. The following are their recommendations. If approved, they will be forwarded to the ASZ.

MOTION: a) That the ASZ Division of Animal Behavior elect a Secretary/Program Officer for a three year term. Call for nominations to appear in the Division Newsletter. The ABS Secretary and Program Officer would work with this officer. b) The ASZ Division of Animal Behavior elect a liaison officer to the ABS for a three year term. The ABS Nominating Committee would develop a slate of nominees to be published in Division Newsletter along with vitae. This liaison officer must be a member of ABS and ASZ. Duties: chief executive officer of Division, preside over divisional meetings, represent division at ASZ meetings, and represent division at ABS meetings. PASSED.

nn. MOTION: For the Treasurer to determine by 1 April if sufficient funds are available for a Research Award competition next year. PASSED.

19:57. E C Meeting adjourned.

5. Parliamentarian Burt presented three Bylaws changes. The first deals with a dues increase, the second notes that the Historian shall facilitate transfer of archival materials to the Smithsonian, and the third reduces the numbers of U.S. delegates to the IEC because of recent changes in IEC policy.

MOTION: Change Article I. Dues: Section 1 to read as follows: "Annual dues shall be (U.S.) \$32.00 for Members and Fellows. Annual dues for members who are students and Members Emeritus shall be (U.S.) \$18.00 except for changes approved under Article 9, Section 2, of the Constitution. PASSED."

MOTION: Change Article IV. Duties of Committees: Section 9 Historian: Subsection a to read as follows: "Shall facilitate transfer of archival material to the Smithsonian Institution." PASSED.

MOTION: Change Article V. Election of Delegates--The U.S. Ethological Conference Committee to read as follows: Section 1. a. The Executive Committee shall nominate two candidates. Each member of the Executive Committee presents two names, ranked 1 and 2. The two persons ranking highest shall be nominated). b. These names are added to two names supplied by the USECC. All four names are placed on a separate ballot included with the regular ABS ballot. A short biographical sketch of each candidate is included. c. The U.S. membership of ABS elects two of the four candidates. The person receiving the most delegates is the elected delegate, the person with the next most votes is the elected alternate. d. The names of the two winners are presented to the USECC for final approval. e. Elections will take place on alternate years or at the request of the USECC. f. The term of office shall be six years. PASSED.

6. MOTION: to approve minutes of the 1985 business meeting. PASSED.

7. Steve Rebach noted that Animal Misbehaviour needs manuscripts.

8. President Altmann, other Officers, and Committee Chairs were thanked for their efforts.

9. Meeting was adjourned at 11:01.

## MEETINGS

AIBS ANNUAL MEETING- 10-14 August, Univ of Mass, Amherst. Includes the following societies: Amer Fern Soc, Assoc for Tropical Biology, Botanical Soc of Amer, and Mycological Soc of Amer. Contact AIBS, Meetings Dept, 730 11th St N.W., Washington D.C. 20001 (202) 628-1500.

SOCIETY FOR THE STUDY OF AMPHIBIANS AND REPTILES / HERPETOLOGISTS LEAGUE JOINT ANNUAL MEETING- 10-15 August, Southwest Missouri State University. Contact Robert Wilkinson, Life Sciences Department, SMSU, Springfield MO 65802.

ECOLOGICAL SOCIETY OF AMERICA- 10-16 August, Syracuse, NY. Contact Mohan Wali or Robert Burgess, Dept of Environmental Forest Biology, SUNY- College of Environ Science and Forestry, Syracuse NY 13210 (315) 470-6500.

AMERICAN ORNITHOLOGISTS' UNION-17-21 August, Mississippi State, MS. Contact Jerome A. Jackson, Dept. of Biological Sciences, PO Drawer Z, Mississippi State University, Mississippi State MS 39762 (661) 325-3120.

1986 10TH INTERNATIONAL CONGRESS OF THE INTERNATIONAL UNION FOR THE STUDY OF SOCIAL INSECTS 18-22 August, Munich, West Germany. For information and registration forms contact Dr. C. Czoppelt, Max-Planck-Institut fur Biochemie, D-8033 Martinsried, West Germany.

DELTA SOCIETY INTERNATIONAL CONFERENCE- 20-23 August in Boston. Topics to be covered in this conference are diverse, including any area involving interaction of people with animals or with nature. For further information contact Lynn Grotzky, Delta Society, 212 Wells Ave South, Suite C, Renton WA 98055.

AMERICAN PSYCHOLOGICAL ASSOCIATION- 22-26 August, Washington, DC. Contact Don Kent, American Psychological Association, 1200 - 17th Street, NW, Washington DC 20036 (202) 955-7710.

INTERNATIONAL SOCIETY FOR NEUROETHOLOGY CONGRESS- 1-6 Sept, Tokyo, Japan. Plenary sessions include: neural processing of sensory information; learning and neural plasticity; neurogenetics and behavior development; neuroethology and human behavioral biology; behavioral rhythms. For further information contact Kiyoshi Aoki, Life Science Institute, Sophia University, Chiyoda-ku, Tokyo, 112, Japan.

1986 INTERNATIONAL SOCIETY FOR COMPARATIVE PSYCHOLOGY- 6-14 Sept, Univ of Costa Rica, Abelardo Brenes will host. Program includes: Costa Rican natural history and culture, field trips, workshops, symposia, and paper sessions. Contact Ethel Tobach, ISCP President, American Museum of Natural History, Central Park West at 79th St, New York NY 10024.

AMERICAN ASSOCIATION OF ZOOLOGICAL PARKS AND AQUARIUMS- 14-19 Sept hosted by the Minnesota Zoological Garden. Contact Steve Iserman, Minnesota Zoological Garden, 12101 Johnny Cake Ridge Rd, Apple Valley MN 55124.

12TH ANNUAL AMERICAN ASSOCIATION OF ZOO KEEPERS NATIONAL CONFERENCE- 28 Sept. - 2 October, Winnipeg, Manitoba. Hosted by the Assiniboine Park Zookeepers Association. Theme is "Animal Integrity in Captivity". Contact Bob Debets, Assiniboine Park Zoo, 2355 Corydon Avenue, Winnipeg, Manitoba, Canada R3P 0R5.

WORKSHOP ON ZOO-UNIVERSITY COLLABORATIVE EFFORTS IN THE CONSERVATION OF ENDANGERED PRIMATES - 15-17 October, Madison, WI. Sponsored by the Wisconsin Regional Primate Research Center and the Milwaukee County Zoo. Topics include: reproductive biology, primate medicine, behavior, conservation, public awareness programs and exhibit design. Contact Anne Savage, WRPRC, Univ of Wisconsin, 1223 Capitol Ct., Madison WI 53715.

CONFERENCE ON THE NEURAL MECHANISMS AND BIOLOGICAL SIGNIFICANCE OF GROOMING BEHAVIOR- 15-17 October, New York Academy of Sciences. Topics include: environmental and pharmacological modulation; neurochemistry; anatomical substrates and electrophysiological correlates; and ethological and comparative aspects. Contact Conference Dept, New York Academy Sciences, 2 East 63rd Street, NY NY 10021

CONFERENCE ON THE WELFARE OF LABORATORY ANIMALS- 16-17 Oct, Houston, TX. Contact Barbara Orlans, 4805 St. Elmo Ave, Bethesda, MD 20814, (301) 654-6390, or Kenneth Gray, 6723 Bertner, Box 63, Houston TX 77030.

INTERNATIONAL MEETING FOR BEHAVIORAL ECOLOGY- 17-19 October at New York State Museum in Albany, New York. Program includes: invited speakers, sessions for submitted posters, and workshops. Working committees will report on the plausibility of a new scientific society, a new journal of behavioral ecology, and plans for future meetings. Contact Behavioral Ecology Group, Dept of Biol Sci, SUNY at Albany, 1400 Washington Avenue, Albany NY 12222.

CONSERVATION 2100: A FAIRFIELD OSBORN SYMPOSIUM, 20-24 Oct, New York. Offered by Wildlife Conservation International, New York Zoological Society, in honor of Fairfield Osborn, former president of NYZS and a pioneer in wildlife conservation efforts. To assess current state of world wide conservation, and determine priority areas for future action and research. Contact Mary C. Pearl at (212) 865-6571.

NORTHEAST REGIONAL MEETING- 31 October-2 November, University of Vermont. For additional information contact Joan M. Herbers, Department of Zoology, Univ of Vermont, Burlington VT 05405 (802) 656-0449.

INTERNATIONAL SOCIETY FOR DEVELOPMENTAL PSYCHOBIOLOGY- 6-9 Nov, Historic Inns of Annapolis, Annapolis Maryland. For further information contact Jerry Rudy, Dept of Psychology, Univ of Colorado, Boulder CO 80309.

UNDERSTANDING CHIMPANZEES SYMPOSIUM- 7-9 November, Chicago Academy of Sciences. Chimpanzee intelligence, development, sexual behavior, mother-infant, tool technology, vocal communication, and conservation. Speakers include J. Goodall, A. Pierce, D. Rumbaugh, and R. Fouts. Contact C A S, 2001 N Clark St, Chicago IL 60614.

ENTOMOLOGICAL SOCIETY OF AMERICA- 8-12 December, Reno, Nevada. Contact William A. Allen, Dept of Entomology, Virginia Polytechnic Institute and State University, Blacksburg VA 24061 (703) 961-6772.

1986 ASZ MEETINGS- 27-30 Dec, Nashville. Contact Mary Adams-Wiley, ASZ, Box 2739, California Lutheran College, Thousand Oaks CA 91360.

1987 SIXTH BIENNIAL CONFERENCE ON THE ECOLOGICAL AND EVOLUTIONARY ETHOLOGY OF FISHES- 17-20 May, Lamar Univ, Beaumont, Texas. Contributed papers plus two short symposia: coastal migrations in marine fishes, and correlates of sex change in fishes. Contact David L. Bechler, Dept of Biology, PO Box 10037, Lamar Univ, Beaumont TX 77710.

1987 ABS MEETINGS- 21-26 June, Williams College, Williamstown MA 01267. Host is Lee Drickamer, Dept of Biology.

1987 XXTH INTERNATIONAL ETHOLOGICAL CONFERENCE 7-16 August, Madison WI. Host is Charles Snowdon, Dept of Psychology, Univ of Wisconsin, Madison WI 53706.

1987 ASZ MEETINGS- 27-30 Dec, New Orleans.

1989 ABS MEETINGS- Northern Kentucky University.

1990 ABS MEETINGS- SUNY Binghamton.

#### SYMPOSIUM PROPOSALS WANTED

If you are interested in organizing a symposium or invited paper session for an upcoming ABS meeting, contact the ABS Program Officer, Susan Riechert, Dept of Zoology, Univ of Tennessee, Knoxville TN 37916 (615) 974-6187. If you are interested in organizing a symposium for the 1988 San Francisco ASZ meetings, contact Mary Adams-Wiley at the ASZ, PO Box 2739, California Lutheran College, Thousand Oaks CA 91360.

#### 1986 MEETING OF THE AMERICAN SOCIETY OF ZOOLOGISTS

December 27-30, Opryland Hotel, Nashville TN. The Animal Behavior Society meets with the American Microscopical Society, Crustacean Society, International Association of Astacology, and the Society of Systematic Zoology.

Symposium: Energetics and Animal Behavior organized by John L. Gittleman and Steven D. Thompson; sponsored by ABS and the Division of Animal Behavior. All day December 28. Tentative program includes: Energetic constraints on mammalian reproduction (Gittleman, J.L. & Thompson, S.D.); A Historical view of energetics and behavior (Bartholomew, G.A.); Comparative use of the same flower patch by two hummingbird species: Energy maximizers and time minimizers revisited (Carpenter, F.L. & Hixon, M.); Energetics of free-living birds: Laboratory and field measurements (Goldstein, D.L.); The influence of physiological state on the defence responses of ectotherms (Hertz, P.E. & Huey, R.B.); Costs of fighting in spiders (Riechert, S.E.); Energetic constraints on acoustic communication (Ryan, M.J.); Energetic constraints and behavioral models of optimality (Kingsolver, J.G.); Energetics of spread-winged behavior in birds (Hennemann W.W. III).

Symposium: Habitat Selection and Evolution organized by Michael L. Rosenzweig; sponsored by the ABS and Division of Animal Behavior, Ecology, Invertebrate Zoology, and Systematic Zoology. Morning of December 29. Tentative program includes: Coevolution of optimal habitat selection (Rosenzweig, M.L.); Habitat selectivity and species selection in grazers (Vrba, E.); Genetic heterogeneity and spatial variability in *Drosophila* (Taylor, C.); Genetic heterogeneity and habitat variability in space and time: The case of the pitcher plant mosquito (Istock, C.); Habitat selection and non-random mating in speciation (Rice, W.); Density-dependent habitat selection and the dimensionality of natural systems (Schaffer, W.).

Animal Behavior Division contributed oral papers are scheduled for the morning of December 29 and all day on December 30. Posters may be viewed the afternoon of December 29. Abstracts will be published in the *American Zoologist* 26(4). For further information contact Mary Adams-Wiley, ASZ, Box 2739 California Lutheran College, Thousand Oaks CA 91360.

#### CONSIDER MEMBERSHIP IN THESE SOCIETIES

##### INTERNATIONAL SOCIETY OF HUMAN ETHOLOGY

This society promotes ethological perspectives on the study of human behavior. It encourages empirical research that addresses questions of individual development; environmental, ecological, and social processes which elicit and support behavior patterns function and significance of behavior; and comparative and evolutionary problems. For \$10 (\$5-student) benefits include an informative newsletter. The book reviews and current literature listings are particularly useful. Contact Robert Adams, Dept of Psychology, Eastern Kentucky University, Richmond KY 40475.

##### SOCIETY FOR RESEARCH ON BIOLOGICAL RHYTHMS

An organizational meeting for this newly-forming society will be held in July 1987 at the Gordon Conference on Chronobiology. For information contact Fred Turek, Dept of Neurobiology and Physiology, Northwestern University, Evanston IL 60201.

##### INTERNATIONAL SOCIETY FOR COMPARATIVE PSYCHOLOGY

Full membership is \$5 (US) and student membership is \$2. For information contact Charles Tolman, Dept of Psychology, University of Victoria, Victoria, British Columbia, Canada.

##### AMERICAN SOCIETY OF ZOOLOGISTS

Receive *American Zoologist*, Newsletters from the Society, discounts on some journals, special bulletins, and more. Annual dues are \$48 for a regular member and \$20 for graduate student members. Contact Mary Adams-Wiley, ASZ, Box 2739

##### EQUINE BEHAVIOUR STUDY CIRCLE

An invitation to apply for membership. Their journal, *Equine Behaviour*, publishes abstracts, book reviews, and scholarly and informal articles concerning all aspects of equine behavior. Annual membership dues are (US) \$10 and this includes the journal. Send check or international money order payable in pounds sterling to The Equine Behaviour Study Circle, Moyra Williams, Leyland Farm, Gawcott, Buckingham, England MK18 4HS.

## ABS OFFICERS

PRESIDENT: Gordon Burghardt, Dept of Psych, Univ of Tennessee, Knoxville TN 37916  
1st PRESIDENT-ELECT: Sidney Gauthreaux, Jr., Dept of Zoology, Clemson Univ, Clemson SC 29631  
2nd PRESIDENT-ELECT: John Fentress, Depts Psych & Biology, Dalhousie Univ, Halifax, Nova Scotia, Canada B3H 4J1  
PAST PRESIDENT: Jeanne Altmann, Dept Conservation Biology, Chicago Zoological Park, Brookfield IL 60513  
SECRETARY: (1984-87) Terry Christenson, Dept of Psychology, Tulane Univ, New Orleans LA 70118.  
TREASURER: (1985-88) H. Jane Brockmann, Dept of Zoology, Univ of Florida, Gainesville FL 32611  
PROGRAM OFFICER: (1986-89) Susan Riechert, Dept Zoology, Univ of Tennessee, Knoxville TN 37916  
PARLIAMENTARIAN: (1986-89) Edward H. Burt, Jr., Dept Zool, Ohio Wesleyan Univ, Delaware OH 43015  
EDITOR: (1985-88) Charles Snowdon, Dept Psychology, Univ of Wisconsin, Madison WI 53706  
MEMBER-AT-LARGE: (1984-87) Joan S. Lockard, Dept Neur. Surgery, Univ Washington, Seattle WA 98195  
MEMBER-AT-LARGE: (1985-88) Gail Michener, Dept Biol Sci Univ of Lethbridge, Lethbridge Alberta, Canada T1K 3M4  
MEMBER-AT-LARGE (1986-89) Jan Randall, Biology Dept, Central Missouri State Univ, Warrensburg MO 64093

## ABS COMMITTEE MEMBERSHIP

(Year term expires in parentheses)

(Send your ideas and comments to these committees)

### ANIMAL CARE:

CHAIR, Janis Driscoll (1988)  
Benjamin Beck (1988)  
Judith Gibber (1987)  
Jennifer Mather (1989)  
Thomas Rambo (1989)  
Victoria Voith (1988)

### EDUCATION:

CHAIR, Daniel Estep (1988)  
Jeanne Altmann (ex officio)  
Penny Bernstein (1989)  
John Fentress (ex officio)  
Michael Johnson (1989)  
Robert Matthews (1988)  
Donna Schroeder (1988)  
Lawrence Williams (1988)

### FILM:

CHAIR, Patricia DeCoursey (1987)  
Stevan L. Hopp (1988)  
Ronald Langley (1987)  
Jay Labov (1989)  
Debora Forthman Quick (1989)  
Anna E. Ross (1988)

### ABS HISTORIAN:

Martin Schein

### MEMBERSHIP:

CHAIR, Ira Perelle (1988)  
Millicent Ficken (1987)

Adrienne Massey (1988)  
Helmut Mueller (1988)  
Stim Wilcox (1989)  
Keith Waddington (1987)

### NOMINATIONS:

Jeanne Altmann  
Colin Beer  
Devra Kleiman

### ORGANIZATION AND BYLAWS:

CHAIR, Edward Burt, Jr. (ex officio)  
Elizabeth Mallory (1987)  
Patrick McArthur (1988)  
Patricia Schwagmeyer (1989)

### POLICY

CHAIR, David Miller (1988)  
Jeanne Altmann (ex officio)  
Charles F. Blaich (1988)  
Edward Burt, Jr. (ex officio)  
David Duvall (1989)  
John Fentress (ex officio)  
L. James Shapiro (1989)  
C. N. Slobodchikoff (1989)  
John T. Williams (1988)

### PUBLIC AFFAIRS:

CHAIR, George Waring (1989)  
Peter W. Bergstrom (1988)  
Chris Evans (1987)  
Dorothy M. Fragaszy (1988)  
Michael Renner (1989)  
Fred Stollnitz (1989)

### RESEARCH:

CHAIR, Joan Lockard (1987)  
Andrew Blaustein (1987)  
Warren Holmes (1989)  
Martha McClintock (1988)  
Gail Michener (1988)  
Janet Randall (1989)

### ETHICS (ad hoc):

CHAIR, Michael Beecher (1987)  
Donald Dewsbury (1987)  
Bennet Galef (1987)  
John Vandenberg (1987)  
Meredith West (1987)

### ISSUES IN APPLIED ANIMAL BEHAVIOR (ad hoc):

CHAIR, Peter Borchelt (1987)  
Martin Daly (1987)  
Neil Greenberg (1987)  
Jack Hailman (1987)  
Philip Lehner (1987)  
Edward Price (1987)

### ABS DELEGATE TO AIBS:

Edward Barrows

### SECTION G-AAAS REPRESENTATIVE:

Jerry Hirsch

LABORATORY EXERCISES IN ANIMAL BEHAVIOR

Do you have a favorite lab in animal behavior that you would like to share with colleagues in the Animal Behavior Society? If so, please participate in a clearing house for Animal Behavior Lab Experiments by completing the following form, and returning it to the Chair of the Education Committee, Daniel Estep.

When a number of replies have been obtained, a complete list will be published in the ABS NEWSLETTER; additional copies will also be available from Daniel Estep. If you decide to participate and an individual requests an exercise write-up from you, please have the exercise written in ready-to-use form similar to those in the Price & Stokes manual ANIMAL BEHAVIOR IN THE LABORATORY AND FIELD, including a complete, detailed list of directions, materials, and special considerations (i.e., animal care, maintenance, special solutions, etc).

Your cooperation will be appreciated by all those who need new animal behavior lab materials and ideas.

Title: \_\_\_\_\_

Level of presentation:    underclassmen    upperclassmen    graduate

Length of  
lab: \_\_\_\_\_

Experimental subject(s):  
(Common and Latin  
names) \_\_\_\_\_

Description of lab objectives (up to 50 words, continue on reverse if necessary):

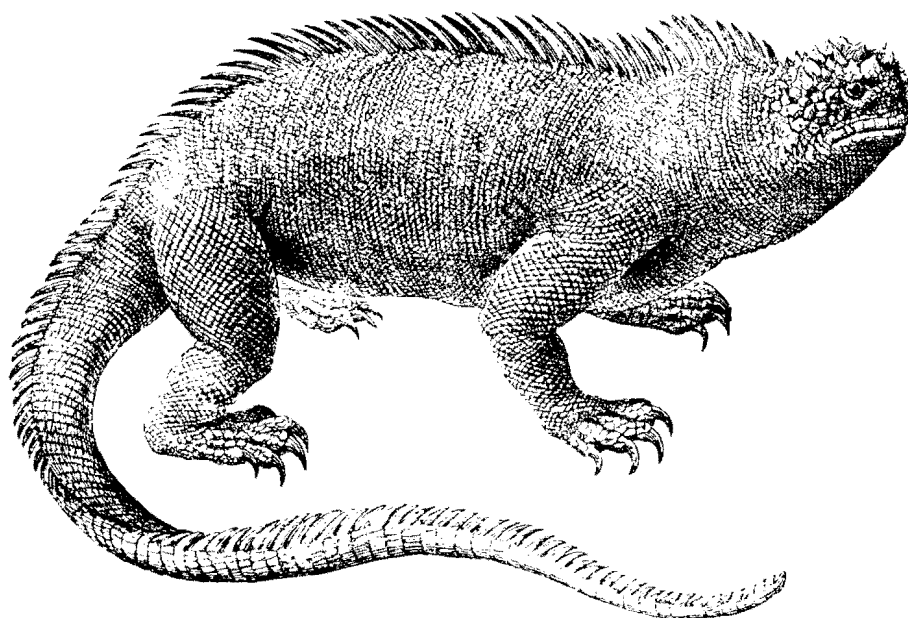
Special equipment, skills, or habitat required:

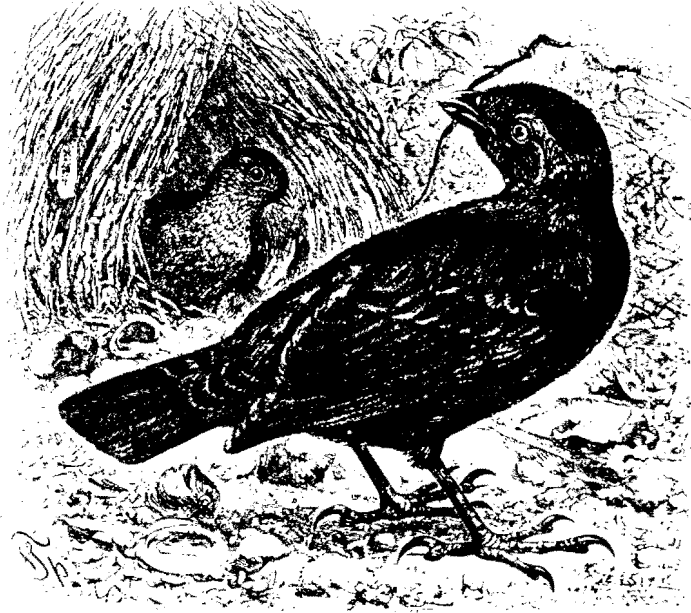
Address inquiries for this lab exercise to:

Name \_\_\_\_\_

Address \_\_\_\_\_

SUBMIT THIS FORM TO: Daniel Estep, Department of Psychology, University of Georgia, Athens GA 30602





ABS FELLOWS

(Year of election in parentheses)

Active:

Richard D. Alexander (1979)  
 Stuart A. Altmann (1969)  
 Lester R. Aronson (1967)  
 George W. Barlow (1970)  
 Frank A. Beach (1966)  
 Irwin S. Bernstein (1979)  
 Jerram Brown (1979)  
 Charles C. Carpenter (1970)  
 Nicholas E. Collias (1967)  
 David E. Davis (1967)  
 Victor H. Denenberg (1977)  
 Donald A. Dewsbury (1982)  
 John F. Eisenberg (1977)  
 Thomas Eisner (1970)  
 Stephen T. Emlen (1979)  
 Howard E. Evans (1982)  
 Hubert W. Frings (1967)  
 John L. Fuller (1967)  
 Benson E. Ginsburg (1967)  
 Gilbert Gottlieb (1982)  
 Donald R. Griffin (1966)  
 Jack P. Hailman (1984)  
 Edgar B. Hale (1968)  
 Eckhard H. Hess (1977)

Jerry Hirsch (1973)  
 Miles H. L. Keenleyside (1982)  
 John A. King (1968)  
 Devra Kleiman (1986)  
 Peter H. Klopfer (1968)  
 Masakazu Konishi (1982)  
 Peter R. Marler (1973)  
 William A. Mason (1979)  
 D. Frank McKinney (1979)  
 Arthur A. Myrberg, Jr. (1982)  
 Gordon H. Orians (1982)  
 Edward O. Price (1984)  
 Ernst S. Reese (1977)  
 Jay S. Rosenblatt (1970)  
 Martin W. Schein (1973)  
 Wolfgang M. Schleidt (1977)  
 John Paul Scott (1966)  
 Paul B. Siegel (1979)  
 Charles H. Southwick (1973)  
 Herman T. Speith (1966)  
 William N. Tavolga (1968)  
 C. Richard Terman (1982)  
 Ethel Tobach (1970)  
 John G. Vandenberg (1977)  
 Edward O. Wilson (1968)

Inactive:

George A. Bartholomew (1968)  
 John B. Calhoun (1968)

John T. Emlen (1966)  
 William Etkin (1967)  
 Viktor Hamburger (1970)  
 Arthur D. Hasler (1967)  
 Ernst Mayr (1968)  
 Charles D. Michener (1967)  
 David M. Rioch (1966)  
 Arthur J. Riopelle (1968)  
 George B. Schaller (1970)  
 Allen W. Stokes (1973)  
 William S. Verplanck (1969)  
 Sherwood L. Washburn (1968)

Deceased:

Margaret Altmann (1966)  
 Edwin M. Banks (1969)  
 James C. Braddock (1969)  
 Frank A. Brown (1969)  
 Leonard Carmichael (1969)  
 C. R. Carpenter (1966)  
 Lee R. Dice (1966)  
 Theodosius Dobzhansky (1969)  
 Alfred E. Emerson (1966)  
 A. M. Guhl (1966)  
 William T. Keeton (1977)  
 Z. Y. Kuo (1966)  
 Daniel S. Lehrman (1967)  
 Kenneth Roeder (1966)  
 T. C. Schnerla (1966)

APPLICATION FOR MEMBERSHIP: ANIMAL BEHAVIOR SOCIETY

Name in full \_\_\_\_\_ Degrees \_\_\_\_\_

Address \_\_\_\_\_

\_\_\_\_\_ Phone \_\_\_\_\_

Position \_\_\_\_\_ Institution \_\_\_\_\_

- \_\_\_\_\_ Member- \$32 (U.S.) Receive Animal Behaviour and Newsletter
- \_\_\_\_\_ Student Member -\$18 Receive Animal Behaviour and Newsletter
- \_\_\_\_\_ Spouse Member - \$14 Receive Newsletter

My student membership application is endorsed by (Dept Head, ABS Member or Fellow):

Name \_\_\_\_\_ Signature \_\_\_\_\_

This application form should be sent with remittance (make check payable to Animal Behavior Society or include your Mastercard

# \_\_\_\_\_ or VISA # \_\_\_\_\_

Card Holder's signature \_\_\_\_\_ ) to:

H. Jane Brockmann, ABS Treasurer, Dept of Zoology, Univ of Florida, Gainesville FL 32611.

Terry Christenson  
Dept of Psychology  
Tulane University  
New Orleans LA 70118

Non-Profit  
Organization  
U.S. Postage  
PAID  
New Orleans, La.  
Permit No. 1116