

NEWSLETTER

Animal Behavior Society

Vol. 28, No. 4
November 1983
A quarterly publication

SIDNEY A. GAUTHREAU, JR., Secretary
Dept. Zoology, Clemson University
Clemson, South Carolina 29631

Section (Division) Animal Behavior and Sociobiology
American Society of Zoologists
Ecological Society of America

ANIMAL BEHAVIOR SOCIETY 1983 ELECTION RESULTS

The new officers assume office on 18 August 1984. 280 ballots were cast (this represents 13.6% of the membership, compared to 14.6% voting in 1982 and 21% voting in 1981). Officers of the Animal Behavior Society also serve as officers of the Division of Animal Behavior of the American Society of Zoologists.

SECOND PRESIDENT-ELECT:

GORDON M. BURGHARDT
Professor of Psychology and Zoology,
University of Tennessee, Knoxville.

SECRETARY:

TERRY E. CHRISTENSON
Associate Professor of Psychology,
Tulane University, New Orleans.

MEMBER-AT-LARGE:

JOAN S. LOCKARD
Professor of Psychology and Neurological Surgery,
University of Washington School of Medicine, Seattle.

AMENDMENTS TO THE CONSTITUTION:

A two-thirds vote of members returning marked ballots is required to amend the ABS Constitution.

The amendment to add Parliamentary to the procedures for filling offices when a petition for impeachment has been filed was PASSED.

The amendment to terminate formal ties between ABS and the Ecological Society of America FAILED TO PASS.

U.S. ETHOLOGICAL CONFERENCE COMMITTEE

U.S. ABS members should vote to elect members of the USECC. The ballot appears in this ABS NEWSLETTER. USECC members serve a six year term. PLEASE VOTE NOW.

PAY YOUR 1984 ABS DUES PROMPTLY

Please pay your dues by 1 January 1984. There is a good reason for this. If your membership renewal is not processed on time, your February issue of Animal Behaviour will not be sent out with the regular mailing. Rather, it will be sent specially whenever the publisher gets the membership renewal, which will be at least one month later. The publisher maintains a computer record of those who should be receiving the journal which is entirely separate from the ABS records, so they must also have time to process the renewals. The ABS Treasurer sends a listing of changes (address changes, new members, membership renewals, etc.) to the publisher in England by the 15th of each month. If your dues are paid on time, you should receive your February issue promptly. If you do not, please let the Treasurer know immediately.

1984 ABS ANNUAL MEETING -- CALL FOR PAPERS

13-17 August, Eastern Washington University, Cheney, WA. Transmittal and Abstract Preparation Forms are included in this NEWSLETTER.

MEETINGS -- CALLS FOR PAPERS

QUEBEC ANIMAL BEHAVIOR SOCIETY: (Societe quebecoise pour l'etude biologique du comportement) 18-20 November 1983 at McGill Univ., Montreal. Invited speaker: T. H. Clutton-Brock. Contact: Louis Lefebvre, Dept. Biology, McGill Univ., 1205, av. Docteur Penfield, Montreal, Quebec H3A 1B1 Canada (ph. 514-392-5995).

SOCIETY FOR THE SCIENTIFIC STUDY OF SEX (SSSS): 18-20 Nov. 1983 at McCormick Inn, Chicago. "Toward Explanations of Sexual Attitudes and Behaviors." Planned symposia: violent pornography, sexual preference, and the role of gender in sexual selection. Deborah Weinstein, SSSS, P.O. Box 29795, Philadelphia, PA 19117.

MIDWEST FISH AND WILDLIFE CONFERENCE: 4-7 Dec. 1983 at the Sheraton, St. Louis, MO. Contact: Ollie Torgerson, Missouri Dept. of Conservation, P.O. Box 180, Jefferson City, MO 65102.

SECOND IBEROAMERICAN ORNITHOLOGICAL CONGRESS: 4-10 Dec. 1983 at Xalapa, Veracruz, Mexico. Theme: Neotropical ornithology. Request information from: Mario A. Ramos, 2nd Iberoamerican Ornithological Congress, Apartado Postal 388, Xalapa, Veracruz, Mexico. Field trips and tours will be offered both before and after the paper sessions.

WESTERN SOCIETY OF NATURALISTS: 27-30 Dec. 1983 at Simon Fraser Univ. in Burnaby, British Columbia, Canada V5A 1S6. Peter Frankboner, Local Chair, Dept. Biology. Symposia include Arctic Marine Ecology, and Behavioral Interactions amongst Marine Invertebrates.

PACIFIC SEABIRD GROUP: 3-8 Jan. 1984 at the Asilomar Conference Facilities, Asilomar, CA. Coordinator: L. Richard Mewalt, Avian Biology Laboratory, San Jose State Univ., San Jose, CA 95192.

FIRST CONFERENCE ON BIRDS WINTERING IN THE MEDITERRANEAN REGION: 23-25 February 1984 at Aulla, Italy. Emphasis will be on the ecology, ethology, distribution, and migration of birds wintering in this region. For further information and preregistration materials contact Dr. Almo Farina, Museum of Natural History of Lunigiana, Fortezza della Brunella, 54011 Aulla, Italy.

WORLD MARICULTURE SOCIETY: 18-21 March 1984 at the Hyatt Regency in Vancouver, B.C. Special sessions are planned on anadromous fish and aquaculture business. Suggestions for the program: John J. Manzi & T. I. J. Smith, Program Co-chair, Marine Resources Institute, P.O. Box 12559, Charleston, SC 29412. Titles due by 15 Sept. 1983, abstracts by 15 Nov. 1983.

FUTURE ANIMAL BEHAVIOR SOCIETY ANNUAL MEETINGS:

1984 August 13-17, Eastern Washington Univ., Cheney, WA, host: Steven B. Christopher, Department of Psychology

1985 June, North Carolina State University, Raleigh, host: George T. Barthalmus, Department of Zoology. Final arrangements will be announced when available.

SYMPOSIA SCHEDULED FOR THE 1983 DAB-ASZ MEETING

27-30 DECEMBER 1983, PHILADELPHIA

CO-SPONSORED BY ABS AND DAB-ASZ

Paternal Behavior I. -- Thursday Morning, 29 Dec. 1983

Organized by Richard E. Brown, Psychology Dept., Dalhousie Univ., Halifax, N.S., Canada B3H 4J1.

Robert E. BROWN, Introduction. Robert L. SMITH, Paternal behavior in arachnids and insects. Mart R. GROSS, Paternal care in fish. Rae SILVER, Paternal behavior in birds. Don DEWSBURY, Paternal behavior in rodents. James A. MALCOLM, Paternal care in canids; Devra KLEIMAN, Paternal care in new world primates.

Paternal Behavior II. -- Thursday Afternoon, 29 Dec. 1983

Organized by Richard E. Brown. Mart R. Gross, Chair.

David TAUB, Male-infant interactions in old world baboons and macaques: A summary and re-evaluation. Curt BUSSE and T. P. GORDON, Perineal swellings and confidence of paternity in primates. Michael E. LAMB, Paternal behavior in humans. Richard E. BROWN, Hormonal control of paternal behavior. Karl WUENSH, Effects of the presence of fathers on the development and behavior of offspring. Robert L. TRIVERS, The relationship between female choice and the evolution of male parental investment. DISCUSSION.

Ecological Aspects of Social Evolution I. -- Friday Morning, 30 Dec. 1983

Organized by Daniel I. Rubenstein and Richard W. Wrangham, Dept. Biology, Princeton Univ., NJ 08544. Daniel I. Rubenstein, Chair.

D. I. RUBENSTEIN, Introduction. G. WOOLFENDEN and J. FITZPATRICK, The ecology of sex differences in the Florida Scrub Jay. P. MOEHLMAN, Ecology, helping, and social organization in two Jackal species. M. LEIGHTON, Resource competition among sympatric Hornbills: Societal variations on a monogamous theme. M. PETRIE, Strategies of male and female reproduction in the Moorhen. J. BRADBURY and R. M. GIBSON, Male and female nesting strategies on Sage Grouse leks. D. I. RUBENSTEIN, Resource distribution, intruder pressure and sociality in equids.

Ecological Aspects of Social Evolution II. -- Friday Afternoon, 30 Dec. 1983

Organized by Daniel I. Rubenstein and Richard W. Wrangham. Daniel I. Rubenstein, Chair.

C. PACKER and A. PUSEY, Resource competition and the evolution of group living in felids. K. ARMITAGE, Marmot polygyny revisited: Determinants of male and female reproductive strategies. M. GOSLING, Coypu reproductive strategies: Sexual differences in costs and benefits of large body size. S. ANDELMAN, Ecological and social determinants of Cercopithecoid mating patterns. M. FLINN and B. LOW, Resource distribution and mating patterns in human societies. DISCUSSION.

OTHER SCHEDULED EVENTS:

DAB-ASZ Business Meeting -- 4:30 p.m. Tuesday, 27 Dec.
DAB and Division of Ecology Luncheon in honor of Symposia participants -- 12:15 p.m. Wed., 28 Dec.
Contributed Papers in Animal Behavior -- Tues. and Wed., 27-28 Dec.

For meeting information: Mary Wiley, ASZ, Box 2739, California Lutheran College, Thousand Oaks, CA 91360.

ASZ-ABS MEETINGS: These are affiliated meetings in association with DAB-ASZ and are not ABS annual meetings.

1983 Dec. 27-30 at the Franklin Plaza and Philadelphia Centre Hotels in Philadelphia (Robert Searls, Temple Univ. and W. Wayne Moss, Acad. Natural Sci. co-chair).

1984 Dec. 27-30 at the Marriott Hotel and the Holiday Inn in Denver (Dennis Barrett and James Platt, University of Denver chair the local committee).

1985 Dec. 27-30 at the Hyatt Regency and the Hilton in Baltimore (Donald Forester and Philip Creighton, Lowson State University chair the local committee).

MEETINGS -- CALLS FOR PAPERS -- continued

N.A. WILDLIFE AND NATURAL RESOURCES CONFERENCE: 23-28 March 1984 at the Boston Park Plaza Hotel, Boston, MA.

SYMPOSIUM ON CONDITIONED FOOD AVERSION: 9-11 April 1984, Barbazon Plaza Hotel in New York City; sponsored by the New York Academy of Sciences. The meeting will include papers on learning, animal behavior, physiology, toxicology, as well as on the clinical implications of toxiphobia. Information is available from the Conference Department (c/o Mrs. Ellen Marks), The New York Academy of Sciences, 2 East 63rd St., New York, NY 10021.

MIAMI INTERNATIONAL SYMPOSIUM ON THE BIOSPHERE: 16-18 April 1984 at Miami Beach, FL. Sessions include: pollution; deforestation; effects of pesticides and fertilizers; endangered species; acidification; national parks; etc. Contact: Dr. T. Nejat Veziroglu, Director, Clean Energy Research Institute, Univ. of Miami, P.O. Box 248294, Coral Gables, FL 33124.

HUMAN-ALLOANIMAL SOCIAL RELATIONS: Symposium at the 60th annual meeting of the Central States Anthropological Society, 26-28 April 1984 in Lincoln Nebraska. To participate, contact: Robert Mitchell, Dept. Psychology, Clark Univ., Worcester, MA 01610.

MIDWEST REGIONAL ANIMAL BEHAVIOR SOCIETY MEETING:

27-29 April 1984 at Southern Illinois University in Carbondale. Meetings will be held at the SIU Touch of Nature Environmental Center on Little Grassy Lake. Contributed papers, poster papers, and invited paper sessions are planned. For conference information write: Dr. Geo. H. Waring, Dept. Zoology, Southern Illinois Univ., Carbondale, IL 62901.

"Religious Perspectives on the Use of Animals in Science" An international conference will be held in June or August of 1984 in London. Contact: Tom Regan, Dept. Philosophy and Religion, North Carolina State Univ., Box 5688, Raleigh, NC 27650.

MANAGEMENT OF NONGAME WILDLIFE as species and as integral components of ecological communities: 11-12 June 1984 at Univ. of Kentucky, Lexington. Subjects of the Workshop: inventory; management; monitoring methods; and current and future research. Contact William C. McComb, Dept. of Forestry, Univ. of Kentucky, Lexington, KY 40546.

FORAGING BEHAVIOR: 18-20 June 1984 at Brown University in Providence, RI. Sponsored by an informal group composed of the participants in the 1978 ABS Symposium (Kamil and Sargent, 1981). Program Comm. includes Alan C. Kamil, John R. Krebs and H. R. Pulliam. To submit a paper, send a 300-500 word abstract, or for further information write to: Alan C. Kamil, Middlesex House, Univ. of Massachusetts, Amherst, MA 01003. Deadline for submission is 1 Dec. 1983.

COOPER ORNITHOLOGICAL SOCIETY: 19-22 June 1984 at Humboldt State Univ., Arcata, CA. Contact: Barry R. Noon, Dept. Wildlife Management, Humboldt State Univ., Arcata, CA 9551.

AMERICAN SOCIETY OF MAMMALOGISTS: 24-28 June 1984 at Humboldt State Univ., Arcata, CA.

3rd INTERNATIONAL SYMPOSIUM ON AVIAN ENDOCRINOLOGY: 25-28 June 1984 at Rutgers Univ., New Brunswick, NJ. Plenary sessions include Annual cycles and photoperiodism; and Behavior. Contact: Colin G. Scanes, Dept. Animal Sciences, Cook College, Bartlett Hall, New Brunswick, NJ 08903.

VOLUNTARY CONTRIBUTIONS: The Animal Behavior Society welcomes contributions. Members may make the ABS a beneficiary of an estate or name the ABS in a will.

ALLOCATION OF FUNDS TO THE PSYCHOBIOLOGY PROGRAM
OF THE NATIONAL SCIENCE FOUNDATION

We have obtained information concerning funding for the Psychobiology Program that should be a matter of concern for members who rely to any degree on that program for their research support. The FY84 budget proposed by the Reagan Administration for the NSF as a whole is on the order of 18% more than the FY83 budget. An increase of 12.2% has been requested for the Behavioral and Neural Science Division. Of most interest to many of us is the fact that this budget proposes to limit the increase to the Psychobiology Program to 2.7% (from approximately 3.7 million in 1983 to 3.8 million in 1984). It has been estimated that in order to maintain its budgetary status relative to its 1980 level, the Psychobiology Program would need an increase of 48% for FY84.

We call your attention to these facts in the expectation that you will wish to indicate your dismay at the funding level of Psychobiology to the appropriate authorities. We urge you to write to all of the individuals listed below with the request that funding for the Psychobiology Program be increased. In your letters, it would be pertinent to point out the reasons you think increased funding in the areas supported by the Program is essential. Broadly speaking, the Psychobiology Program supports basic research on behavior and its environmental, developmental, hormonal, neural, motivational, and genetic determinants. The basic research supported by the Psychobiology Program not only increases our general understanding of these determinants of behavior, but also provides the bases upon which studies of the neurobiological foundations of behavior become meaningful.

Actual budgetary allocation for FY84 to the Psychobiology Program has been set at \$4 million. There is little likelihood that our concerted action now could result in an immediate response. However, our letters will not be ignored and we need to be concerned about the future.

A copy of your letter should be sent to the following persons:

1. Dr. Charles E. Hess, Dean
College of Agriculture,
University of California, Davis, CA 95616
(Member, National Science Board)
2. Dr. Robert Rabin
Assistant Director of Behavioral and Neural Sciences
National Science Foundation
Washington, D.C. 20550
3. Dr. Richard T. Leuttit
Director of Behavioral and Neural Sciences
National Science Foundation
Washington, D.C. 20550
4. Dr. Fred Stollnitz, Director
Psychobiology Program
National Science Foundation
Washington, D.C. 20550
5. It would be most appropriate for you to send a copy of your letter to your U.S. Representative and Senators.

Report submitted by Ed Banks, Public Affairs Committee.

CERTIFICATION OF "ANIMAL BEHAVIORISTS"

An increasing number of persons advertise themselves as "animal behaviorists," qualified to deal with behavioral problems of pets. The background, knowledge, and methods of some of these "animal behaviorists" are questionable, yet they provide the only contact many of the public have with the concepts and practice of ethology. The Animal Behavior Society needs to consider its response to this potential misrepresentation before the number of "animal behaviorists" becomes large and before the public perception of ethology is seriously compromised.

The issue is education of the public so that persons who wish behavioral advice can make intelligent choices. If we are to act, we would appear to have three options:

1. Licensing. This would require a national effort in which "animal behaviorists" charging for their services would be required by law to pass a licensing examination. Such a procedure would be time consuming and probably beyond the limited resources of the Animal Behavior Society.
2. Certification and registration. Like licensing, certification and registration would require a national effort. However, unlike licensing, certification would not be required, but would provide distinction to certified persons. Persons entering the non-academic marketplace as "animal behaviorists" would apply to a committee of the Animal Behavior Society. The committee would grant or deny certification and regularly publish a directory of certified "animal behaviorists" to be mailed to persons listed in the directory and to interested persons. Certification could be revoked in the event of misconduct. Frequent renewal of certification would provide opportunities for review of certified persons. A similar system is used by the Ecological Society of America, and the North American Society of Fisheries Biologists. As a society, we would be encouraging a standard of knowledge and concern for animals. We would not be legally bound nor would we need state laws to back us up. Our role would be largely educational.
3. Policy statement. We could decide on our view of professional "animal behaviorists" and make our position widely known.

The problem is one of leverage. A policy statement is easily ignored and we will have had no impact on public awareness or the quality of non-academic "animal behaviorists." Even with a widely publicized and effective policy statement, our stand will be forgotten unless the statement is repeatedly publicized or incorporated in a certification or licensing procedure. Licensing would require legal sanctions and enforcement to be effective. Both are beyond the means of the Animal Behavior Society. Thus, we arrive at certification. "Animal behaviorists" would seek the Society's certification as a way of demonstrating their competence to the public and each other. They would advertise the certification themselves thereby publicizing our standards for us and increasing public awareness of ethology as an organized science. Certification would also encourage "animal behaviorists" to interact with the Society in order to obtain and maintain certification. Such interaction could contribute to the further education of non-academic "animal behaviorists" while increasing the diversity of views within the Society. Thus, certification would broaden and strengthen the Society while helping raise the educational standards of practicing "animal behaviorists."

Based on the considerations outlined above, the Policy and Planning Committee recommended certification, in principle, and the Society established an ad hoc committee to examine the certification issue and make a report at the 1984 Annual Meeting in Cheney. Correspondence regarding certification should be sent to the Chairperson of the ad hoc Committee on Certification: Dr. Sarah Lenington, Institute of Animal Behavior, Rutgers University, Newark, NJ 07102.

Report submitted by Edward H. Burt, Jr., Policy and Planning Committee.

1984 ANNUAL MEETING OF THE ANIMAL BEHAVIOR SOCIETY

13-17 AUGUST 1984, EASTERN WASHINGTON UNIVERSITY, CHENEY, WASHINGTON

CALL FOR PAPERS: A transmittal Form and an Abstract Preparation form for contributed papers are included in this Newsletter. There are three types of contributed papers: 20 min (15 min for presentation and 5 min discussion), 5 min papers, and poster papers. ABS members may present or sponsor only one contributed paper at the Annual Meeting. When a member co-authors with a nonmember who is presenting, the member is sponsoring that paper. A member may also show one film and participate in an invited paper session or symposium in addition to giving or sponsoring one contributed paper. Members may present or sponsor a 20 min paper in consecutive years. It is expected that the research reported at the Annual Meeting complies with all applicable laws concerning animal care. See the May 1983 ABS Newsletter for these guidelines. Transmittal and Abstract forms, as well as inquiries concerning the program should be directed to the ABS Program Officer, Lee C. Drickamer, Biology Department, Williams College, Williamstown, MA 01267.

DEADLINE FOR RECEIPT OF ABSTRACTS -- 7 APRIL 1984.

POSTER PAPERS are strongly encouraged. Participation will facilitate more discussion, perusal of data, and one-to-one exchange of ideas. We will be experimenting with a new evening format for poster papers at the Cheney meeting.

FILMS: At the 1983 meeting, the ABS established two new film awards. One award, to be called the Jack Ward Memorial Film Award, will be a cash award for the best film presented by an amateur (a non-commercial film maker) at an ABS Annual Meeting. A second award, to be called the ABS Film Award, will be a non-cash award for the best film presented by a commercial film maker at an ABS Annual Meeting. These awards need not be presented annually. We are looking for new and original films to include in the program. If you have produced a film or have previewed new films you feel should be included in the program, please contact the Film Committee Chairperson, Wayne Aspey, Department of Zoology, Ohio State University, Columbus, OH 43210 (ph. 614-422-9861).

ALLEE AWARD: The W. C. Allee Award will be presented for the outstanding student paper at the 1984 ABS Annual Meeting. Any independent student research which is unpublished at the time of submission for the competition is eligible for this cash award so long as the student has not competed before and has not had the final defense of the doctoral dissertation prior to the preceding ABS Annual Meeting. All papers must be single authored. To compete, send the Transmittal and Abstract Forms to the Program Officer (by 7 April 1984), and four copies of a written version of the paper to: Jeanne Altmann, Department of Biology, University of Chicago, Chicago, IL 60637. The written manuscript must not exceed 7 pages of double-spaced typewritten text; it may include no more than 4 tables and figures and should be completed in the Animal Behaviour format.

DEADLINE FOR RECEIPT OF THE WRITTEN TEXT IS 7 MAY 1984.

INVITED PAPER SESSIONS: The deadline for submission of proposals is 1 January 1984. Contact the Program Officer for information.

REGISTRATION AND HOUSING: Information will appear in the February 1984 ABS Newsletter. For information, contact the local host: Steven B. Christopher, Office of Academic Affairs, Showalter Hall, Eastern Washington University, Cheney, WA 99004.

ANIMAL MISBEHAVIOUR: After an unfortunate lapse of several years, interest has again been expressed in publishing this renowned and important journal. Those who wish to help in this endeavor, or who may have materials they wish to submit for possible inclusion, should contact the Editor, Steve Rebach, Department of Natural Sciences, University of Maryland--Eastern Shore, Princess Anne, MD 21853 (ph. 301-651-3979).

ABSTRACT PREPARATION FORM -- ANNUAL MEETING OF THE ANIMAL BEHAVIOR SOCIETY
13-17 AUGUST 1984, EASTERN WASHINGTON UNIVERSITY, CHENEY, WASHINGTON

Instructions for preparing abstract:

1. Abstracts will be photographed just as you submit them, so please follow the suggested format.
2. Abstracts should be typed in a 3 x 7 inch space, such as provided below. Letters should not touch the lines. Single space all typing, leaving no top or left margins.
3. Use an electric typewriter with a good ribbon; make neat corrections. Elite type (12 pitch) is preferred. Use black ink for symbols not on your typewriter.
4. Your abstract should be organized as follows:
 - a. Title-- use CAP's; check to see that the Transmittal Form and Abstract titles match; when using a Latin name, include the common name also; see example below.
 - b. Authors-- include department and institutional affiliation.
 - c. Specific objectives-- include a brief statement unless clear from the title.
 - d. Methods-- include a brief description, if pertinent.
 - e. Results-- provide a clear, specific summary.
 - f. Conclusions.
 - g. Acknowledgments or References-- if desired.
5. Send the ORIGINAL PLUS ONE COPY of Abstract along with Transmittal Form to the Program Officer.

Example of title lines (please follow this format):

ECOLOGICAL AND BEHAVIORAL DETERMINANTS OF APPARENT MONOGAMY IN EASTERN BLUEBIRDS
(Sialia sialis)
Patricia Adair Gowaty, Dept of Zoology, Clemson University

ABSTRACT TRANSMITTAL FORM -- ANNUAL MEETING OF THE ANIMAL BEHAVIOR SOCIETY

13-17 AUGUST 1984, EASTERN WASHINGTON UNIVERSITY, CHENEY, WASHINGTON

Return to: Lee C. Drickamer, Biology Department, Williams College,
Williamstown, MA 01267 (ph. 413-597-2223)

1. Title of paper: _____

2. Author(s):

First Name	Initial	Last Name	Institutional Affiliation
------------	---------	-----------	---------------------------

3. Mailing address of presenting author:

Telephone numbers:

Office: _____

Home: _____

4. ABS membership of presenting author:

_____ Regular member of ABS _____ Student member of ABS

_____ Nonmember sponsored by _____

_____ Visiting foreign scientist engaged in animal behavior research

5. Category of paper to be presented (ABSTRACT REQUIRED FOR ALL CATEGORIES)

_____ 20 minute _____ Symposium _____ Poster paper

_____ 5 minute _____ Invited session _____ Allee Competition

6. Would you be willing to chair a session? _____ YES _____ NO

7. By submission of this Abstract to ABS, I declare that the research reported herein was conducted in compliance with the ABS Animal Care Guidelines and all laws applicable to my work.

8. Identify your paper according to animal group and principal subject by circling the appropriate categories. (To be used by Program Officer in scheduling papers).

Animal Group:

Humans	Carnivores	Fishes	Insects
Non-human primates	Rodents	Amphibia	Arachnids
Marine mammals	Other mammals	Reptiles	Molluscs
Ungulates	Birds	Crustaceans	Other invertebrates

Subject:

- Applied
- Behavioral ecology
- Biological rhythms
- Communication
- Development
- Genetics
- Learning
- Methodology
- Natural history
- Orientation-Navigation
- Physiology
- Predator-Prey
- Self-maintenance
- Social--
 - Agonistic
 - Altruism-kinship
 - Courtship-mating
 - Dominance
 - Mate choice
 - Intrasexual competition
 - Parent-offspring
 - Play
 - Territoriality

None of the above categories is appropriate. I would categorize my paper as dealing with _____

9. Visual aids. A projector for 2 x 2" slides will be provided. What special equipment would you like to use?

overhead projector _____
16 mm projector _____
other _____

ELECTION OF MEMBERS OF THE UNITED STATES ETHOLOGICAL CONFERENCE COMMITTEE

VITAE OF THE CANDIDATES FOR U.S.E.C.C.

H. JANE BROCKMANN

Birthdate: 25 February 1947
Education: B.S. 1967 Tufts University
 M.S. 1972 University of Wisconsin
 Ph.D. 1976 University of Wisconsin
Present Position: Associate Professor of Zoology,
 University of Florida, Gainesville, FL.
Research Interests: Evolution of behavior,
 specifically evolution of mating and nesting
 behavior in solitary wasps; evolution of
 behavioral diversity and decision making,
 social behavior and sex ratios.

GORDON M. BURGHARDT

Birthdate: 11 October 1941
Education: B.S. 1963 University of Chicago
 Ph.D. 1966 University of Chicago
Present Position: Professor of Psychology and
 Zoology, University of Tennessee, Knoxville.
Research Interests: Chemoreception and ontogeny of
 behavior in reptiles; theoretical and
 historical issues in ethology.

SIDNEY A. GAUTHREAUX, JR.

Birthdate: 18 October 1940
Education: B.S. 1963 Univ. New Orleans
 M.S. 1965 Louisiana State Univ.
 Ph.D. 1968 Louisiana State Univ.
Present Position: Professor of Zoology, Clemson
 University, Clemson, SC.
Research Interests: Radar and direct visual field
 studies of bird orientation and migration;
 hormonal and bioenergetic determinants of
 animal behavior; behavioral aspects of
 competitive coexistence in North American
 birds; behavioral aspects of social dominance;
 habitat selection in birds.

WILLIAM A. MASON

Birthdate: 28 March 1926
Education: B.A. 1950 Stanford University
 M.A. 1952 Stanford University
 Ph.D. 1954 Stanford University
Present Position: Professor of Psychology,
 University of California, California Primate
 Research Center, Davis, CA.
Research Interests: Social development, social
 organization, primates.

C. RICHARD TERMAN

Birthdate: 9 August 1929
Education: A.A. 1950 Spring Arbor Coll., MI
 A.B. 1952 Albion College, Michigan
 M.S. 1954 Michigan State Univ.
 Ph.D. 1959 Michigan State Univ.
Present Position: Professor of Biology, College of
 William and Mary, Williamsburg, VA.
Research Interests: Behavior and population
 dynamics: socio-biological factors influencing
 the growth and physiology of populations;
 behavioral ecology of populations.

JOHN G. VANDENBERGH

Birthdate: 4 May 1935
Education: A.B. 1957 Montclair State Coll. NJ
 M.S. 1959 Ohio University, Athens
 Ph.D. 1962 Penn State University
Present Position: Professor and Head, Department of
 Zoology, North Carolina State University,
 Raleigh, NC.
Research Interests: Pheromones and reproduction in
 rodents, behavioral endocrinology, social
 behavior of rodents and primates.

BALLOT FOR THE ELECTION OF MEMBERS OF THE UNITED STATES ETHOLOGICAL CONFERENCE COMMITTEE

The continuing members of the U.S.E.C.C. are: Stuart Altmann, Don Dewsbury, Lee Drickamer, Stephen Emlen, Devra Kleiman, and Frank McKinney.

The following six persons have been nominated by the ABS Executive Committee and the U.S. Ethological Conference Committee. Three are to be elected for a six-year term each (three International Ethological Conferences). Only U.S. members of ABS may vote (non-U.S. ethologists are represented by delegations to the International Ethological Conference Committee from other countries).

Please vote for THREE of the persons listed below (see vitae above). The three persons receiving the most votes will serve for six years as U.S.E.C.C. members.

H. Jane Brockmann	_____	William A. Mason	_____
Gordon M. Burghardt	_____	C. Richard Terman	_____
Sidney A. Gauthreaux, Jr.	_____	John G. Vandenberg	_____

MAIL YOUR BALLOT (POSTMARKED BEFORE 15 JANUARY 1984) IN AN ENVELOPE BEARING YOUR NAME

TO:

 Lee C. Drickamer
 U.S.E.C.C. Secretary
 Department of Biology
 Williams College
 Williamstown, MA 01267

XVII INTERNATIONAL CONGRESS OF ENTOMOLOGY: 20-26 August 1984, Hamburg. Contact: Thomas Tischler, Zoologisches Institut, Abt. Angewandte Ökologie/Kustenforschung-Biol. der Universität Kiel, Olshausenstr 40/60, D2300 Kiel 1, Federal Republic of Germany.

AMERICAN ORNITHOLOGISTS' UNION: 5-10 August 1984, Univ. Kansas, Lawrence, KS.

WILDLIFE 2000: Modeling Habitat Relationships of Terrestrial Vertebrates. 7-11 Oct. 1984 at Fallen Leaf Lodge, Stanford Univ.'s Sierra Camp near Lake Tahoe. The Symposium will provide scientists and managers an up-to-date synthesis of issues in the development, testing, and application of models that predict responses of wildlife to habitat changes. Abstracts are due 15 Dec. 1983; abstracts for posters due 31 Jan. 1984. Registration will be limited and applications filled in order of receipt. Obtain registration materials, etc. from: Jared Verner, Program Chair, Forestry Sciences Laboratory, 2081 East Sierra Ave., Fresno, CA 93710 (ph. 209-487-5588). Proceedings will be published.

1986 (XIXth) INTERNATIONAL ORNITHOLOGICAL CONGRESS: 22-29 June 1986 in Ottawa. Suggestions for the scientific program may be sent to J. Bruce Falls, Chair Scientific Program Comm., Dept. Zoology, Univ. of Toronto, Toronto, Ontario, Canada M5S 1A1. Suggestions for symposia may include details of subject matter, possible leaders and participants. The possibility of including spoken contributed papers as well as posters is under consideration. To receive further information, contact: The Secretary-General, Dr. Henri Ouellet, XIX Congressus Internationalis Ornithologicus, National Museum of Natural Sciences, National Museums of Canada, Ottawa, Ontario, Canada K1A 0M8.

TO ORGANIZE SYMPOSIA FOR ABS AND ASZ MEETINGS:

For the 1985 ABS meeting at North Carolina State University, Raleigh (June) or the 1984 ASZ meeting in Denver (December), contact the ABS Program Officer, Lee C. Drickamer, Dept. of Biology, Williams College, Williamstown, MA 01267.

The deadline for approval of proposals for invited paper sessions and symposia for the 1984 ABS meeting is 1 January 1983.

CELEBRATION OF ABS 20th ANNIVERSARY

A session celebrating the 20th Anniversary of the Animal Behavior Society and honoring the founders will be held at the 1984 Annual Meeting of ABS at Eastern Washington University at Cheney, Washington (13-17 August). The following presentations are planned for the Anniversary Session:

- Edwin M. Banks: W. C. Allee and the "Chicago" school of Animal Behavior.
- Nicholas F. Collias: The role of American zoologists and ethologists in the development of ethology during the three decades preceding the formation of the ABS.
- Martin W. Schein: The roots of the ABS.
- John Paul Scott: The origin of the ABS as I saw it.
- Jerry Hirsch: The early years of the ABS.
- David F. Davis: The dual origin of the "Animal Behaviour" journal.

PHOTOGRAPHS ARE NEEDED

A poster session is planned for the 1984 Annual Meeting at Eastern Washington University in Cheney to honor ABS founders and to celebrate the 20th Anniversary of the Society. Photographs of ABS Founders, Fellows, early meetings, etc. are needed. Please contact Martin W. Schein, ABS Historian (Department of Biology, University of West Virginia, Morgantown, WV 26506) to make a donation or arrange to have duplicates made of photos or slides you can contribute to this exhibit.

The American Ornithologists' Union RESEARCH AWARDS for 1984: The Josselyn Van Tyne and Alexander Wetmore Memorial Funds are available to students and to others without recourse to regular funding. The Van Tyne Awards are for research on any aspect of avian biology; Wetmore Awards are limited to research on taxonomy and systematics of birds and secondarily on neotropical birds. The total in each fund available for annual distribution is usually around \$2,500; multiple awards from each fund are granted annually. Application forms and guidelines for applications may be obtained from Dr. Patricia Adair Gowaty, Chair, AOU Research Awards Committee, Section of Neurobiology and Behavior, Seeley G. Mudd Hall, Cornell University, Ithaca, NY 14853. Applications must be postmarked by 17 February 1984.

FRANK M. CHAPMAN GRANTS: Grants-in-aid of ornithological research and post-doctoral fellowships. There is no restriction on who may apply, but the Committee particularly welcomes and favors applications from graduate students; projects in game management and the medical sciences are seldom funded. Applications should be submitted not later than 15 January 1984; there will be no other 1984 submission date. Applicants will be notified of the results in early April 1984. Forms may be obtained from The Frank M. Chapman Memorial Fund Committee, The American Museum of Natural History, Central Park West at 79th St., New York, NY 10024.

RESEARCH ASSISTANT: A position is available for a research assistant to conduct behavioral observations of bonnet macaques (*Macaca radiata*) at the California Primate Research Center, Univ. of Calif., Davis as part of a three-year study of factors influencing maternal investment strategies, differential reproductive success among females, and the evolution of skewed sex ratios in this species. The position is funded at 50-60% time, and the salary ranges from \$10,000 to \$12,000, depending upon experience. Knowledge of behavioral observation techniques, competence in use of microcomputers, and experience in observing primates is preferred, but not mandatory. A minimum 12-month commitment will be required. Please submit a vitae, two academic references, and a statement describing reasons for wishing to participate in the project to Dr. Joan Silk, 908 Monmouth Ave., Durham, NC 27701 by 10 December 1983.

THE NORTH AMERICAN BLUEBIRD SOCIETY: Three variable grants totalling \$3000 are available. Student Research grant-- to full-time college or university students for a project focused on North American cavity-nesting species. Bluebird Research Grant-- to student, professional or individual workers for a project focused on any species of Bluebird (*Sialia*). General Research Grant-- to student, professional or individual researchers for a project on a North American cavity-nesting species. Forms available from: Theodore W. Gutzke, Research Comm. Chm., P.O. Box 66, Upham, ND 58789. Application must be received by 31 January 1984; decisions will be announced by 15 March 1984.

AVIAN AND ODNATE BEHAVIORAL ECOLOGY -- FIELD ASSISTANTS NEEDED for projects involving the behavioral ecology of cooperatively-breeding Acorn Woodpeckers, colonial Yellow-billed Magpies, and lekking White-tail Skimmer Dragonflies at Hastings Reservation, Monterey County, CA. Positions available for March-July (1 position, woodpeckers); April-July (1 or 2 positions, woodpeckers and/or magpies); and mid June-early August (2 positions, dragonflies). Housing and small stipend provided. Contact Walt Koenig, Hastings Reservation, University of California, Star Route Box 80, Carmel Valley, CA 93924 (ph. 408-659-2664 or 659-2684).

PRE-DOCTORAL FELLOWSHIPS: The Primate Foundation of Arizona, in association with Ariz. State Univ., has pre-doctoral fellowships for the study of chimpanzee behavior. Two annual fellowships are offered for 12 months; the award amount is \$6,000. Deadlines for applications: 30 April 1984 (to begin 1 Aug.) and 30 Sept. 1984 (to begin 1 Jan. 1985). Contact: Jo Fritz, Primate Foundation of America, P.O. Box 86, Tempe, AZ 85281.

PUBLICATIONS AVAILABLE

BACK ISSUES OF THE AMERICAN ZOOLOGIST: Available from the American Society of Zoologists, Box 2739 California Lutheran College, Thousand Oaks, CA 91360 for \$14.00 per issue including postage and handling. Add \$4.00 per issue for postage outside U.S.

HORMONES AND BEHAVIOR IN HIGHER VERTEBRATES: Edited by J. Balthazart, E. Prove, and R. Gilles. Topics include radioimmunoassay, interaction of steroids, neurotransmitters, and sexual differentiation. \$55.00, 504 pp., 1983. From: Springer-Verlag, 175 5th Ave., New York, NY 10010.

PUBLICATIONS OF NSF: For information on the availability of reports in specific scientific and technical areas, contact: Communications Program/OPRM, National Science Foundation, Washington, D.C. 20550.

ECOLOGY USA: A biweekly newsletter with coverage of ecology-related news in research, legislation, litigation, and technology. \$42.00 per year for individuals and schools. Ecology USA, 951 Pershing Drive, Silver Spring, MD 20910.

"Scientific Perspectives on Animal Welfare," the first book-length publication of the Scientists Center for Animal Welfare, edited by W. Jean Dodds and F. Barbara Orlans, is now available. These are the proceedings of the First Conference on Scientific Perspectives in Animal Welfare, held 11-13 Nov. 1981, in Chevy Chase, MD. The book deals with recommendations for action by the scientific community for improving the humanness of animal experimentation. Order from Academic Press, P.O. Box 733, New York, NY 10113. (1983, 144 pp., \$14.50)

LAB MANUAL: A new printing of "Laboratory Exercises in Animal Behavior: An Ecological Approach" by Patricia DeCoursey is now available. Order from The University of South Carolina Bookstore, Columbia, SC 29208 (\$7.50 ea.).

1983 "CONSERVATION DIRECTORY" lists addresses and phone numbers of 12,000 individuals and 1800 national and international organizations involved in natural resource use and management, including federal and state agencies. Send check for \$9.00 + 1.55 shipping to National Wildlife Federation, 1412 16th St. NW, Washington, D.C. 20036.

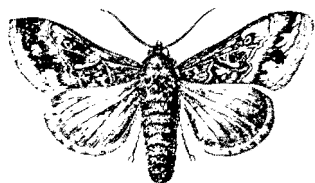
ABS members may request a copy of the ABS Constitution and Bylaws and/or current ABS Policy from the Secretary.

ANIMAL CARE GUIDELINES: "Guidelines for the Use of Animals in Research," ANIMAL BEHAVIOUR (1981, Vol. 29: 1-2). Reprints available from: Sidney A. Gauthreaux, Jr., ABS Secretary, Dept. of Zoology, Clemson Univ., Clemson, SC 29631 (send a self-addressed envelope).

ABS NEEDS MEMBERS: ENCOURAGE YOUR COLLEAGUES AND STUDENTS TO JOIN -- AND DON'T NEGLECT TO RENEW.

Request membership forms from H. Jane Brockmann, ABS Treasurer, Department of Zoology, Bartram Hall, University of Florida, Gainesville, FL 32611.

NEWSLETTER ANNOUNCEMENTS WELCOME: Items of interest to ABS members -- news of positions, meetings, publications, people, etc. Send items to Anna E. Ross, ABS NEWSLETTER, Department of Zoology, Clemson University, Clemson, SC 29631.



MISCELLANY

HUMAN DISPERSAL STUDY NEEDS REUNION BOOKLETS: High school ten-year (or comparable) reunion booklets are needed for a study of human dispersal. Must contain addresses of all locatable people, regardless of whether or not they attended the reunion. Profuse acknowledgment, guaranteed safe return, and reimbursement of postage provided. Contact: Walt Koenig, Hastings Reservation, University of California, Star Route Box 80, Carmel Valley, CA 93924 (ph. 408-659-2664).

ITEMS FOR SALE: (1) 20 rolls of Kodak high speed infrared film 2481; 16 mm double-perforated, 100'/roll. This film is very difficult to obtain from Eastman Kodak. Asking \$8.00/roll. (2) Used Kay Misselyzer model #675. In working condition, especially good for making sonograms of bird vocalizations. Asking \$500. Contact: Dr. E. M. Banks, Dept. Ecology, Ethology and Evolution, Univ. Illinois, Urbana, IL 61801 (ph. 217-333-4884).

JOURNAL OF ETHOLOGY (ISSN#) is published twice a year by the Japan Ethological Society. Publication in the journal is open to any person, regardless of membership status. Any person interested in ethology may become a member upon payment of dues. Dues are: regular members, ¥5,000/year; student/unemployed members, ¥3,000/year. Add ¥3,000 for non-Japanese addresses. Members of all classes receive JOURNAL OF ETHOLOGY. Send payment for dues or requests for information concerning subscription or available back issues to M. Imafuku, Secretary, Dept. of Zoology, Kyoto Univ., Sakyo-ku, Kyoto 606, Japan. Manuscripts for publication should be sent to T. Hidaka, Editor, Dept. Zoology, Kyoto Univ., Sakyo-ku, Kyoto 606, Japan.

A CELEBRATION OF BIRDS--LOUIS ACASSIZ FUERTES AND HIS ART This traveling exhibit of more than 100 works covering Fuertes' entire career will be at the Dallas Museum of Natural History, 31 March-27 May 1984, and the Columbus, GA, Museum of Arts and Science, 15 Sept.-11 Nov. 1984.

STATEMENT OF CASH RECEIPTS AND DISBURSEMENTS:
ANIMAL BEHAVIOR SOCIETY
July 1, 1982 - June 30, 1983

BEGINNING CASH, JULY 1, 1982		
TOTAL CASH, July 1, 1981		\$ 94,724.
CASH RECEIPTS		
Membership Dues - Regular (@\$27.00)	\$	38,905.
Student and Emeritus (@\$17.00)		10,751.
Spouse (@\$9.00)		360.
Journal subscribers (ASZ, @\$24.00)		1,272.
Donations		48.
Mailing labels		1,450.
Royalties		485.
Interest		10,072.
From ASAB for editorial office		1,000.
From previous editor		21.
TOTAL REVENUE RECEIVED	\$	64,364.
TOTAL FUNDS AVAILABLE	\$	159,088.
CASH DISBURSEMENTS		
Animal Behaviour (2083 copies @\$13.00) ...	\$	27,079.
American Institute of Biological Sciences (membership dues)		962.
President		212.
Second President-Elect (Allee Award)		350.
Secretary		3,000.
Treasurer		4,470.
Editor		10,280.
Past Editor		2,910.
Program Officer (Aug. 1982 and June 1983 Annual Meetings)		2,276.
TOTAL EXPENDITURES:	\$	51,539.
ENDING BALANCE		
First City Bank, Gainesville, FL	\$	31,728.
United Federal Savings, University Park, PA		20,000.
First Florida Savings and Loan, Gainesville, FL		55,821.
TOTAL ENDING BALANCE, 30 JUNE 1983	\$	107,549.

COMPUTER WORKSHOP

The Education Committee is organizing a Workshop titled "The Use of Computers in Teaching Animal Behavior" for the 1984 Annual ABS Meeting in Cheney, WA. If you would be interested in participating, or know of anyone who might be interested, please contact

Christine Boake
Department of Biology
Whitman Laboratory
The University of Chicago
915 East 57th Street
Chicago, IL 60637
(ph. 312-962-9638)

ABS COMMITTEE MEMBERS NEEDED

Are you interested in serving on a Committee of the Animal Behavior Society? The committees which have vacancies in 1983 and 1984 are: Education, Animal Care, Policy, Membership, Film, Organization and Bylaws, and the Public Affairs Committee.

Please write a letter specifying your Committee interests to Devra G. Kleiman, ABS President, Dept. Zoological Research, National Zoological Park, Washington, D.C. 20008. Your letter will be kept on file so that you can be considered when there is a position to be filled on the Committee you wish to join. Of course, your suggestions on Committee matters are always welcomed by the Committee Chairpersons and you may correspond directly with them as well.

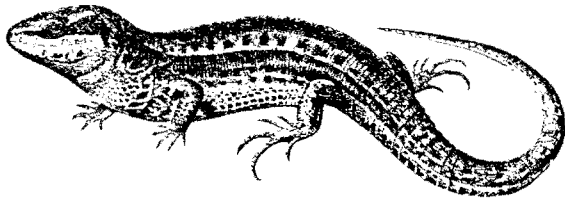
VOLUNTARY CONTRIBUTIONS: The Animal Behavior Society welcomes contributions. Members may make the ABS a beneficiary of an estate or name the ABS in a will.

CHECK TO BE SURE YOUR NEWSLETTER MAILING LABEL IS CORRECT
Send address corrections and/or changes for NEWSLETTER and ANIMAL BEHAVIOUR to the TREASURER: H. Jane Brockmann

Do animals have color preferences? Lynn Wilson of an Architects/Planners Group (1295 Bellany Road North, Scarborough, Ontario M1H 1H9, Canada) requests information. The group is interested in developing animal quarters, kennels, clinics, etc. with the animals' color preferences in mind.

AMERICAN SOCIETY OF VETERINARIAN ETHOLOGY: a small group of veterinarians with an interest in animal behavior. For information, contact: Dr. Victoria L. Voith, President, American Veterinary Ethology Society, The School of Veterinary Medicine, 3800 Spruce Street, University of Pennsylvania, Philadelphia, PA 19104.

The National Association of Biology Teachers' Committee for Animal Behavior publishes a newsletter for high school, community college and university animal behavior teachers. Short articles describing field or lab studies for high school students and art work depicting animal behavior is requested. Send materials to: Laine Gurley, 2731 N. Arlington Heights Rd., Arlington Heights, IL 60004. Annual membership in CABT and a subscription to the CABT newsletter (three 8 page issues/yr.) is \$2.50.



** Dues, All Changes of Address, Membership Application, Membership Lists:

H. Jane Brockmann, Treasurer
Dept. of Zoology, Bartram Hall
Univ. of Florida, Gainesville, FL 32611.

** ANIMAL BEHAVIOUR: Manuscripts, Reviews, Editorial Policy: Patrick Colgan, Editor
Dept. of Biology, Queens Univ.
Kingston Ontario K7L 3N6 Canada.

** ANIMAL BEHAVIOUR: Missing Issues, Duplicate or Defective Issues, Back Issues:

Journal Subscription Dept. (Attn. E. Lowe)
Bailliere Tindall, 8 Trident Way, Brent Rd.
Southall, Middlesex, England.

1983 ROSTER OF ABS OFFICERS AND COMMITTEE CHAIRPERSONS

PRESIDENT: Devra G. Kleiman, Dept. Zoological Research, National Zoological Park, Washington, D.C. 20008
1st PRESIDENT-ELECT: Colin G. Beer, Inst. Animal Behav., Rutgers University, Newark, NJ 07102
2nd PRESIDENT-ELECT: Jeanne Altmann, Dept. Biology, University of Chicago, Chicago, IL 60637
PAST-PRESIDENT: John G. Vandenberg, Dept. Zoology, North Carolina State University, Raleigh, NC 27650
SECRETARY: Sidney A. Gauthreaux, Jr., Dept. Zoology, Clemson Univ., Clemson, SC 29631
TREASURER: H. Jane Brockmann, Dept. Zoology, Bartram Hall, Univ., Florida, Gainesville, FL 32611
PROGRAM OFFICER: Lee C. Drickamer, Dept. Biology, Williams College, Williamstown, MA 01267
PARLIAMENTARIAN: Edward H. Burt, Jr., Dept. Zoology, Ohio Wesleyan Univ., Delaware, OH 43015
MEMBER-AT-LARGE: Elizabeth Adkins Regan, Dept. Psychology, Cornell Univ., Ithaca, NY 14853
MEMBER-AT-LARGE: Sarah Lenington, Inst. Animal Behavior, Rutgers Univ., Newark, NJ 07102
MEMBER-AT-LARGE: Philip N. Lehner, Dept. Zool./Entomol., Colorado State Univ., Fort Collins, CO 80523
EDITOR, ANIMAL BEHAVIOUR: Patrick Colgan, Dept. Biology, Queens Univ., Kingston, Ontario K7L 3N6 Canada
CHAIR, EDUCATION C.: Robert W. Matthews, Dept. Entomology, Univ. Georgia, Athens, GA 30602
CHAIR, MEMBERSHIP C.: Miles Keenleyside, Dept. Zoology, Univ. Western Ontario, London, Ontario N6A 5B6 Canada
CHAIR, ANIM. CARE C.: Zuleyma T. Halpin, Dept. Biology, Univ. Missouri, St. Louis, MO 63121
CHAIR, PUBLIC AFFAIRS C.: Edwin M. Banks, Dept. Ecol. Ethol. & Evol., Univ. Illinois, Urbana, IL 61801
CHAIR, POLICY C.: David L. G. Noakes, Dept. Zoology, Univ. Guelph, Guelph, Ontario, Canada N1G 2W1
CHAIR, FILM C.: Wayne P. Aspey, Dept. Zoology, Ohio State University, Columbus, OH 43210
CHAIR, ORG. & BYLAWS C.: (Chair not appointed)
AIBS REPRESENTATIVE: Edward M. Barrows, Dept. Biology, Georgetown Univ., Washington, D.C. 20057
SECTION C-AAAS REPRESENTATIVE: Jerry Hirsch, Dept. Psychology, Univ., Illinois, Champaign, IL 61820
ABS HISTORIAN: Martin W. Schein, Dept. Biology, Univ. West Virginia, Morgantown, WV 26506

FUTURE ANIMAL BEHAVIOR SOCIETY ANNUAL MEETINGS:

1984 August 13-17, Eastern Washington Univ., Cheney, WA,
Host: Steven B. Christopher, Department of Psychology
1985 June, North Carolina State University, Raleigh,
Host: George T. Barthalmus, Department of Zoology.
Final arrangements will be announced when available.

DEADLINES FOR NEWSLETTERS:

Animal Behavior Society: 1 January 1984 for February ABS NEWSLETTER.
ASZ Division of Animal Behavior: 1 April 1984 for Spring (May) DAB Newsletter.
Send materials to: Anna E. Ross (Editor of the DAB-ASZ and ABS NEWSLETTERS), Department of Zoology, Clemson University, Clemson, SC 29631 (phone: 803-656-2328).

LABORATORY EXERCISES IN ANIMAL BEHAVIOR

Do you have a favorite lab in Animal Behavior that you would like to share with colleagues in the Animal Behavior Society? If so, please participate in a clearing house for Animal Behavior Lab Experiments by completing the following form, folding appropriately, and returning it to Wayne P. Aspey, Chairperson, ABS Film Committee.

When 10 replies have been obtained, a complete list will be published in the ABS NEWSLETTER; additional copies will also be available from Wayne Aspey. If you decide to participate and an individual requests a lab from you, please have the exercise written in ready-to-use form similar to those in the Price & Stokes' manual ANIMAL BEHAVIOR IN THE LABORATORY AND FIELD, including a complete, detailed list of directions, materials, and special considerations (i.e., animal care, maintenance, special solutions).

Your cooperation will be appreciated by all those who need new animal behavior labs.

Title: _____

Level of presentation: underclassmen upperclassmen graduate

Length of lab: _____

Experimental subject(s):
(Common and Genus species names) _____

Description of lab objectives (up to 50 words, continue on reverse if necessary):

Special equipment, skills, or habitat required:

Address inquiries to:

Name: _____

Department: _____

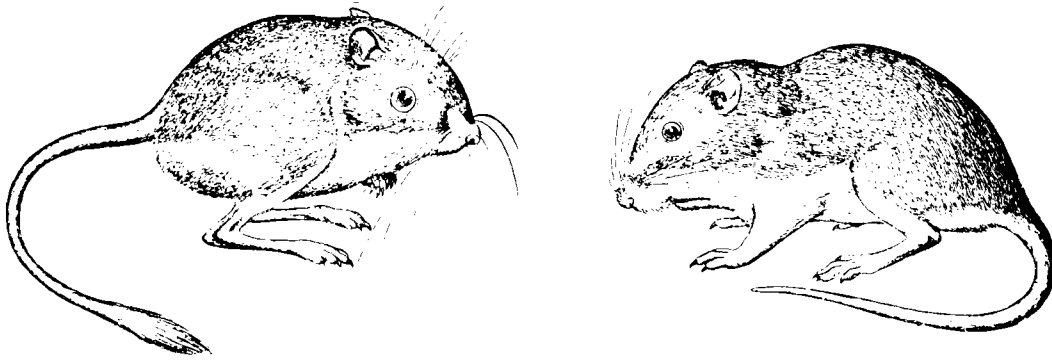
Institution: _____

Street: _____

City/State/Zip: _____

Lab Description (con't):

Please fold here so address shows



Please fold here so address shows

Apply
20¢
Postage
Here

Wayne P. Aspey, Chairperson, Film Committee
ANIMAL BEHAVIOR SOCIETY
Department of Zoology & General Biology Section
112 Rightmire Hall
1060 Carmack Rd.
Columbus, OH 43210

Tape closed (do not staple)

CONTRIBUTED LABORATORY EXERCISES IN ANIMAL BEHAVIOR

Title: HORSE BEHAVIOR: DOMINANCE HIERARCHIES, PLAY AND FLEHMEN

Level: underclassmen, upperclassmen, and graduate students

Length: 2½ hours

Subject(s): horse, Equus caballus

Description: A dominance hierarchy is determined using all possible pairs of 4-6 horses at one food source. Focal samples of foals and mares are made to observe maternal and play behavior. Flehmen number and duration are recorded when urine (estrous, pregnant and male) is presented to stallions to determine discriminatory ability.

Requirements: stopwatch, horse farm (spring or early fall is the best time)

Submitted by: Katherine A. Houpt, Physiology, NYS College of Veterinary Medicine
Cornell University, Ithaca, NY 14853

Title: THE EFFECT OF TERRITORY ON DOMINANCE

Level: underclassmen, upperclassmen

Length: 2-3 hours in class, some time out of class

Subject(s): field mice, Peromyscus

Description: Run encounters between 2 male Peromyscus in a neutral cage to determine dominance. Dominance should be expressed within 5 minutes and a hierarchy for several males can be developed within 2 hours. Then place a slightly dominant male (as determined by position in the hierarchy) in a subordinate's cage and see if territory overrides dominance status. The same encounters can be run between an extremely dominant male and the subordinate. If desired, these two conditions can be expressed as null hypotheses and tested statistically.

Requirements: neutral cage, stopwatch

Submitted by: Patricia A. Schoknecht, Biology, Virginia Polytechnic Institute and State University, Blacksburg, VA 24061

Title: COMPARISON AMONG DATA COLLECTION METHODS IN BEHAVIOR

Level: upperclassmen

Length: 3-6 hours (choose either one can be on 2 days)

Subject(s): paper wasps, Polistes spp.

Description: The purpose of this lab is to demonstrate that the technique of data collection influences the information obtained. Therefore collection techniques must be tailored to the hypothesis being tested. Three types of behavioral observations are made for 1 or 2 hours each: (1) ad libitum, (2) focal animal and (3) scanning (see Altmann 1974). These observations are made on a nest of marked Polistes in the field. Students decide what behaviors to record and analyze differences in methods and discuss which technique is best for what kinds of questions.

Requirements: enamel and a pin stuck in a pencil eraser to mark wasps, paper and pen or tape recorder to record behaviors, wasp nests (look on eaves May - Sept. in North, Mar.-Sept. in South)

Submitted by: Joan E. Strassmann, Biology, Rice University, Houston, TX 77251

APPLICATION FOR MEMBERSHIP: ANIMAL BEHAVIOR SOCIETY

Name in full _____ Degrees _____

Mailing address _____

Institution _____ Position _____

- _____ Member - \$27.00 (U.S.) Receive ANIMAL BEHAVIOUR and NEWSLETTER.
- _____ Student Member - \$17.00 (U.S.) Receive ANIMAL BEHAVIOUR and NEWSLETTER.
- _____ Spouse Member - \$9.00 (U.S.) Receive NEWSLETTER only.
- _____ Non-Member Subscription (Library, etc.) - \$7.00 (U.S.) Receive NEWSLETTER only.

Membership for calendar year 19____. Date and place of birth _____

Specific area of interest _____

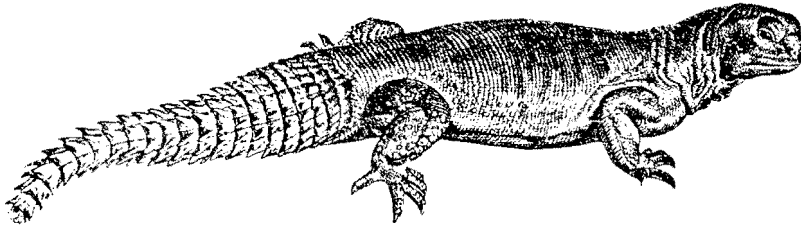
Member of these societies: _____ Ecol. Soc. Amer.; _____ Amer. Soc. Zool.; _____ A.I.B.S.;
_____ Amer. Psych. Assoc.; _____ Wildlife Soc.; _____ Other(s) _____

My student membership application is endorsed by: (Dept. Head, ABS Member, ABS Fellow)
(name) _____ (signature) _____

This application form should be sent with remittance (make checks payable to ANIMAL BEHAVIOR SOCIETY) to:

H. Jane Brockmann, ABS Treasurer
Dept. of Zoology, Bartram Hall
University of Florida
Gainesville, FL 32611

PLEASE COPY AND DISTRIBUTE



SIDNEY A. GAUTHREAUX, JR., Secretary
Animal Behavior Society
Department of Zoology
Clemson University
Clemson, South Carolina 29631

Non-Profit Org.
BULK RATE
U. S. Postage
PAID
Clemson, SC
Permit No. 23