

# NEWSLETTER

## Animal Behavior Society

Vol. 28, No. 1

February 1983

A quarterly publication

SIDNEY A. GAUTHREAU, JR., Secretary  
Dept. Zoology, Clemson University  
Clemson, South Carolina 29631

Section (Division) Animal Behavior and Sociobiology  
American Society of Zoologists  
Ecological Society of America

### ABS ELECTION RESULTS

New officers assume office 25 June 1983. 300 ballots were cast (this represents 14.6% of the membership, compared to 21% voting in 1981, 27% in 1980, and 24% in 1979). Officers of the Animal Behavior Society also serve as officers of the Division of Animal Behavior of the American Society of Zoologists.

SECOND PRESIDENT-ELECT: Jeanne Altmann  
Dept. of Biology, Univ. of Chicago

PROGRAM OFFICER: Lee C. Drickamer  
Inst. for Geophysics, Univ. Texas, Austin

PARLIAMENTARIAN: Edward H. Burt, Jr.  
Dept. of Zoology, Ohio Wesleyan Univ.

MEMBER-AT-LARGE: Philip N. Lehner  
Dept. of Zoology, Colorado State Univ.

CONSTITUTIONAL CHANGE: PASSED. Members of committees may be appointed by the President with the consent of the Chairperson of the Committee.

### MEETINGS -- CALLS FOR PAPERS

HAWK MIGRATION CONFERENCE IV: 24-27 March 1983 at the Rochester Marriott (Airport), Rochester, NY. Theme: "Hawkwatching beyond the numbers." Contact: Laura Moon, 25 Edgewater Lane, Rochester, NY 14617. (Sponsored by the Hawk Migration Association of North America.)

WILDLIFE REHABILITATION SYMPOSIUM: 23-27 March 1983, Sheraton-Naperville Hotel, Naperville, IL. Write: Symposium '83, Treehouse Wildlife Center, RR #1, Box 125E, Brighton, IL 62012.

NORTHWEST SCIENTIFIC ASSOCIATION: 56th Annual Conference 24-26 March 1983 at The Evergreen State College, Olympia, WA. Papers requested in Evol. Biol., Forestry, Sci. Ed., Soc. Sci., and Zool. Contact: Alfred M. Wiedemann, Lab 11, The Evergreen State College, Olympia, WA 98505.

### ANIMAL BEHAVIOR SOCIETY MIDWEST REGIONAL MEETING:

8-10 April 1983 at the Univ. Missouri-St. Louis and St. Louis Univ. Invited paper sessions: (1) Recent developments in bird song study, (2) Primate social organization, (3) insect behavior and neurophysiology, (4) mating systems and sexual selection, and (5) ethology of infants and children. Also: contributed paper and poster paper sessions. Keynote speaker: Jeanne Altmann.

Contact: Zuleyma T. Halpin, 1983 Midwest ABS Meeting, Dept. of Biology, Univ. of Missouri-St. Louis, 8001 Natural Bridge Rd., St. Louis, MO 6312.

EVOLUTION OF BIRDS: PROCESSES AND PRODUCTS: A symposium sponsored by the Zoology Dept. of Ohio Wesleyan Univ., 15 April 1983. Speakers include: Alan Feduccia, Richard F. Johnston, George F. Barrowclough, William R. Dawson, and Glen E. Woolfenden. Overnight accommodations can be arranged. For information contact Edward H. Burt, Jr., Dept. of Zoology, Ohio Wesleyan Univ., Delaware, OH 43015 (phone 614-369-4431, extension 400).

NEWSLETTER ANNOUNCEMENTS WELCOME: Items of interest to ABS members -- news of positions, meetings, publications, people, etc. Send items to Anna E. Ross, ABS NEWSLETTER.

### ANIMAL BEHAVIOR SOCIETY 1983 ANNUAL MEETING

19-24 June 1983, Bucknell University, Lewisburg, PA.

ABS members received forms for submitting contributed papers, and forms to be returned for travel, housing, food service, social events, child care, and tours in a separate mailing. If you need forms, contact Douglas K. Candland, Animal Behavior Program, Bucknell University, Lewisburg, PA 17837 (or phone Cheryl Kyes at 717-524-1431 for information). ADVANCE REGISTRATION FEES, HOUSING AND FOOD SERVICE REQUESTS MUST BE RECEIVED BY 1 MAY 1983.

### FINAL CALL FOR PAPERS FOR THE 1983 ANNUAL ABS MEETING:

You are invited to submit a 20 min., a 5 min., or a poster paper for the 1983 Annual Meeting. Send a Transmittal Form and two copies of the abstract to Terry Christenson, ABS Program Officer, Dept. of Psychology, Tulane University, New Orleans, LA 70118. Forms and instructions for the preparation of abstracts were published in the November 1982 ABS NEWSLETTER and are included in the booklet of meeting information mailed to ABS members from Bucknell in December 1982. Poster Session papers are strongly encouraged.

### ABSTRACTS MUST BE RECEIVED BY 7 MARCH 1983.

ALLEE AWARD: Students interested in competing for the W. C. Allee Award for the outstanding student paper at the 1983 ABS Annual Meeting must send abstracts to the Program Officer by 7 March 1983 and 4 copies of a written version of the paper (not to exceed 7 pages of double-spaced typewritten text in the Animal Behaviour format) to: Colin Beer, Institute of Animal Behavior, 101 Warren St., Rutgers University, Newark, NJ 07102.

DEADLINE FOR THE WRITTEN TEXT IS 7 APRIL 1983.

FILMS: The Film Committee needs your help in continuing to offer enjoyable and informative sessions. You can help in three ways. 1) We are looking for original films to be included in the program. If you have original footage, please request a transmittal form from Wayne Aspey of the Film Committee. 2) If you have previewed new films that you think should be included in the program, please send titles and distributors names. 3) We would like to hear from those who have produced a film and are interested in helping with a presentation on film production. Contact Wayne Aspey, Chairperson, ABS Film Committee, Department of Zoology, Ohio State Univ., Columbus, OH 43210.

ASZ-ABS MEETINGS: These are affiliated meetings in association with DAB-ASZ and are not ABS annual meetings.

1983 Dec. 27-30 at the Franklin Plaza and Philadelphia Centre Hotels in Philadelphia (Robert Searls, Temple Univ. and W. Wayne Moss, Acad. Natural Sci. co-chair).

1984 Dec. 27-30 at the Marriott Hotel and the Holiday Inn in Denver (Dennis Barrett and James Platt, University of Denver chair the local committee).

1985 Dec. 27-30 at the Hyatt Regency and the Hilton in Baltimore (Donald Forester and Philip Creighton, Towson State University chair the local committee).

ABS NEEDS MEMBERS-- PASS ON THE MEMBERSHIP APPLICATION.

ETHOLOGY AND BEHAVIORAL ECOLOGY OF FISHES: 9-12 May 1983 at Illinois State Univ., Normal, IL. Fourth Biennial Conference. Symposia planned: Physiological correlates of behavior and Community structure of fishes. Contact: Jack Ward, Dept. of Biological Sciences, ISU, Normal, IL 61761 for call for papers, registration and housing info.

ENDOCRINE SOCIETY: 12th Annual Hormonal Assay Workshop, 20-25 March 1983, Boston Park Plaza Hotel, Boston, MA; 65th Annual Meeting, 8-10 June 1983, Convention Center, San Antonio, TX; 35th Annual Postgraduate Assembly, 24-28 October 1983, Boston Park Plaza, Boston, MA.

Contact: Nettie Karpin, Office of the Secretary, 9650 Rockville Pike, Bethesda, MD 20814 (301-530-9660).

COOPER ORNITHOLOGICAL SOCIETY: 19-22 May at the Univ. of New Mexico, Albuquerque. Contact: J. David Lignon, Dept. Biology, Univ. New Mexico, Albuquerque, NM 87131.

WILSON ORNITHOLOGICAL SOCIETY: The 64th annual meeting will be 2-5 June 1983 at the Univ. of Wisconsin, Green Bay. To organize mini-symposia or be on the scientific program, contact Clait E. Braun, Wildlife Research Center, 317 West Prospect, Fort Collins, CO 80526.

SNAG HABITAT MANAGEMENT SYMPOSIUM: 7-9 June 1983 in Flagstaff, AZ. Hosted by the Arizona chapter of the Wildlife Society, the meeting will concentrate on snag habitat management and wildlife species dependent on snag habitat. Contact: Jerry W. Davis, Tonto National Forest, P.O. Box 29070, Phoenix, AZ (ph. 602-261-4240).

HUMAN/ANIMAL BOND: June 1983 at two locations: Univ. Minnesota, Minneapolis-St. Paul, June 13-14, and Univ. California, Irvine, June 17-18. Submissions of papers and poster presentations on animal behavior and animal/human relationships as they affect health and quality of life (1) across the life span from child development to family interactions to aiding the elderly; and (2) for the handicapped, people in nursing homes, prisons, etc. are welcome. There will be special sessions at the Univ. of MN on health, behavior, and productivity of farm animals. DEADLINE FOR SUBMISSION OF ABSTRACTS IS 28 FEB. 1983. To submit abstracts contact: R. K. Anderson, CENSHARE, 1-117 Health Sciences Unit A, 420 Delaware St. S.E., Univ. Minnesota, Minneapolis, MN 55455 (612-373-8032), or Assist. Dir. UCI Center for Health Ed., 2801 Atlantic Ave., P.O. Box 1428, Long Beach, CA 90801 (213-595-3811). For registration information: James O. Hanson, Dir. Continuing Ed., Coll. Veterinary Med., Univ. Minnesota, St. Paul, MN 55108; or as above for CA.

AMERICAN SOCIETY OF NATURALISTS, SOCIETY FOR THE STUDY OF EVOLUTION, GENETICS SOCIETY OF AMERICA and STADLER SYMPOSIUM:

12-16 June 1983 at Washington Univ., St. Louis, MO. For information, contact The Organizing Committee, Evolution '83, Department of Botany, Washington University, St. Louis, MO 63130.

INTERNATIONAL SOCIETY FOR COMPARATIVE PSYCHOLOGY: 13-18 June 1983, the founding meeting in conjunction with the annual meeting of the Cheiron Society at Glendon College, Toronto, Canada. Research reports and other contributions are invited for possible presentation. Contact: Ethel Tobach, Dept. Mammalogy, Amer. Museum Natl. Hist., Central Park West at 79th St., New York, NY 10024.

THE AMERICAN SOCIETY OF MAMMALOGISTS: 19-23 June 1983 in Gainesville, FL.

INTERNATIONAL SOCIETY FOR RESEARCH ON AGGRESSION: Victoria, B.C., Canada on 29 June-2 July 1983. Contact Gordon W. Russell, Department of Psychology, University of Lethbridge, Lethbridge, Alberta, Canada T1K 3M4. The Society is interdisciplinary and includes those doing research with animal and human subjects.

AIBS: 7-11 August 1983, Univ. North Dakota, Grand Forks. Participating societies: Association Tropical Biology, Ecological Society of America, International Society of Ecological Modelling, and the Society of Systematic Zoology. Registration, housing, and field trip information is in the february issue of BioScience, or contact: Meetings Dept., AIBS, 1401 Wilson Blvd., Arlington, VA 22209.

ANIMAL STRESS: 6-8 July 1983, University of California, Davis. "Animal Stress: New Directions in Defining and Evaluating the Effects of Stress in Animals." Workshops, a poster session, and invited papers from behaviorists, physiologists, nutritionists, veterinarians, and experts in animal welfare. Contact: Gary P. Moberg, Dean's Office A&ES, University of California, Davis, CA 95616.

WORLD VETERINARY CONGRESS: 21-26 August 1983, Perth, Australia. Contact Howard Evans, President, World Association of Veterinary Anatomists, College of Veterinary Medicine, Cornell Univ., Ithaca, NY 14853.

AMERICAN PSYCHOLOGICAL ASSOCIATION: Anaheim, CA, 26-30 August 1983. Div. 6 (Physiological & Comparative Psychology), plans contributed papers, posters, symposia, discussion sessions, workshops, and invited speakers. The D. O. Hebb Award will be presented. Non-APA members may contact David B. Miller, Dept. Psychology, U-20, Univ. Connecticut, Storrs, CT 06268, (203-486-3516).

XVIIIth INTERNATIONAL ETHOLOGICAL CONFERENCE:

Brisbane, Australia, 29 Aug.-6 Sept., 1983.

Contact: Glen McBride, Animal Behav. Unit, Univ. Queensland, St. Lucia, Queensland, Australia 4067. This will be an open meeting.

IEC-BRISBANE TRAVEL SUPPORT:

The application for NSF travel support for younger investigators to attend the XVIIIth International Ethological Conference was funded. We are thus able to make awards by this spring. We have been asked to make slightly fewer awards than was originally requested, but at slightly larger stipends per individual recipient.

There will be 15-20 stipends of about \$800-\$1000 each. To encourage full use of this award, the DEADLINE HAS BEEN EXTENDED TO 1 MARCH 1983.

NOTE: Those who received their PH.D. degrees in 1976 or 1977 are now eligible for stipends-- in addition to those who obtained degrees in 1978-1983 as in the original announcement.

To apply for these funds please submit the following items: (1) nine copies of a 1-2 page curriculum vitae, (2) nine copies of any abstract you are submitting for consideration for the IEC program, and (3) one or two letters of recommendation. (For those who anticipate completion of the Ph.D. during 1983 it is desirable that the major professor include an assurance that the degree will be done by that time.) Incomplete applications will be returned. Notifications will be mailed on or about May first.

Submit applications and/or direct questions to: Dr. Lee C. Drickamer, Biology Dept., Williams College, Williamstown, MA 01267 (phone 413-458-3319).

SYSTEMATICS ASSOCIATION: 7-9 September 1983 at the British Museum (Natural History) in London. Theme: The origins and relationships of lower invertebrates. Contact: S. Conway Morris, Dept. of Earth Sci., The Open University, Walton Hall, Milton Keynes, MK7 6AA, England.

THE AMERICAN ORNITHOLOGISTS' UNION: 26 Sept.-1 Oct. 1983 in New York City. The AOU will celebrate its Centennial at its 101st Stated Meeting. Contact: Lester L. Short, Comm. Arrangements, American Museum of Natural History, Central Park West at 79th St., New York, NY 10024.

MEETINGS -- CALLS FOR PAPERS -- continued

SECOND IBEROAMERICAN ORNITHOLOGICAL CONGRESS: 27 Nov.-3 Dec. 1983 at Xalapa, Veracruz, Mexico. Theme: Neotropical ornithol. Mario A. Ramos, 2nd Iberoamer. Ornithol. Congr., Apatado Postal 388, Xalapa, Veracruz, Mexico.

TO ORGANIZE SYMPOSIA FOR ABS AND ASZ MEETINGS:

For the 1984 ABS meeting at E. Washington Univ. (August) or the 1984 ASZ meeting in Denver (December), contact:

Terry Christenson, Program Officer  
Department of Psychology  
Tulane University, New Orleans, LA 70118.

The deadline for submission of proposals for invited sessions and symposia for the 1984 ABS meeting is 1 December 1983.

GRANTS, FELLOWSHIPS AND POSITIONS AVAILABLE

BIRD BANDING: The Eastern Bird Banding Association and the Western Bird Banding Association are each offering research grants of \$250 in aid of research using bird banding techniques or data. Applicants should submit a resume of their banding and ornithological background, the project plan, and a budget to the joint selection committee chair, Robert C. Leberman, Powdermill Nature Reserve, Star Route South, Rector, PA 15677. No formal application forms are available, and the amount requested should not exceed \$250. The DEADLINE for receipt of applications is 15 March 1983.

PRIMATE FOUNDATION OF ARIZONA and ARIZONA STATE UNIV.:

Pre-doctoral fellowships for the study of chimpanzee behavior. The fellowship term is one year beginning Jan. or Aug.; award amount for 12 months is \$6000. Behavior observation experience is desirable and M.S. degree or equivalent is preferred. Applications must be received no later than 90 days prior to starting date. Apply now for term beginning Aug. 1983. Send letter of inquiry to: Jo Fritz, Executive Secretary, Primate Foundation of Arizona, P.O. Box 86, Tempe, AZ 85281.

LOUIS AGASSIZ FUERTES, MARGARET MORSE NICE, AND PAUL A. STEWART AWARDS: Wilson Ornithological Society Research Awards, Museum of Zoology, Univ. Michigan, Ann Arbor, MI 48109. DEADLINE for receipt of applic. is 1 March 1983.

NATIONAL SCIENCE FOUNDATION: NSF's Div. of Behavioral and Neural Sciences is recruiting Intergovernmental Personnel Act assignees for 1 or 2 yr. assignments in key staff positions, beginning Aug. 1983: Program Associate for Psychobiology, which requires 6-8 years independent research experience in animal behavior, physiological psychology, or brain-behavior research and Program Associate for Neuroscience, which requires 6-8 years independent research experience in developmental neuroscience. See below for more information.

NATIONAL SCIENCE FOUNDATION: NSF's Division of Behavioral and Neural Sciences is seeking candidates for two Intergovernmental Personnel Act (IGPA) Assignments from State and Local government. The individuals selected for these assignments will remain an employee of his or her home institution which may be reimbursed by NSF for salary and other cost related to the assignment. Nominations should be forwarded by the candidate's institution, not by the individual. The openings will be in the fields of neurobiology and psychobiology. Candidates should have a Ph.D. or equivalent experience and training in an appropriate field, plus a minimum of four to six years of successful scientific research experience. A broad general knowledge of the field and some administrative experience are also required. Assignment will include selecting reviewers for proposals; preparation of awarded and declined proposals; discussions with Principal Investigators about their proposed research; and providing technical leadership and guidance in the particular scientific area. Nominations should be forwarded to Dr. Richard Louttit, Division Director for Behavioral and Neural Sciences, NSF, Room 320, 1800 G St., NW, Washington, D.C. 20550. (Ph. 202-357-7564)

GRANTS, FELLOWSHIPS AND POSITIONS AVAILABLE -- continued

VOCAL DEVELOPMENT IN BIRDS AND HUMANS-- POST DOC.:

The Developmental Program in Psychology at the University of North Carolina at Chapel Hill has a post doctoral opening beginning in July, 1983. The position is for someone interested in doing collaborative research on vocal development in birds and human infants. The position is for one or more years and involves some teaching. Applicants with an interest or background in developmental psychology, animal behavior, and/or infancy are especially encouraged to apply, but all qualified persons will be considered.

Please send a letter of application, vita and three letters of reference to Dr. Meredith West, Department of Psychology, Univ. North Carolina, Davie Hall 013A, Chapel Hill, NC 27514. The University of North Carolina is an Affirmative Action/Equal Opportunity Employer.

ASSISTANT RESEARCH COORDINATOR: A part-time (20 hours/week) position is available at the Washington Park Zoo Research Center, Portland, OR. The position involves assisting the Research Coordinator in the supervision and training of undergraduates involved in behavioral research projects at the zoo. Qualifications include a B.S. in biology, psychology, or anthropology. Teaching experience as well as some knowledge of research methodology and standard zoological procedures are preferred. Salary is \$7000 per year. Ample opportunity exists for pursuit of personal research interests plus collaboration on publication of ongoing projects. Contact Jill D. Mellen, Research Coordinator, Washington Park Zoo Research Center, 4001 S.W. Canyon Rd., Portland, OR 97221.

ANIMAL BEHAVIOUR: Please check that the libraries and institutions you use subscribe.

ABS ADDRESS CHANGE? Write the Treas., H. Jane Brockmann, Dept. Zool., Bartram Hall, U. FL, Gainesville, FL 32611.

SYMPOSIA PLANNED FOR THE 1983 DAB-ASZ MEETING

27-30 DECEMBER 1983, PHILADELPHIA

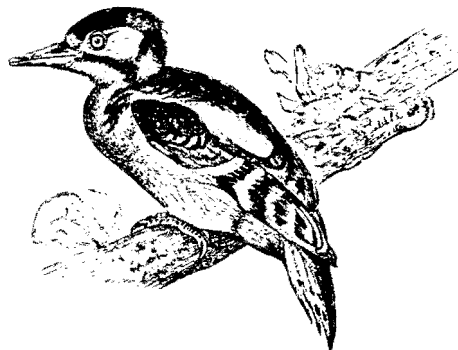
Paternal Behavior

Organized by Richard E. Brown.

Ecological Aspects of Social Evolution

Organized by D. I. Rubenstein and R. W. Wrangham.

Advances in behavioral ecology and evolutionary are to be presented in the context of naturalistic studies of single species or closely related species groups of mammals and birds. The themes will be (i) that ecological adaptation underlies and directs the course of social evolution, and (ii) that in order to understand social evolution, the strategies of females and males must be examined separately, each with respect to obtaining access to environmental resources and members of the opposite sex, and taking into account the consequences of intra-sexual competition.



#### COURSE ANNOUNCEMENTS AND INFORMATION AVAILABLE

WASHINGTON PARK ZOO supports a research-education program to teach behavioral research techniques to undergraduates. For information: Jill Mellen, WPZ, 4001 S.W. Canyon Rd., Portland, OR 97221.

ENVIRONMENTAL BIOLOGY/PUBLIC POLICY: The new Ph.D. program in environmental biology/public policy at George Mason University, Fairfax, VA, recently received an award of \$30000 from the Union Oil Company of California Foundation. The program is designed to introduce biology doctoral students to decision sciences, economics and public policy, as well as advanced environmental biology. David W. Johnson is Director of the program.

WEST QUODDY MARINE RESEARCH STATION, located near Lubec, ME, in the Bay of Fundy/Gulf of Maine area, is designed for the study and preservation of wildlife and to accommodate scientific investigation. Research has been conducted on marine mammals, with emphasis on the behavior and acoustics of whales. The marine mammal stranding program deals with rescues, rehabilitation, and release of injured animals, as well as post mortems and tissue analysis. Scientists working in related areas of study may be able to arrange for use of the field station. WQMS is a non-profit organization supported by grants, donations and memberships. Members receive a yearly newsletter. Contact Dorothy R. Spero, WQMS, Biology Dept., Princeton Univ., Princeton, NJ 08544.

ZOO OBSERVATION TRAINING: Designed to teach behavioral research to high school students ZOT consists of an introduction in the classroom, data collection in the zoo, and data analysis back at school. Request copies of the curriculum from Judith White, Chief, Office of Educ., National Zool. Park, Washington, D.C. 20008.

HUMAN/OTHER ANIMAL INTERACTIONS: A computerized reference bank of publications of research and theory on human perceptions, knowledge and behaviors toward other animals is being compiled at the Yale Sch. of Forestry & Environ. Studies. References will include: marine mammal issues; activities such as hunting, trapping, birdwatching, scientific study; energy, agricultural, industrial and urbanization impacts; wildl. trade; zoo, park and museum visitation; urban wildl.; and historical, cross-cultural and socioeconomic studies. When completed, the reference bank will be available to all interested persons. Send literature citations to: Stephen Kellert, Yale Sch. For. & Envir. Studies, 205 Prospect St., New Haven, CT 06511.

ANATOMY: Graduate Studies, Dept. of Anatomy, New York State College of Veterinary Medicine, Ithaca, NY 14853.

#### CALLS FOR MANUSCRIPTS

ANIMAL BEHAVIOR: Under the editorship of Jerram Brown, SUNY Press is soliciting book-length manuscripts based on empirical research, new interpretations of pre-existing data bases, or proceedings of conferences of topical interest. Manuscripts should represent original work of the author (or authors), not published elsewhere, and can deal with any facet of animal behavior or behavioral ecology. All inquiries about the series and all manuscripts and book proposals should be submitted to Susan D. Suarez, Ph.D., the Editor of SUNY Press, State University Plaza, Albany, NY 12246 (ph. 518-473-7602).

BIOLOGICAL EXTINCTION: A Society for the Study of Biological Extinction was formed in Nov. of 1981. The Society publishes a refereed journal, BIOLOGICAL EXTINCTION, devoted to the study of the causes and implications of extinction: past, present, and future. Materials submitted for publication and inquiries about Society membership should be sent to: Benjamin H. Banta, Society for the Study of Biological Extinction, P.O. Box 90325, San Diego, CA 92109 (ph. 714-483-0346).

#### CALLS FOR MANUSCRIPTS-- continued

The National Association of Biology Teachers' Committee for Animal Behavior publishes a newsletter for high school, community college and university animal behavior teachers. Short articles describing field or lab studies for high school students and art work depicting animal behavior is requested. Deadline: 10 April for the May issue. Send materials to: 'Laine Gurley, 2731 N. Arlington Heights, Arlington Heights, IL 60005. For annual membership in CABT and a subscription to the CABT newsletter (three 8 page issues/yr.) send \$2.

#### OTHER SOCIETIES

ASZ: Persons who are interested in joining the American Society of Zoologists are urged to communicate their interest to a member of the Society or to contact the Business Office (Box 2739, California Lutheran College, Thousand Oaks, CA 91360, 805-492-3585) for an application form. Annual dues of \$35 for members and \$20 for student members pay for a subscription to the American Zoologist and are also used to support various activities of the Society.

THE ORNITHOLOGICAL SOCIETIES OF NORTH AMERICA (OSNA): The American Ornithologists' Union, the Cooper Ornithological Society and the Wilson Ornithological Society, contact: Charles Walcott, Director, OSNA, Cornell Lab. Ornithology, 159 Sapsucker Woods Rd., Ithaca, NY 14850.

SOCIETY FOR THE STUDY OF AMPHIBIANS: Publishes the Journal of Herpetology (quarterly) and a quarterly newsletter, Herpetological Review. Contact: Henri C. Seibert, Dept. Zoology, Ohio Univ., Athens, OH 45701.

SAN FRANCISCO BAY BIRD OBSERVATORY: Members may participate in observatory projects, use observatory facilities for projects of their own design (contact Julie Klingman, Research Director), and receive the quarterly newsletter. Dues are \$15 per year (students \$10). Contact: San Francisco Bay Bird Observatory, Box 247, Alviso, CA 95002 (ph. 408-946-6548).

#### PUBLICATIONS AVAILABLE

AMPHIBIANS AND REPTILES IN PENNSYLVANIA by G. J. McCoy. 1982, 91 pp. Carnegie Mus. Natl. Hist. Special Publ. No. 6. \$4/copy + \$1 postage and handling (PA residents add \$0.24 tax). Publications Secretary, Carnegie Museum of Natural History, 4400 Forbes Ave., Pittsburgh, PA 15213.

AOU CHECKLIST: The 34th Supplement to the American Ornithologists' Union Check-list of North American Birds, published as a suppl. to The Auk Vol.99(3), July 1982, provides an updated list of species of birds recorded with appropriate documentation through Dec. 1981 from Canada and the U.S. (incl. Hawaii), using the sequence, taxonomy and English names of the forthcoming 6th ed. Copies avail. (\$3.00 ea. ppd.) from G. E. Woolfenden, Dept. Biol., Univ. South Florida, Tampa, FL 33620.

BIOSIS SEARCH: The brochure, "How to Search Biological Abstracts and Biological Abstracts/RRM by Computer," contains info. about computerized lit. searching in general and an overview of the BIOSIS Previews data base. It is free. Request up to 25 copies from: BIOSIS Educ. & Training Group, 2100 Arch St., Philadelphia, PA 19103.

WILDLIFE REHABILITATION, VOLUME I: Edited by Paul Beaver, Forest Preserve District of DuPage Co. Send \$20 hardcover, \$15 softcover, to Wildlife Rehabilitation, Wildlife Haven, 525 S. Park Blvd., Glen Ellyn, IL 60137. Make check to "Friends of the Furred and Feathered."

PEREGRINE FALCON: A full-color 16x25" poster designed to assist in the identification of the Peregrine Falcon has been developed by The Peregrine Fund of Cornell Univ. It illustrates adult and immature plumages and eggs and chicks. The Fund hopes to enlist the aid of individuals likely to be in remote areas where the birds nest. Free from the Publications Unit, U.S. Fish and Wildlife Service Washington, D.C. 20240, or The Peregrine Fund, Lab of Ornithology, Cornell Univ., Ithaca, NY 14850.

**AMERICAN MUSEUM PUBLICATIONS:** The American Museum of Natural History BULLETIN (published since 1881) and NOVITATES (published since 1921) may be ordered (single copies or standing order) from the Museum. Back issues for approx. ten years are available. Orders, questions, and requests for price lists may be directed to: Scientific Publications Dist., American Museum of Natural History, Central Park West at 79th St., New York, NY 10024. Persons interested in the ANTHROPOLOGICAL PAPERS (pub. before 1960), the MEMOIRS, or the CENTRAL ASIATIC EXPEDITIONS should contact: Walter J. Johnson, Inc., 355 Chestnut St., Norwood, NJ 07648 (ph. 201-767-1303).

**INVERTEBRATES:** Free publications (1) A Guide to the Naididae (Annelida: Clitellata: Oligochaeta) of N.A., by J. K. Hiltunen and D. J. Klemm, EPA-600/3-82-033, 58 pp. (2) A Guide to the Freshwater Tubificidae (Annelida: Clitellata: Oligochaeta) of N.A., by K. S. Stimpson, D. J. Klemm, and J. K. Hiltunen, EPA-600/3-82-033, 61 pp. (3) Leeches (Annelida: Hirudinea) of N.A., by D. J. Klemm, EPA-600/3-82-025, 177 pp. (4) Freshwater Snails (Mollusca: Gastropoda) of N.A., by J. B. Burch, EPA-600/3-82-026, 294 pp. ORDER FROM: ORD Publications, U.S. EPA, CERL, Cincinnati, OH 45268.

**NATURAL HISTORY OF AMPHIBIANS AND REPTILES OF WISCONSIN** by Richard Carl Vogt. The first comprehensive guide to the distrib., ecol. and behavior of WI herps. Includes range maps for WI and U.S., and sonograms of frog calls. Milwaukee Public Museum, 800 W. Wells Street, Milwaukee, WI 53233 (\$25.95 + 1.10, WI residents add 4% tax).

Philopatry, Inbreeding and the Evolution of Sex, William M. Shields, SUNY Pr., State Univ Plaza, Albany, NY 12246.

Evolution: Genesis and Revelations, C. Leon Harris, SUNY Press, State University Plaza, Albany, NY 12246.

Lions Share-- The Story of a Serengeti Pride, Jeanette Hanby, illus. by David Bygott, Houghton Mifflin, 2 Park St., Boston, MA 02108.

**MICROCOMPUTER USE BY ECOLOGISTS:** A questionnaire will be sent to microcomputer users, and a compilation of results will be published or distributed to interested parties. If you use microcomputers for ecological research or teaching, please contact: Michael H. Levin, The Carriage House at the Willows, Villanova, PA 19085.

**MAMMAL SLIDES:** The American Society of Mammalogists has established a collection of 35 mm slides of mammals and of their biology, with the goals of enhancing instruction in mammalogy, vertebrate biology, natural history, and related courses, and providing a service for other noncommercial educational purposes. The 1982 catalog, which describes approx. 750 slides, is available for \$2 from J. A. Lackey, Dept. of Zoology, SUNY, Oswego, NY 13126. Slides are sold for \$.80 each. The Mammal Slide Library Committee is soliciting donations or loans of high quality slides for the 1983 series. Contributors retain all publication and commercial rights; photo credits appear on slide mounts and in the catalog.

**VIREO:** Visual Resources for Ornithology, a library of bird photographs for science, art, and education invites your participation-- as a photographer, as a user, and as a supporter. VIREO especially seeks contributors with series on particular groups of birds, on classes of behavior, or on other specialized themes. Contact: Director, VIREO, Academy of Natural Sciences, 19th and Thermal and Behavioral Energetics, John N. Mugaas and James R. King, 78 pp., No. 5 (\$8). Cooper Ornithological Society, P.O. Box 368, Lawrence, KS 66044.

**ABS NEEDS MEMBERS:** ENCOURAGE YOUR COLLEAGUES AND STUDENTS TO JOIN -- AND DON'T NEGLECT TO RENEW.

Copy the form in this NEWSLETTER and/or request additional membership forms from the Treasurer.

After attending my first AIBS Board Meeting (November 1982), I have the general feeling that the Animal Behavior Society should continue to support AIBS with its affiliation. It's an understatement to say that politicians do not appreciate the needs of the scientists. A significant means for informing the government of our views and requirements is to designate an organization that we can live with and will speak out for us. The AIBS is increasing its ability to do this. For example, AIBS members played a key role in gaining major concessions from animal welfare groups with regard to the "Humane Care and Development of Substitutes for Animals in Research Act."

The AIBS has a Public Affairs Network well coordinated by Patricia Brazeel Lewis (Manager, Public Responsibilities, AIBS, 1401 Wilson Blvd., Arlington, VA 22209 [703-527-6776]). The Public Responsibilities Department seeks to organize and develop a nationwide communication system for the exchange of information between public policy decision makers and biological scientists for the purpose of encouraging the increased use of expert data and view points concerning the biological impact of proposed government regulations and legislative action. The network is comprised of the manager, the members of the AIBS Public Responsibilities Committee (makes policy and programmatic recommendations to the AIBS Governing Board and Executive Committee), the AIBS Washington Council (a study group that assists the Department director in governmental information gathering and analysis), and state coordinators (representatives) in all 50 states who provide local contact with congressional delegations. If you wish to be part of this network, please contact Pat Lewis.

In these times of decreased government support for biologists, a strong unified voice from us as a group is a major and necessary tactic for being heard on Capitol Hill. Biological societies need to practice reciprocal altruism in helping to strengthen one another. Moreover, professional biologists need to be better understood by "conservation" and "nature" groups (some quite influential) and AIBS needs their support. Although the Nature Conservancy is a member of AIBS, other large groups such as the Sierra Club are not. If the AIBS is to function optimally, it should have the support of all U.S. biologically-oriented societies, from local to national organizations, both professional and non-professional.

-- Edward M. Barrows, ABS Representative to the AIBS Governing Board.

#### FUTURE ANIMAL BEHAVIOR SOCIETY ANNUAL MEETINGS:

1983 June 19-24, Bucknell University, Lewisburg, PA, host: Douglas Candland, Department of Psychology

1984 August 13-17, Eastern Washington Univ., Cheney, WA, host: Steven B. Christopher, Department of Psychology

1985 June, Raleigh-Durham, NC, final arrangements will be announced when available.

#### DEADLINES FOR NEWSLETTERS:

Animal Behavior Society: 10 April 1983 for May NEWSLETTER.

ASZ Division of Animal Behavior: 1 April 1983 for Spring (May) Newsletter.

Send materials to: Anna E. Ross, Editor of the DAB-ASZ and ABS NEWSLETTERS, Department of Zoology, Clemson University, Clemson, SC 29631 (phone: 803-656-2328).

Sidney A. Gauthreaux, Jr. ABS and DAB-ASZ Secretary, Department of Zoology, Clemson University.

**VOLUNTARY CONTRIBUTIONS:** The Animal Behavior Society welcomes contributions from its members. Members may make the ABS a beneficiary of an estate or name the ABS in a will.

PUBLICATIONS AVAILABLE-- continued

HANDBOOK ON POPULATION PROJECTIONS-- How They are Made and How They Make Themselves Come True, The Sierra Club, a 130 page guide for those without demographic training on the use and misuse of population projections. Because of the way they are prepared, population projections for communities are often de facto growth policies, helping to determine the type and location of growth. For \$6 (1st class postage, add \$1). Information Services, Sierra Club, 530 Bush St., San Francisco, CA 94108.

-----

SALMON AND TROUT MIGRATORY BEHAVIOR SYMPOSIUM: 33 papers on the migration and distribution of salmonids by fisheries scientists from around the world. Proceedings, 309 pp., edited by E. L. Brannon and E. O. Salo, are available for purchase from E. L. Brannon, School of Fisheries, Univ. Washington, Seattle, WA 98195, for \$19.50 + 1.50 postage and handling.

-----

Maverick Cats: Encounters with Feral Cats, Ellen Perry Berkeley, Walker & Co., 720 5th Ave., New York, NY 10019.

-----

PHYSIOLOGICAL INTEGRATIONS IN ACTION by Edward F. Adolph. A jargon-free introduction to physiological integration which emphasizes the interplay between organ systems. A supplement to The Physiologist, from the American Physiological Society, 9650 Rockville Pike, Bethesda, MD 20814 (\$15.00, 50% discount for 10 or more copies).

-----

IF YOU SEE A COLOR MARKED BIRD: Send the details of the sighting to the Bird Banding Laboratory, Laurel, MD 20708 or, in Canada, to the Banding Office, Canadian Wildlife Service, Ottawa, Ontario K1A 0E7. These agencies coordinate color banding programs by a permit system to avoid duplication, and will forward the data to the bander.

-----

RESOURCE DIRECTORY OF HANDICAPPED SCIENTISTS: The AAAS Project on the Handicapped in Science is updating the Directory, first published in 1978. It includes a listing of disabled scientists, engineers, and science students in the U.S. The Directory is a source of information on accommodation in the workplace. persons who would like to be listed in the updated Resource Directory of Handicapped Scientists should write to the Project on the Handicapped in Science, AAAS, 1776 Massachusetts Ave., N.W., Washington, D.C. 20036, or call 202-467-4497, voice or TTY. The Project has published other guides and reports including Barrier Free Meetings: A Guide for Professional Associations, and Scientific and Engineering Societies: Resources for Career Planning.

-----

"GRADUATE PROGRAMS IN ANIMAL BEHAVIOR: 1981-82" available from: Wayne Aspey, ABS, Dept. of Zoology, Ohio State Univ., Columbus, OH 43210. Send a 9 x 12" self-addressed envelope with \$1.00 postage (\$2.00 non U.S.).

-----

ANIMAL CARE GUIDELINES: "Guidelines for the Use of Animals in Research," ANIMAL BEHAVIOUR (1981, Vol. 29: 1-2). Reprints available from: Sidney A. Gauthreaux, Jr., ABS Secretary, Dept. of Zoology, Clemson Univ., Clemson, SC 29631 (send a self-addressed envelope).

-----

ABS Members may request a copy of the ABS Constitution and Bylaws and/or current ABS Policy from the Secretary.

-----

ABS NEWSLETTER: We have a few extra copies of the NEWSLETTER 1981-1982. ABS members may request an issue they have misplaced. Write to the NEWSLETTER Editor.

-----

20th ANNIVERSARY OF FOUNDING OF ABS:

A session at the 1984 meeting will review the history of the society, honor the founding members, and include a slide show of past events and key people. The ad hoc Anniversary Committee welcomes suggestions from ABS members. Contact Dietland Muller-Schwarze, Chair, Anniversary Committee, Dept. Envir. & Forest Biology, SUNY, Syracuse, NY 13210.

ANIMAL BEHAVIOR SOCIETY DIRECTION OF CORRESPONDENCE

\*\* Dues, All Changes of Address, Membership Application, Membership Lists:

H. Jane Brockmann, Treasurer  
Dept. of Zoology, Bartram Hall  
Univ. of Florida, Gainesville, FL 32611.

\*\* ANIMAL BEHAVIOUR: Manuscripts, Reviews, Editorial Policy:

Patrick Colgan, Editor  
Dept. of Biology, Queens Univ.  
Kingston Ontario K7L 3N6 Canada.

\*\* ANIMAL BEHAVIOUR: Missing Issues, Duplicate or Defective Issues, Back Issues:

Journal Subscription Dept. (Attn. E. Lowe)  
Bailliere Tindall, 8 Trident Way, Brent Rd.  
Southall, Middlesex, England.

-----

We regret to inform the members of the Animal Behavior Society that Dr. Jack A. Ward of the Department of Biological Sciences, Illinois State University, Normal, Illinois, the chairperson of our film committee, died of a heart attack on 5 December 1982.

-----

CHAIR, FILM COMMITTEE: Wayne P. Aspey, Dept. of Zoology, Ohio State University, Columbus, OH 43210. Contact Wayne Aspey if you have a film to submit for the June ABS meeting at Bucknell, or for information about films.

-----

PROCEDURE FOR THE INTRODUCTION OF RESOLUTIONS  
AT THE ANNUAL BUSINESS MEETING OF ABS

1. Resolutions deal with timely and substantive political and social issues and are transmitted by the ABS to external agencies, organizations, or the general public.
  2. Written resolutions should be submitted to the Chair of the Public Affairs Committee 60 days prior to the annual business meeting. Each resolution should provide direction to the President so that it can be acted upon promptly.
  3. Timely issues may be submitted up to 24 hours prior to the annual business meeting for evaluation by the Public Affairs Committee.
  4. The Public Affairs Committee, as one of its responsibilities, will receive, evaluate, and if necessary, edit submitted resolutions. In the event that editing is necessary, or if the Public Affairs Committee deems the resolution to be inappropriate to the aims of ABS, this decision shall be transmitted to the submitter(s) no later than 15 days prior to the start of the meeting during which the annual business meeting is convened. The initiator(s) of the resolution may appeal, in writing, to the Executive Committee. Final decisions regarding resolutions reached by the Executive Committee during its annual meeting will not be subject to appeal during the interval between the meeting of the Executive Committee and the annual business meeting. The Executive Committee should reach a decision on the appeal within 2 months following the annual meeting.
  5. Approved versions of resolutions will be made available to the members during the course of the meeting by being posted on available bulletin boards; hard or projected copies of resolutions will be available for distribution or viewing at the annual business meeting.
  6. Approval by a simple majority of members voting at the annual business meeting is required for passage of a resolution.
  7. Regardless of the fate of a resolution at the business meeting, a simple majority of those present can approve a mail ballot for the consideration of a resolution by means of the NEWSLETTER.
  8. Approval of a resolution at the business meeting or by mail ballot will be followed by prompt action by the President of ABS as directed in the resolution.
  9. Approved resolutions will be published in the NEWSLETTER.
-

PLENARY ADDRESSES SCHEDULED FOR THE ABS MEETING  
19-24 JUNE 1983, BUCKNELL UNIVERSITY, LEWISBURG, PA

- Monday: Charles Walcott, Cornell University  
"The Continuing Mystery of Pigeon Homing"  
Tuesday: Colin S. Pittendrigh, Hopkins Marine  
Station of Stanford University  
"Biological Clocks"  
Wednesday: Sue Savage-Rumbaugh, Yerkes Primate Research  
Center  
"Primate Communication: From Action, to  
Gesture, to Symbol"  
Thursday: Jeanne Altmann, University of Chicago  
"Lessons Learned from the Monkeys"  
Friday: Fernando Nottebohm, Rockefeller University  
"Properties of Brain Pathways for Vocal  
Learning"

WORKSHOP SCHEDULED FOR THE ABS MEETING

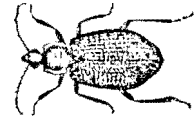
19-24 JUNE 1983, BUCKNELL UNIVERSITY, LEWISBURG, PA

- Wednesday: "Conservation of Endangered Species"  
The workshop will be led by those working  
on problems of conservation and by  
foundation and agency personnel concerned  
with conservation.

SYMPOSIA PLANNED FOR THE ABS MEETING  
19-24 JUNE 1983, BUCKNELL UNIVERSITY, LEWISBURG, PA

- Biological Factors in Social Behavior: A Symposium  
in Honor of John Paul Scott. Organized by Robert J.  
Blanchard, University of Hawaii at Manoa. John L.  
Fuller, State University of New York, will chair the  
session.  
Individual and Intergroup Differences in Behavior:  
Origins, Interpretation and Significance. Organized  
by Anne B. Clark, Kellogg Biological Station and  
Zoology Department, Michigan State University, East  
Lansing and Hilary O. Box, Department of Psychology,  
University of Reading, England.  
The Role of Animal Behavior in Conservation Biology.  
Organized by Thomas E. Lovejoy, World Wildlife Fund  
and Devra C. Kleiman, National Zoological Park.

-----  
ERROR: There is an error in the Minutes of the Animal  
Behavior Society Business Meeting of 18 August 1982  
(published in the November 1982 ABS NEWSLETTER, Vol. 12,  
No. 4). Item 12 of the Minutes reports the MOTION on  
Bylaws changes presented to and passed by the members  
present. The change made in Article IV, Section 2.  
Should read: Policy Committee: a. Shall consist of a  
Chairperson appointed for three years and at least three  
members appointed for staggered terms of three years  
each, such that at least one term expires each year.  
[Instead of at least two terms expire each year.]  
-----



APPLICATION FOR MEMBERSHIP: ANIMAL BEHAVIOR SOCIETY

Name in full \_\_\_\_\_ Degrees \_\_\_\_\_

Mailing address \_\_\_\_\_

Institution \_\_\_\_\_ Position \_\_\_\_\_

\_\_\_\_\_ Member - \$27.00 (U.S.) Receive ANIMAL BEHAVIOUR and NEWSLETTER.

\_\_\_\_\_ Student Member - \$17.00 (U.S.) Receive ANIMAL BEHAVIOUR and NEWSLETTER.

\_\_\_\_\_ Spouse Member - \$9.00 (U.S.) Receive NEWSLETTER only.

\_\_\_\_\_ Non-Member Subscription (Library, etc.) - \$9.00 (U.S.) Receive NEWSLETTER only.

Membership for calendar year 19\_\_\_\_. Date and place of birth \_\_\_\_\_

Specific area of interest \_\_\_\_\_

Member of these societies: \_\_\_\_\_ Ecol. Soc. Amer.; \_\_\_\_\_ Amer. Soc. Zool.; \_\_\_\_\_ A.I.B.S.;

\_\_\_\_\_ Amer. Psych. Assoc.; \_\_\_\_\_ Wildlife Soc.; \_\_\_\_\_ Other(s) \_\_\_\_\_

My student membership application is endorsed by: (Dept. Head, ABS Member, ABS Fellow)

(name) \_\_\_\_\_ (signature) \_\_\_\_\_

This application form should be sent with remittance (make checks payable to ANIMAL BEHAVIOR SOCIETY) to:

H. Jane Brockmann, ABS Treasurer  
Dept. of Zoology, Bartram Hall  
University of Florida  
Gainesville, FL 32611

PLEASE COPY AND DISTRIBUTE

ANIMAL BEHAVIOR SOCIETY MEMBERS

PLEASE CHECK TO BE SURE THE MAILING LABEL IS CORRECT

SEND ADDRESS CORRECTIONS AND/OR ADDRESS CHANGES FOR THE NEWSLETTER AND ANIMAL BEHAVIOUR

TO THE TREASURER

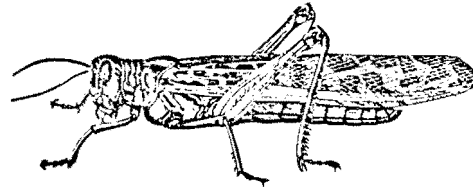
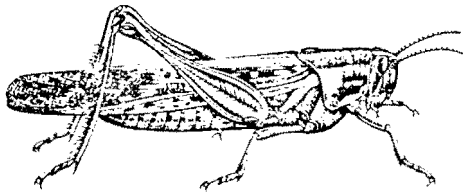
H. Jane Brockmann, ABS Treasurer  
Department of Zoology  
Bartram Hall  
University of Florida  
Gainesville, FL 32611

**ANIMAL BEHAVIOR SOCIETY**

Please use this form for address corrections

Date.....

Name	
Mailing Address	
State/Country	
Postal or Zip Code	



SIDNEY A. GAUTHREAUX, JR., Secretary  
Animal Behavior Society  
Department of Zoology  
Clemson University  
Clemson, South Carolina 29631

Non-Profit Org.  
BULK RATE  
U. S. Postage  
PAID  
Clemson, SC  
Permit No. 23