



# NEWSLETTER

## Animal Behavior Society

Vol. 54, No. 2  
May 2009

A quarterly  
publication

Regina H. Macedo, Secretary

Raphael I. Dias, Editorial Assistant

Departamento de Zoologia, Universidade de Brasília  
Brasília, DF 71745-612 Brazil

---

### ANNOUNCING THE 2009 STUDENT GRANT AWARDS

*John M. Eadie, Senior Member-at-Large, Chair 2009  
Student Research Grant Committee*

We are pleased to announce the winners of the 2009 Student Research Grants. We received 96 applications, an increase of almost 10% from last year. As usual, the number of applications exceeded the number we could fund. The decision process was not easy, given the high quality of so many proposals. We had sufficient funds to support 40 proposals of the 96 submitted (approximately 43%), and funding ranged from \$450 to \$2,000. These include one E. O. Wilson Award at \$1,000 and two Cetacean Behavior and Conservation awards (\$1,500 and \$500).

Each proposal was evaluated and ranked by three independent reviewers. This would be an impossible task without the heroic and entirely voluntary efforts of several wonderful colleagues. I was extremely fortunate to have a group of 29 ABS members who volunteered their time to review the proposals. I extend a heartfelt thank you to: Mark Abrahams, Mitchell Baker, Alexandra Basolo, Alison Bell, Jane Brockmann, Colleen Cassady St. Clair, Stephanie Doucet, Todd Freeberg, Peggy Hill, Jordan Karubian, Rosemary Knapp, Tom Langen, Manuel Leal, Bette Loiselle, Glauco Machado, Rogelio Macias-Ordóñez, David McDonald, Kevin McGraw, Jeff Podos, Peter Nonacs, Juan Carlos Reboreda, Renee Robinette Ha, Patricia Schwagmeyer, Ron Swaisgood, Bill Wagner, David White, Brian Wisenden, Bob Wong, and Bill Wright. Their long hours and battles through the nuances of the web site are deeply appreciated by myself, the awards committee and certainly the students.

I would like to thank Shan Duncan for the very helpful administrative support provided throughout the whole process; Alex Basolo (2<sup>nd</sup> MAL) for administering the

Developing Nations Research Awards, reviewing several proposals, and providing advice; Jeff Podos (3<sup>rd</sup> MAL) for reviewing several proposals and providing feedback on several issues; and all ABS members who have donated funds to this program.

The successful applicants are listed below.

#### E. O. WILSON CONSERVATION AWARD

**Julie Rushmore.** University of Georgia. *Behavioral determinants of pathogen transmission in African great apes.*

#### CETACEAN BEHAVIOR AND CONSERVATION AWARDS

**Jennifer Nicole Schneider.** The State University of New York - Buffalo. *Song structure and spatial dynamics of humpback whales on the breeding grounds.*

**Jennifer Daisy Kaplan.** Hunter College. *'Decoding' dolphin whistles: a closer examination of the nature and function of dolphin whistle repertoires and their role in dolphin acoustic communication.*

#### STUDENT RESEARCH AWARDS

**Daniel Hanley.** University of Windsor. *Does egg colouration reveal female quality, and do males respond to this signal?*

**Jonathan Patrick Kelley.** University of California - Davis. *Predator-driven costs of reproduction in a Neotropical bird.*

**Alecia Jillian Carter.** The Australian National University. *Personality and sociality in chacma baboons.*

**Fangyuan Hua.** University of Florida. *Does selective logging result in a changed “landscape of fear” for the understory avian community in the lowland tropical rainforest of Sumatra?*

**Shira Gordon.** University of Cincinnati. *The effects of airborne noise on seismic communication of wolf spiders, Schizocosa ocreata.*

**Elinor Mermei Lichtenberg.** University of California - San Diego. *The role of cost minimization in stingless bee eavesdropping decisions.*

**Joanna Kay Hubbard.** College of William and Mary. *Reading between the morphs: the genetic basis of continuous phenotypic variation.*

**David Hof.** University of Massachusetts - Amherst. *Reliability and maintenance of aggressive signals in parulid warblers.*

**Justin L. Golub.** Clark University. *The impact of embryonic learning on post-hatching survival in threespine stickleback (Gasterous aculeatus).*

**Kristen Joy Epp.** Texas State University. *The influence of cannibalism and predation of offspring on population dynamics in a unisexual-bisexual poeciliid complex.*

**Greg Mitchell.** University of Guelph. *Factors that limit individual performance of migratory songbirds during autumn migration.*

**Brian Andrew Schwartz.** Washington State University. *Biparental incubation: Sex-specific investment and the necessity of male care in tropical birds.*

**Adam South.** Tufts University. *The identification and characterization of seminal fluid proteins in Tribolium castaneum.*

**Bryan Arnold.** University of Maryland - College Park. *Do contact calls recruit relatives in pallid bats (Antrozous pallidus)?*

**Myra Carlen Hughey.** Boston University. *Species interactions in a spatial context: prey cues and foraging patterns of three insects on red-eyed treefrog egg masses.*

**Karyn Collie.** The Graduate Center CUNY. *Evolution of cannibalism in the Colorado potato beetle, Leptinotarsa decemlineata.*

**Carlos Enrique Ibarra Alvarado.** Instituto de Ecología, A.C. *Comparative sensory ecology of the bats Pteronotus davyi and Pteronotus personatus (Chiroptera: Mormoopidae).*

**Matthew A. Barbour.** San Diego State University. *Rattlesnake responses to pursuit-deterrent signals from California ground squirrels.*

**Emily Cramer.** Cornell University. *The effect of energy and health on song structure in house wrens.*

**Sara Ann Kaiser.** Washington State University. *Adaptive significance of plasticity in hormone-mediated avian reproductive behaviors.*

**Amanda Leigh Murray.** Utah State University. *Do behavioral and physiological factors affect translocation success in bighorn sheep?*

**Julian (Vinay) A. Kapoor.** Cornell University. *The adaptive significance of microgeographic dialects in a lekking hummingbird.*

**Shelby Julian Sturgis.** Stanford University. *Cuticular hydrocarbon template formation in red harvester ant, Pogonomyrmex barbatus, nestmate recognition.*

**Sherri Ann Emer.** Florida Institute of Technology. *Determining the sensitivity and mechanisms of snake infrared imaging through the application of operant conditioning techniques.*

**Calandra Q. Stanley.** York University. *Tropical deforestation and the wood thrush (Hylocichla mustelina): Exploring the consequences of winter habitat quality and determining migratory connectivity.*

**Donelle Robinson.** Ohio University. *Variation in female preference for the pigment pattern vertical bars in Xiphophorus cortezi: the effects of experience.*

**Mrinalini Watsa.** Washington University. *Genetic structure and chimerism in free ranging saddle-back tamarin (Saguinus fuscicollis) populations in southeastern Peru.*

**Susan DeVries.** University of Southern Mississippi. *Testosterone-mediated behavioral trade-offs in a female songbird, the northern cardinal (Cardinalis cardinalis).*

**Brittany Enzmann.** University of California - Los Angeles. *Parental investment in harvester ants (genus Pogonomyrmex): a model system for understanding life history tradeoffs.*

**Kathryn D. Rieveley.** University of Windsor. *A test of signal co-option in Neotropical royal flycatchers: courtship, territorial, and anti-predator functions of crest displays.*

**Han ChangSeok.** Seoul National University. *"Intimidatory" courtship signals of male water striders, Gerris gracilicornis.*

**Catherine Carney.** University of North Carolina - Greensboro. *Species differences and interactions in wild Peromyscus ultrasonic vocalizations.*

**Samantha Franks.** Simon Fraser University. *Carry-over effects in a long-distance migratory shorebird: How do winter origin, foraging habitat, and age affect reproductive success?*

**Mayte Ruiz.** Indiana University - Bloomington. *The role of food availability on reproduction and immunity.*

**Karie Decker.** University of Arizona. *Seasonal decline in avian clutch size: a test of four alternative hypotheses.*

**Catherine Markham.** Princeton University. *Dynamic habitat partitioning among savannah baboon social groups.*

**Sarah Martin.** University of Kentucky. *Does food supplementation affect patterns of female settlement, mate choice, and extra-pair paternity in the indigo bunting?*

## **ANNOUNCING THE 2009 DEVELOPING NATION RESEARCH AWARDS**

*Alexandra Basolo, 2<sup>nd</sup> Member-at-Large, 2009 Student Research Grant Committee*

Congratulations to this year's Developing Nations Research Grant (DNG) awardees! We received eight applications for DNG grants and we were able to fund our top two proposals (25%). We are pleased to award grants to the following students:

**Anita Aisenberg.** Instituto de Investigaciones Biológicas Clemente Estable, Uruguay. *Devoted males in a wolf spider inhabitant of coastal sand dunes: what leads to sex role reversal?*

**Mauricio Cantor.** Universidade Federal de Santa Catarina, Brazil. *Exploring the social structure of Guiana dolphins (Sotalia guianensis) through network analysis.*

## **DONATIONS TO ABS FUNDS**

More than \$16,000 was contributed in calendar year from May 1, 2008-April 30, 2009 to support the student grant competitions and other ABS activities, as detailed here:

Student Research Grants: \$5,153  
Silent Auction: \$893  
E.O. Wilson Conservation Award: \$549  
Cetacean Behavior and Conservation Award: \$144  
Ethnic Diversity Award: \$766  
Latin American journal shipment: \$500  
Developing Nations Research Award: \$3,605  
Latin Travel Grant: \$880  
Unrestricted funds: \$1,228  
Credit card offset donations: \$1,026.

Contributors are listed at the end of the Newsletter in alphabetical order.

## **BIG THANK YOU TO ALL CONTRIBUTORS!**

### **GEORGE W. BARLOW MEMORIAL AWARD FUND**

An endowment fund has been established in memory of George W. Barlow for the purpose of encouraging excellence in graduate student research in the field of animal behavior. The Barlow Award will be given annually to one top-ranked proposal in the Student Research Grant cycle in accordance with the most recent ABS Student Research Grant competition rules. A cash award and a certificate will be given to the student selected. The amount of the Barlow Award will be the maximum amount allowed for a Student Grant Award as specified in the most recent ABS bylaws or policies, regardless of the support amount requested in the proposal. The award will be paid from proceeds (interest and dividends) generated by the George W. Barlow Endowment Fund, which is currently growing through contributions and stands at \$13,110. Once the fund can support 50% of the required award amount, the first award will be given, with the Society donating the remainder of the award amount from student research funds until the fund is fully self-sustainable.

We wish to thank the following people who donated to this Award Fund in calendar year 2008 (listed in reverse alphabetical order): Brian D. Wisenden, Jason V. Watters, Judy A. Stamps, Matthew Robert Holdgate, Victor J. De Gheert, Ethan D. Clotfelter, Russell P. Balda.

## DIRECTION OF CORRESPONDENCE

**ABS Newsletter:** Send general correspondence concerning the Society to Regina Macedo, rhfmacedo@unb.br. Deadlines are the 15th of the month preceding each newsletter. The next deadline is **15 July, 2009**. Articles submitted by members of the Society and judged by the Secretary to be appropriate are occasionally published in the ABS newsletter. The publication of such material does not imply ABS endorsement of the opinions expressed by contributors.

**Animal Behavior Society Website:**  
<http://www.animalbehavior.org/>

**Animal Behaviour, manuscripts and editorial matters:** Animal Behavior Society, 402 N Park Ave., Bloomington IN 47408, USA. E-mail: aboffice@indiana.edu, Phone (812) 856-5541, Fax (812) 856-5542.

**Change of address, missing or defective issues:** Animal Behavior Society, 402 N Park Ave., Bloomington IN 47408, USA. E-mail: aboffice@indiana.edu, Phone (812) 856-5541, Fax (812) 856-5542.

## ABS OFFICERS

### 2008-2009 ABS OFFICERS

**President:** Molly Morris, Department of Biological Science, Ohio University, Athens, OH 45701, USA. Phone: (740) 593-0337, E-mail: morrism@ohio.edu.

**First President-elect:** Mike Ryan, Section of Integrative Biology C0930, 1 University Station, University of Texas, Austin, TX 78712, USA. Phone: (512) 471-5078, E-mail: mryan@mail.utexas.edu.

**Second President-elect:** Susan Foster, Department of Biology, Clark University, 950 Main St., Worcester, MA 01610-1473, USA. Phone (508) 793-7204, E-mail: sfoster@clarku.edu.

**Past President:** Gerald Wilkinson, Department of Biology, University of Maryland, College Park, MD 20742, USA. Phone: (301) 405-6942, E-mail: wilkinso@umd.edu.

**Treasurer:** Jim Ha, Department of Psychology and National Primate Research Center, Box 357330, University of Washington, Seattle, WA 98195-7330, USA. Phone: (206) 543-2420, E-mail: jcha@u.washington.edu.

**Secretary:** Regina H. Macedo, Departamento de Zoologia, Universidade de Brasília, Brasília, DF 70910-900 Brazil. Phone: (+55-61) 3307-2265, E-mail: rhfmacedo@unb.br.

**Program Officer:** Diana Hews, Department of Ecology and Organismal Biology, Indiana State University, Terre Haute, IN 47809, USA. Phone: (812) 237-8352, E-mail: dhews@indstate.edu.

**Junior Program Officer:** Dario Maestriperi, Evolutionary Biology and Neurobiology, The University of Chicago, 5730 S. Woodlawn Ave., Chicago, IL 60637, USA. Phone: (773) 834-4104, E-mail: dario@uchicago.edu.

**Parliamentarian:** Sue Margulis, Committee on Evolutionary Biology, University of Chicago, Culver Hall 401, 1025 E. 57th Street, Chicago, IL 60637. Phone: 773-702-8940 E-mail: margulis@uchicago.edu

**Executive Editor:** Michael Breed, Department of Ecology and Evolutionary Biology, University of Colorado, CB 334, Boulder, CO 80309-0334, USA. Phone: (303) 492-7687, E-mail: michael.breed@colorado.edu.

### Members-at-Large:

John Eadie, Department of Wildlife, Fish & Conservation Biology, University of California, Davis, CA 95616, USA. Phone: (530) 754-9204, E-mail: jmeadie@ucdavis.edu.

Alex Basolo, School of Biological Sciences, Behavioral Biology Group, University of Nebraska, Lincoln, NE 68588-0118, USA. Phone: (402) 472-2720, E-mail: basolo@cricket.unl.edu.

Jeff Podos, Department of Biology, Morrill Science Center, University of Massachusetts, Amherst, MA 01003, USA. Phone: (413) 545-0847, E-mail: jpodos@bio.umass.edu.

**Historian:** Lee Drickamer, Department of Biological Sciences, Northern Arizona University, Flagstaff, AZ 86011-5640, USA. Phone: (520) 523-0388, E-mail: Lee.Drickamer@nau.edu.

## ABS STANDING COMMITTEE AND SUBCOMMITTEE CHAIRS 2008-2009

If you would you like to volunteer for one of the society's active committees listed below contact ABS President Molly Morris, Department of Biological Science, Ohio University, Athens, OH 45701, USA. Phone: (740) 593-0337, E-mail: morrism@ohio.edu.

**Animal Care:** Todd M. Freeberg, Department of Psychology, University of Tennessee, 301B Austin Peay Building, Knoxville, TN 37996, Phone: (865) 974-3975, E-mail: tfreeber@utk.edu

**Web Page Revisions:** Shan D. Duncan, Indiana University, c/o Animal Behavior Society, 402 N. Park Ave, Bloomington, IN 47408, USA. Phone: (812) 856-5541, E-mail: sdduncan@indiana.edu

**Conservation:** Colleen Cassady St. Clair, Behavioural Ecology and Conservation Biology, Department of Biological Sciences, University of Alberta, Edmonton, Alberta, Canada T6G 2E9, Phone: (780) 492-9685, E-mail: cstclair@ualberta.ca

**Nominations:** Gerald Wilkinson, Department of Biology, University of Maryland, College Park, MA 20742 USA. Phone: (301) 405 6942, E-mail: wilkinso@umd.edu

**Education:** Becky Talyn, College of Natural Science, California State University, San Bernardino, CA 92407, USA. Phone: (909) 880-5000, Ext. 3671, E-mail: btalyn@csusb.edu

**Film:** Marianne S. Engle, Department of Psychology, Muskingum College, 163 Stormont Street, New Concord, OH 43762. Phone (740) 862-8353, E-mail: mengle@muskingum.edu

**Issues in Applied Animal Behavior:** Stephen Zawistowski, Certified Applied Animal Behaviorist, Executive Vice President, National Programs and Science Advisor, ASPCA, 110 Fifth Avenue, 2nd Floor, New York, NY 10011, Phone: (212) 876-7700, Ext. 4401, E-mail: stevez@aspc.org

**Development:** Jennifer A. Clarke, School of Biological Sciences, University of Northern Colorado, Greeley CO 80639 (970) 351-2453, E-mail: Jennifer.Clarke@unco.edu

**Public Affairs:** Colette St. Mary, Dept. of Zoology, University of Florida, Gainesville, FL 32611-8525, (352)392-1636, E-mail: stmary@zoo.ufl.edu

**Board Professional Certification Subcommittee:** John C. Wright, Psychology Department, Mercer University, 1400 Coleman Ave., Macon, GA 31207, Phone: (478) 301-2973, E-mail: wright\_jc@Mercer.edu

**Latin American Affairs:** Rogelio Macias-Ordenez, Departamento de Biología Evolutiva, Instituto de Ecología, A.C., Apartado Postal 63, Xalapa, Veracruz 91000, Mexico, Phone: 52228 8 421800, Ext: 3014, E-mail: rogelio.macias@inecol.edu.mx

**Diversity:** Zuleyma Tang-Martinez, Whitney R. Harris World Ecology Center, B216 Benton Hall One University Boulevard, St. Louis, MO 63121-4400 USA, (314)516-6203, E-mail: zuleyma@umsl.edu

**Membership Committee:** Kaci Thompson, College of Life Sciences University of Maryland, College Park, Maryland 20742, E-mail: kaci@umd.edu

## CALL FOR SYMPOSIA

### 2010 ABS MEETING Organizing Symposia and Paper Sessions

To organize a symposium, an invited paper session, or a workshop for the ABS Annual Meeting, you should

contact the Senior or Junior Program Officers to discuss your ideas. We will first make sure that there are no potential conflicts with the topic that you are considering. Then we will ask you to prepare a pre-proposal and submit it to the Junior Program Officer. Organizers often find that consultations with the Program Officers are helpful when drafting the pre-proposal. The pre-proposal should be a page or two summarizing your intent for the session, and suggesting potential participants.

A symposium should be a profound and stimulating review of an important subject area that currently is a major focus of research. It should be a thorough treatment of past work and current research advances, and should be of general interest to the majority of ABS members. An invited paper session is a special grouping of papers that focus upon empirical results relating to a particular topic. Usually there is no all-encompassing historical-theoretical perspective, although the organizer(s) may wish to summarize the individual papers or arrange them according to some theme.

Pre-proposals for the 2010 meeting are due before the annual meeting in Brazil in 2009 and will be circulated to the Executive Committee prior to the Annual Meeting and then discussed at the EC meeting.

The 2010 meeting is scheduled for 25-31 July. The JPO encourages potential organizers to begin discussions about proposals for that conference. Further information can be found on the ABS website or by contacting the ABS Program Officers: Dario Maestriperi, Evolutionary Biology and Neurobiology, The University of Chicago, 5730 S. Woodlawn Ave., Chicago, IL 60637, Phone: (773) 834-4104, Email: dario@uchicago.edu, and Diana K. Hews, Department of Ecology & Organismal Biology, Indiana State University, Terre Haute, IN 47809, Phone: (812) 237-8352, Fax: (812) 235-2526; Email: dhews@indstate.edu.

### SYMPOSIA FOR THE 2010 AAAS MEETING

ABS is striving to expand awareness of its excellent science via symposia for the annual AAAS meeting. The target date for the next symposium is 2010. Anyone interested in organizing a symposium for the meeting please contact Dario Maestriperi, E-mail: dario@uchicago.edu.

### CALL FOR RESOLUTIONS

Resolutions that deal with timely and substantive political or social issues that members wish to submit

for the consideration of the ABS membership should be submitted by 1 June, 2009. Submitted resolutions should provide direction to the ABS President to facilitate prompt action and will be evaluated by the Public Affairs Committee for appropriateness. Resolutions will be voted on at the annual business meeting in Pirenópolis, Brazil. Approved resolutions reflect the views of the Animal Behavior Society membership and are sent to the appropriate external agencies, organizations, or to the general public. Send questions to Molly Morris, Department of Biological Science, Ohio University, Athens, OH 45701, USA. Phone: (740) 593-0337, E-mail: [morrism@ohio.edu](mailto:morrism@ohio.edu).

### **GENESIS AWARD POSTER**

### **COMPETITION REMINDER**

The Genesis Award, first presented at the 2000 meeting, was created to encourage undergraduates from academic institutions of all sizes to participate in research and present their findings in a professional forum. Please note that undergraduates who submit posters for presentation at the annual meeting of the Animal Behavior Society are automatically entered in the Genesis Award poster competition *unless they select not to be* when they submitted their abstract. Judging criteria include significance of the research topic, research methodology, research results, and presentation. Presentation encompasses the student's oral discussion with the judges and the poster itself, including clear statements of the question and results, demonstration that there has been appropriate literature review, good organization, and visual appeal. Students should be prepared to demonstrate a mastery of their subject material. A complete set of judging criteria can be found at the ABS Education Committee website, under Career Development.

### **2009 FOUNDERS' MEMORIAL POSTER**

The 2009 Founders' Memorial Poster Award will be presented in honor of George Barlow (1929-2007). The Founders' award is given to the best poster paper in the Founders' poster session at the annual meeting and is open to all members of the Society in good standing. To join that session (and thus receive consideration from the judging panel), you must have indicated your interest on the registration form for the scientific program.

## **ANNOUNCEMENTS**

### **LATIN AMERICAN MEMBERSHIPS**

At the August 2005 ABS Executive Committee Meeting in Snowbird, Utah, a new initiative was approved to aid with recruitment of Latin American faculty and students. This endeavor involves contributions from ABS Members to a fund that will be maintained at the Central Office. Each year, the Membership Committee will fund a certain number of new subscriptions from the fund (depending upon contributions). Student Developing Nations memberships are \$19 (for paper journals) or \$10 (for online journal access only). Faculty rates are \$24 (for paper journals) and \$15 (for online access only). With the assistance of Regina Macedo, the Membership Committee has already compiled a list of 60+ students who would like to join the ABS. We ask that you consider making a contribution to the Latin American Membership Fund (checks made out to Animal Behavior Society with appropriate notation for this fund). Please send your contribution to the ABS Central Office, 402 N. Park Ave Bloomington, IN, 47408, noting that your gift is for this program. THANKS in advance to all who contribute -- this sort of endeavor is exactly what we, as a society, have decided to make a high priority. If you have questions, please contact Kaci Thompson by e-mail at [kaci@umd.edu](mailto:kaci@umd.edu).

### **TURNER AWARD FOR UNDERGRAD TRAVEL TO ABS AT PIRENÓPOLIS**

The ABS Diversity Committee has once again been awarded funding from the National Science Foundation to bring a diverse group of undergraduates to the Annual Meeting. You can learn more about the travel award and Charles H. Turner at the following site: <http://www.indiana.edu/~animal/Turner/>. We need your help to make sure that these students get the most that they can out of the experience. If you are coming to the Brazil meetings, please consider volunteering to serve as a mentor (via email to [emartins@indiana.edu](mailto:emartins@indiana.edu)).

### **CELEBRATE THE YEAR OF SCIENCE**

2009 has been designated the *Year of Science* by the Coalition on the Public Understanding of Science (COPUS) because it coincides with the anniversary of a number of important events in the history of science, including the 150th anniversary of the publication of

*On the Origin of Species* and the 200th anniversary of the birth of its author, Charles Darwin; the 200th anniversary of the birth of Abraham Lincoln, founder of the National Academy of Sciences; the 400th anniversary of the publication of Johannes Kepler's first two Laws of Planetary Motion; and the 400th anniversary of Galileo's first use of a telescope to study the universe.

COPUS (Sheri Potter, Senior Associate of AIBS, is COPUS Network Project Manager) is preparing to shine the national spotlight on science in 2009 and beyond. Established in 2007, COPUS is making plans now to celebrate the Year of Science 2009 (YoS09). The goal of this national, year-long celebration of science is to engage the public and improve public understanding about the nature and process of science. COPUS is a grassroots network -- composed of more than two hundred participating organizations representing universities, scientific societies, science centers and museums, government agencies, advocacy groups, media, educators, businesses, and industry -- formed in response to recent concerns about national scientific literacy

In concert with the formation of the national coalition, regionally based hubs are forming in communities from coast to coast, including a tenth regional hub that recently formed in Boulder, CO. "I see this regional hub as a way for me to connect with others in my community, to leverage resources in support of public outreach, and [to be] sharing of the joy and wonder of the science I am exposed to every day in my work," said Chris McLelland who is serving as liaison for the Boulder hub to the national network.

COPUS participants are crossing traditional scientific disciplinary boundaries and partnering with others within their communities to develop activities, programs, and special events in support of Year of Science 2009. By working together to coordinate programs and events that explore the overarching YoS09 theme, "How we know what we know," COPUS participants are aiming to engage the general public in dynamic ways that will make science personally meaningful and locally relevant.

YoS09 activities being developed include:

- Free public lectures and programs at museums and science centers;
- Opportunities to spend a day with a scientist or participate in a research project;
- Roundtable discussions about important local science issues;
- Connecting COPUS-affiliated scientists with the K-12 community;
- Creating local science cafés; and
- Radio spots, editorials, and online resources that

highlight the nature and process of science.

In addition to ongoing public understanding of science activities, participants are registering their YoS09 events in the COPUS Program and Resource Directory where members of the public can search for resources and activities by topic, interest, audience, date, and location. Web 2.0 tools are being developed to help improve the utility of this community directory by making it accessible via interactive online bumper stickers.

For more information about COPUS and the Year of Science 2009, please visit the following websites: [www.copusproject.org](http://www.copusproject.org), [www.yearofscience2009.org](http://www.yearofscience2009.org), <http://blogs.aibs.org/copus/>.

***ABSnet***  
**THE ELECTRONIC MAIL NETWORK OF THE ANIMAL BEHAVIOR SOCIETY**

ABSnet provides a fast electronic forum for animal behaviorists, and others interested in the study of animal behavior, in a digest or newsletter form. ABSnet provides job announcements, requests for information, computer related news (virus and bug alerts), appropriate software and hardware reviews, and news of Society activities and business. ABSnet is not an interactive, listserv-type discussion group, but rather a moderated forum for the exchange of information of interest to animal behaviorists. The digest or newsletter does not replace the official Society newsletter sent to all Society members via regular mail. Questions? To SUBSCRIBE to ABSnet, go to <http://www.animalbehavior.org> and click on the News and Announcements link on the left, then on the Subscribe/Unsubscribe link under ABSNet and fill out the Web-based form. Links to post an article or view the archives are also available.

## MEETINGS

### ANIMAL BEHAVIOR SOCIETY ANNUAL MEETINGS

**2009:** 22-26 June, Pirenópolis, Brazil

**2010:** 25-31 July, The College of William and Mary, Williamsburg, VA

### OTHER U.S. MEETINGS

**2009: Society for Behavioral Neuroendocrinology, Annual Meeting, 24-27 June, Michigan State University, East Lansing, Michigan. Check the website: <http://www.sbne.org/>**

**2009: Society for the Study of Reproduction Annual Meeting**, 18-22 July, Pittsburgh, Pennsylvania. Check the site: <http://www.ssr.org>.

**2009: 1<sup>st</sup> International Entomophagous Insects Conference**, 27-31 July, Minneapolis, Minnesota. Check: [www.cce.umn.edu/conferences/entomophagous](http://www.cce.umn.edu/conferences/entomophagous)

**2010: SICB Annual Meeting**, 3-7 January, Seattle, Washington. Meeting will be held at the Sheraton Hotel and Washington State Convention and Trade Center.

**2010: American Association for the Advancement of Science (AAAS)**, 18-22 February, San Diego, California.

**2011: SICB Annual Meeting**, January, Salt Lake City, Utah.

**2011: American Association for the Advancement of Science (AAAS)**, 17-21 February, Washington, DC.

#### INTERNATIONAL MEETINGS

**2009: 31<sup>st</sup> International Ethological Conference**, 19-24 August, Rennes, France. For meeting information, see the conference website: <http://www.iec2009.univ-rennes1.fr>.

**2009: 12th European Society for Evolutionary Biology Congress**, 20-25 August, Torino, Italy. Check [www.eseb.org](http://www.eseb.org).

**2009: 7th Conference of the European Ornithologists' Union**, 21-26 August, Zurich, Switzerland. Check the website: [www.eou2009.ch](http://www.eou2009.ch)

**2009: 7th International Conference on Behaviour, Physiology and Genetics of Wildlife**, 21-24 September, Berlin, Germany. Check for details at: [http://www.izw-berlin.de/de/veranstaltungen/7th-IZW-Conference/7th\\_izw\\_conference.html\\_\\_](http://www.izw-berlin.de/de/veranstaltungen/7th-IZW-Conference/7th_izw_conference.html__)

**2010: 25<sup>th</sup> International Ornithological Congress**, 22-28 August, Campos do Jordão, Brazil. Additional details at <http://www.ib.usp.br/25ioc>.

**2010: 13<sup>th</sup> International Behavioral Ecology Congress**, 26 September-1 October, Perth, Australia. For meeting details, check the conference website: [www.isbperth2010.com](http://www.isbperth2010.com).

#### OPENING CONFERENCE ON COMPARATIVE SOCIAL COGNITION

The ESF Network of Comparative Social Cognition (COMPCOG) ([www.compcog.org](http://www.compcog.org)) is proud to announce its opening meeting in Budapest, 13-16 May 2009 (more information at [www.compcog.org](http://www.compcog.org))

Thanks to the support of leading scientists from around the world we have managed to put together an **exciting program** that covers many interesting areas of comparative social cognition with emphasis on **SOCIAL GENES, SOCIAL BRAIN AND SOCIAL MINDS**.

This is a call for scientists interested in the field to come to this meeting. There will be no registration fees, but participants have to cover their costs. For more information and sending applications contact: [esf.conference2009@gmail.com](mailto:esf.conference2009@gmail.com)

#### NOTICE TO DEVELOPING NATION SCIENTISTS PLANNING TO ATTEND ABS 2009

The Latin American Affairs Committee can provide letters of invitation to help scientists (faculty or students) from developing countries obtain travel funding from their universities in order to attend the ABS meeting in Brazil - 2009. If such a letter would be useful in helping you to obtain funding, please contact Zuleyma Tang-Martinez: [zuleyma@umsl.edu](mailto:zuleyma@umsl.edu) to request an invitation. Please provide your name and address, as well as the title or topic of the paper you will be presenting at the conference.

#### NOTICE!

Issues of the ABS Newsletter are published *first* on the ABS Web page. Hard copies of the Newsletter are delivered by mail and may take weeks to arrive. To get ABS news *fast*, point your browser to: <http://www.animalbehavior.org/ABS/Newsletters/Directory/dir.htm>.

#### OPPORTUNITIES

##### CALL FOR PROPOSALS – NESCENT SABBATICAL SCHOLARS, WORKING GROUPS AND CATALYSIS GROUPS

The National Evolutionary Synthesis Center (NESCent) is now accepting proposals for sabbatical scholars, working groups and catalysis meetings. Proposals for postdoctoral fellowships are accepted at the December 1 deadline only. Proposals for sabbatical scholars,



working groups and catalysis meetings are accepted twice a year, with June 15 and December 1 deadlines. Proposals for short-term visitors are considered four times a year, with deadlines on January 1, April 1, July 1 and September 1. For more information, check the website <https://www.nescent.org/science/proposals.php>.

### FIELD STUDIES OF ANIMAL BEHAVIOR

A 10-day course for students, teachers, museum docents, wildlife professionals, and nature enthusiasts:  
**July 15 - 25, 2009.**

Sponsored by: The Southwestern Research Station of The American Museum of Natural History.

Location: Chiricahua Mountains of southeastern Arizona.

Instructor: Dr. Howard Topoff, Professor Emeritus of Biopsychology, The City University of New York.

According to Conservation International, the sky islands of southern Arizona (which include the Chiricahua Mountains) contain some of the richest reservoirs of plant and animal life on earth. It is this outstanding biodiversity that attracts scientists (and their students) from all over the world. During this intensive field course, we will focus on the behavior of a variety of invertebrate and vertebrate species. Our studies will include:

1. The Adaptability of Behavior - color and odor preferences in the selection of nectar sources by hummingbirds.
2. Population Dynamics - the size of territory in harvester ants as a function of colony density.
3. Communication - the evolution of visual displays in lizards of the genus *Sceloporus*.
4. Social Behavior - orientation and communication in slave-making ants.
5. Mating Behavior - the role of auditory signals in mating behavior of spadefoot toads.
6. A survey of bats of the Chiricahua Mountains.

The course will include a daily multimedia lecture. Although most of the course will be devoted to class projects, we often are able to participate in research being conducted by scientists at the Research Station. We also attend evening seminars given by Station scientists. The course is limited to 15 participants. At the end of the course, the Southwestern Research Station will issue a Certificate of Completion. The cost of the course is \$950. This includes room and 3 meals for 10 days (\$600), and tuition (\$350). For additional information about the course including a biography of the instructor, please see the course web site at: <http://www.animalbehaviorcourse.com>

## DONATIONS TO ABS FUNDS

(Contributors listed in alphabetical order)

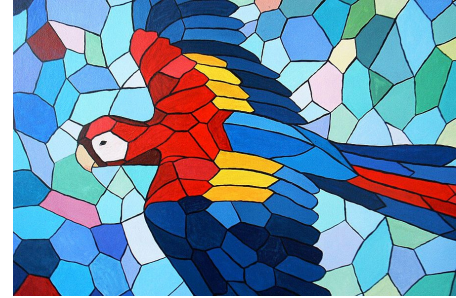
Charles I Abramson, Elizabeth Adkins-Regan, Dan Albrecht, John Alcock, Richard D. Alexander, Jeanne Altmann, Sofyan H. Alyan, Diana Andres, Terence R. Anthony, Mitchell B. Baker, Russell P. Balda, Gregory F. Ball, Paolo Baragli, Charles L. Baube, Carmen Bazua-Duran, Miles E. Becker, Michael D. Beecher, Miles Bensky, Carol M. Berman, Catherine R. Bevier, Christine R. Boake, Richard F. Braaten, Stephanie Nicole Braccini, H. Jane Brockmann, Lincoln P. Brower, Susan G. Brown, Tim Brown, David G. Browning, Richard Buchholz, Rebecca S. Burton, Ruth E. Buskirk, James Campanelli, Michelle Cawthorn, Martha Leah Chaiken, Michael J. Childress, Anne B. Clark, Mertice M. Clark, Ethan D. Clotfelter, Kristine Coleman, Nicholas E. Collias, Sylvia Corte, Richard G. Coss, Jeremy C. Crawford, Carolyn M. Crockett, Molly E. Cummings, Anne Danielson-Francois, Don C. Dearborn, Paula Raelyan Deaton, Roberto A. Delgado, Gregory E. Demas, Jill A. Devenport, Samuel L. Diaz-Munoz, Gary N. Dodson, Veronica A. J. Doerr, Christine Marie Drea, Lee C. Drickamer, Ian Dunbar, David W. Dunham, Peter O. Dunn, Teresa L. Dzieweczynski, William G. Eberhard, Daniel F. Eberl, Alison Egge, Robert S. Erdmann, William R. Evans, J. B. Falls, Susan M. Farabaugh, Meghan Fitzgerald, Roy Fontaine, Debra L. Forthman, Robin L. Foster, Susan A. Foster, Dorothy M. Fraszky, Gabriel Francescoli, Rebecca E. Frank, Barbara A. Frase, Todd M. Freeberg, Caitlin R. Gabor, Julie Christine Garvin, Sidney A. Gauthreaux, Victor J. De Ghatt, Robert M. Gibson, Lynn L. Gillie, Steven K. Goldsmith, Michael D. Greenfield, Jon E. Grinnell, Renee Robinette Ha, Sylvia L. Halkin, James F. Hare, Benjamin L. Hart, Tracy Herigstad, Laurie Hiestand, Peggy S. M. Hill, Elizabeth M. Hill, Travis M. Hinkelman, Matthew Robert Holdgate, Kay Ellen Holekamp, Teresa H. Horton, Richard D. Howard, Sarah K. Huber, Ma. del Carmen Huerta C., Lynne A. Isbell, Duane M. Jackson, Valerie G. James-Aldridge, Robert L. Jeanne, Jennifer Anne Jelincic, Stephen H. Jenkins, Paul Robert Jivoff, Rodney L. Johnson, Peter G. Judge, Isabel Curran Junkin, J. Eric Juterbock, Susan D. Kapla, Jessica Kenyon, John A. King, Nancy Klepper-Kilgore, Erich Klinghammer, Peter H. Klopfer, Rosemary Knapp, Stan Kuczaj, Allan Kugel, Lindy Langum, David B. Lank, Theresa M. Lee, Beth E. Leuck, Sara M. Lewis, Steven L. Lima, Susan U. Linville, Katharine Lofdahl, Cheryl A. Logan, Matthew Benjamin Lovern, Jeffrey R. Lucas, Michelle Lee Mabry, Scott A. MacDougall-Shackleton, Susan Weinberg Margulis, Ileri Brumon Martinez, Wm. Mitchell Masters, Jill Mateo, Jennifer A. Mather, Moira

C. Maxwell, Darryl J. Mayeaux, David B. McDonald, Roger L. Mellgren, Peter E. Midford, Susan Milius, Patricia D. Moehlman, Ricardo Mondragon-Ceballos, Ignacio Moore, Kineta Lynn Morgan-Paisley, Lynn J. Moseley, Dietland Müller-Schwarze, Roberto Munguia-Steyer, Melissa Nelson, Mark T. Nolen, Steve Nowicki, Scott Nunes, Kara Nuss, Dara N. Orbach, Gard W. Otis, Donald H. Owings, Brian G. Palestis, Susan E. Parks, Gail Lisa Patricelli, Sergio M. Pellis, Alfredo Vicente Peretti, John B. Phillips, Richard E. Phillips, Alexander K. Piel, Jennifer Pokorny, Denise S. Pope, Diane M. Post, Edward O. Price, Anne E. Pusey, David C. Queller, Alejandra Ramos-Gonzalez, Jan A. Randall, Juliana Rangel-Posada, Linda S. Rayor, Steve Rebach, Pamela J. Reid, Carolyn A. Ristau, Juan Carlos Riveros, Katherine Robertson, Donelle Robinson, Christina Rockwell, Rafael L. Rodriguez, William Rogers, Stephen I. Rothstein, Matthew P. Rowe, Ronald L. Rutowski, Scott K. Sakaluk, Michael Salmon, Abby L. Schwarz, Michelle Pellissier Scott, Michael Seres, Katherine A. Shaw, Paul W. Sherman, Kelly Lynne Smith, Darlene A. Smucny, Charles T. Snowdon, Jill A. Soha, Michelle J. Solensky, Robert B.

Srygley, Judy A. Stamps, Linda L. Stehlik, Philip K. Stoddard, Anita Stone, John P. Swaddle, Ronald R. Swaisgood, Larissa Swedell, Zuleyma Tang-Martinez, Keith A. Tarvin, Maria Thaker, Roger K. R. Thompson, Michael K. Tourtellot, Alice Trattner, Stephen T. Trumbo, Russ VanHorn, Jill A. Villarreal, Victoria L. Voith, Frans De Waal, Charles Walcott, Richard J. Wallace, Megan A. Wallrichs, Carolyn J. Walsh, Jeffrey R. Walters, Douglas Wartzok, Peter M. Waser, Jason V. Watters, Emily Weiss, Amanda Wendt, Mary Jane West-Eberhard, Angela M. White, Linda A. Whittingham, Daniel Dean Wiegmann, R. Haven Wiley, Gerald S. Wilkinson, Kate E. Williamson, David Sloan Wilson, Richard H. Wilson, Tammy L. Windfelder, John Charteris Wingfield, Jamie C. Winternitz, Sharon C. Wirant, Brian D. Wisenden, Sarah K. Woodley, Amy Worthington, John C. Wright, Timothy F. Wright, Matthew A. Wund, C. Miriam Yarden, Harald Yurk, Stephen L. Zawistowski, Denise L. Zielinski, Joseph Zoline-Black, Marlene Zuk

# Brazil 2009

## 46<sup>th</sup> Annual Meeting of the Animal Behavior Society, 22-26 June, 2009



Art by Roberto Perez-Franco

The 2009 ABS meeting will be held in Pirenópolis, Brazil, a small historical town located in the central region of the country, approximately 1.5 hr from Brasília, the nation's capital. All conference activities will occur at the Pousada dos Pireneus hotel, which offers accommodation for over 200 people. There are many other options for accommodations in the town of Pirenópolis, ranging from more luxurious to one-room rentals to fit a student's budget, most of which are within walking distance of the venue. Pirenópolis also has many excellent restaurants and bars, all within short walks from the conference venue. Around town there are many attractions that provide interesting day excursions. Pirenópolis is particularly well known for its many options of ecotourism. These include numerous waterfalls, farms (fazendas) from the colonial period, ecological sanctuaries, adventure treks, mountain biking and horseback trails. At night a popular spot for dining is the *Rua do Lazer* (appropriately name "Leisure Street"). The strategic location of Pirenópolis in central Brazil provides a gateway to other regions of Brazil. This continent-sized country offers a bewildering number of fascinating possibilities, from the Amazon rain forest that occupies some 40% of the country to the Pantanal, the world's largest wetland region; from the sparkling white sand beaches of the northeast to the beauty of Rio de Janeiro, the city affectionately known by Brazilians as *Cidade Maravilhosa* (Marvelous City).



### Scientific Program Highlights

#### Featured Speakers:

Distinguished Animal Behaviorist Address: **Richard Dawkins** (Oxford University)

Keynote Speaker: **Daniel Rubenstein** (Princeton University)

Fellows Lecture: **Marlene Zuk** (University of California, Riverside)

## **Symposia:**

*Interacting Phenotypes: Applying Indirect Genetic Effects to Behavioral Ecology*

Organizers: **Heather Bleakley** (University of Exeter, Cornwall Campus) and **Steve Shuster** (Northern Arizona University)

*An Integrative Evaluation of the Production, Perception, Transmission, and Evolution of Color Visual Signals*

Organizers: **Marina Anciães** (Instituto Nacional de Pesquisas da Amazonia) and **Kevin McGraw** (Arizona State University)

*Beyond the Selfish Gene: Research Inspired by the Contributions of Richard Dawkins*

Organizers: **Gerald Wilkinson** (University of Maryland) and **Jane Brockmann** (University of Florida)

**Pre-conference Mini-Courses** (please check short course descriptions and professor biographies in the ABS webpage at: <http://www.animalbehavior.org/>):

*How to Become More Certain About Uncertainty: An Introduction to Biostatistics*

**Donald Blomqvist**, Göteborg University

*Coloration and Visual Communication*

**Stephanie Doucet**, University of Windsor

*Sibling Competition*

**Hugh Drummond**, Universidad Nacional Autónoma de México

*Behavioral Endocrinology: An Integrative Approach*

**Rui Oliveira**, Instituto Superior de Psicologia Aplicada, Portugal

*Sexual Selection*

**Marlene Zuk**, University of California, Riverside

## **Workshop**

*Teaching Animal Behavior*

Organizers: **Penny L. Bernstein** (Kent State University) and **Michael Noonan** (Canisius College)

## **Film Festival:**

The XXV Annual Animal Behavior Society Film Festival, Monday, 22 June and Tuesday, 23 June.

## Special Events

- An **opening reception** will be held on Monday evening, 22 June.
- There will be **two poster sessions**, and receptions will be held on the evenings of Wednesday, 24 June and Thursday, 25 June.
- A **Brazilian Party** with DJ, then live band *Cara Nova* and forró dancing organized by the Ispilicute group will liven things up on Thursday, 25 June, following the poster session.
- A **closing banquet** will be held Friday night, 26 June.
- Second annual **5K fun run!** Register (\$10) on the first day of the meeting (June 23<sup>rd</sup>) at the meeting reception desk. Contact Molly Morris (morrism@ohiou.edu) for further details.
- A **Silent Auction** will be held once again. Please bring items to Pirenópolis to donate to the auction: (1) Books on animal behavior, biology, ecology, conservation, applied animal behavior, etc.; (2) autographed books from ABS authors; (3) items with animal themes (t-shirts, jewelry, calendars, greeting cards, posters, etc.); (4) software useful for members (statistics, data collection, etc.); (5) videotapes for teaching or entertainment with behavior themes; (6) memorabilia from past ABS meetings and members (vintage artifacts); (7) animal photography; (8) animal artwork; (9) statistical consulting; (10) behind-the-scenes tour of a zoo, etc. Donated items will be placed on tables next to bidding forms, or described, if the item is not present.

## Registration for Meeting

Online registration and mail-in forms are available via a link from the ABS webpage at: <http://www.animalbehavior.org/>

Registration fees for 2009, as approved by the Executive Committee, are listed below (all prices in US dollars):

	<b>Early (US \$)</b>	<b>Late (after 17 April) (US \$)</b>
Full member developed country	180	255
Full member developing country*	130	130
Full non-member	275	350
Student non-member	275	350
Student	80	80
Guest/Spouse	80	80

(Children under 12, free with parent registration)

\* **The following are NOT considered developing countries:** The United States, Canada, Israel, Japan, Australia, New Zealand, Iceland, Norway, Sweden, Finland, Denmark, Germany, The Netherlands, Belgium, Luxembourg, France, The United Kingdom, Ireland, Switzerland, Austria, Italy, Spain, and Portugal.

## Registration for Mini-Courses

	Early (US \$)	Late (after 17 April) (US \$)
Member ABS	45	55
Student ABS member	35	45
Full non-member	50	60
Student non-member	45	55

## Lodging

Housing may be on site, in the Pousada dos Pireneus hotel (presently sold out), or in hotels around town. **Reservations at the Pousada dos Pireneus will be handled entirely by the staff of the hotel.** Lodging at the Pousada dos Pireneus includes a meals package (no option of lodging only). They will also handle reservations for other hotels, but there are dozens of other options in town (check the website).

## Food Options

The town of Pirenópolis is full of restaurants, coffee-shops and bars that range from relatively inexpensive (*comida a kilo* where you pay for the weight of your food, sandwich and pizza shops) to more expensive and formal dining options. Such options are available within a few minutes of walking from the venue site.

## Transportation

We will provide bus service directly from the Airport in Brasilia to Pirenópolis for passengers arriving June 21 and 22. The bus schedule is being organized according to flight arrival and departure times, and will be posted on the webpage as soon as it finalized. Bus service back to the Brasilia Airport will be available on June 27. The bus service (round trip) will cost R\$ 75 (75 reais). **Be sure to make your bus reservation with the congress venue ([www.pousadadospireneus.com.br](http://www.pousadadospireneus.com.br)).** You may also reserve a place in the bus even if you choose to book at a hotel not included in the list provided by the congress venue. Just contact Dalton at [dalton@msturismo.com.br](mailto:dalton@msturismo.com.br) or Regina at [rhmacedo@unb.br](mailto:rhmacedo@unb.br). If you arrive on another day or wish to depart at an earlier date, individual reservations can be made with a shuttle service, but this is much more expensive. In this case, contact Dalton at [dalton@msturismo.com.br](mailto:dalton@msturismo.com.br) or Regina at [rhmacedo@unb.br](mailto:rhmacedo@unb.br). Student volunteers will be at the airport to help direct you to the bus.

If you travel to Pirenópolis by car, use the map posted on the webpage for guidance. In the webpage we have also included information on commercial bus lines to Pirenópolis from Brasilia and Goiania.

## Visa

**U.S. citizens need a visa** to enter Brazil, as do citizens of several other countries. If you do not have a valid passport, it is a good idea to get one as early as possible, as it may

take some time. As a general rule, Brazil requests visas based on the principle of reciprocity of treatment given to Brazilian citizens, and this includes the cost for visa obtention. Citizens of some countries do not need a visa: check out which at [http://www.brazilsf.org/visa\\_by\\_country.htm](http://www.brazilsf.org/visa_by_country.htm). The standard tourist visa allows visitors to stay 90 days, extendable for another 90 within the country. For information on how to obtain a visa to Brazil visit: [http://www.brazilsf.org/visa\\_faq\\_eng.htm](http://www.brazilsf.org/visa_faq_eng.htm) . To obtain the addresses of Brazilian consulates and embassies world-wide, visit: <http://www.mre.gov.br/ingles/endereco/consulados.asp> or <http://www.abe.mre.gov.br/>

### **Things to Do**

If you don't want to leave the The Pousada dos Pireneus, the hotel has plenty to offer in terms of things to do. In addition to two swimming pools with water slide, it also has an official-size soccer field, tennis court and volleyball court. A walking trail within the property provides a place for walkers and runners to keep in shape, in addition to the availability of a small fitness center. Other hotels in town often count with swimming pools as well. We suggest venturing around town, both during the day and in the evening, and visiting the numerous local restaurants, bars, artists' studios and shops. Other activities include visits to the numerous waterfalls in the region, canopy walking, and bird watching in the surrounding nature sanctuaries. Descriptions of these day excursions are available in the webpage for the meeting.

But if your intention is to go far beyond the town of Pirenópolis to visit other places in Brazil, take the time to explore some of the options we offer as pre- or post-meeting excursions. We have organized seven package tours to exciting destinations that are well-known touristic destinations within Brazil, from the extreme northern jungles of the Amazon, to the beaches along the coast, to the extreme southern borders of Brazil. They have been pre-planned by MS Turismo, the travel agents in charge of our meeting, and reservations can be made through their site ([www.msturismo.com.br](http://www.msturismo.com.br)) by entering the link for the ABS meeting and then clicking on the "Excursions Balloon". Specific questions can be answered by Dalton at [dalton@msturismo.com.br](mailto:dalton@msturismo.com.br) or by phoning him at (+55 61) 2101-7818 or 3321-3694. Get together with a few friends and plan to visit one of these destinations! The dates can be arranged according to availability and prices will vary according to the period of the trip.

### **Bird Watching**

We will have guided birding tours during the ABS meeting in Pirenópolis for avid bird-watchers. Tours will occur in and around Pirenópolis during the mornings before the talk sessions begin (around 6:00 to 8:00 am). Groups are limited to 15 people and will cost \$10 per person. Payment can be made on site to the tour guides.

Our guides are experienced Brazilian graduate students from the Universidade de Brasilia who work with birds and behavior and are bilingual. We have three tour guides: Lilian Manica, Raphael Dias and Daniel Gressler.

The number of tours and dates will depend upon the number of participants and their preferences. Bring your own binoculars. The suggested bird book to bring along for this region of Brazil is Tomas Sigrist's bilingual *Guia de Campo: Aves do Brasil Oriental / Birds of Eastern Brazil*. The second volume, *Guia de Campo: Aves da Amazonia Brasileira / Birds of Amazonian Brazil* may include additional birds not found in the first volume.

To register for a tour, please send the following information to Lilian Manica (lilianmanica@gmail.com): Name, E-mail address and preferred day for tour (Monday, 22 June to Friday, 26 June).

If you'd like to check out other cool books about Brazil's wildlife, visit the webpage [http://www.nhbs.com/newslet/web\\_email.php?ad\\_id=399](http://www.nhbs.com/newslet/web_email.php?ad_id=399).

### **Child Care**

Privately arranged child-care may be available by hiring university students. Please contact the meeting organizers if you are interested in making arrangements.

### **Immunizations**

Take as many as you like (see the webpage for details), but the single immunization we strongly recommend is the yellow fever vaccination, taken AT LEAST 10 days before you travel.

### **For Further Information**

Please go to the Animal Behavior Society website ([www.animalbehavior.org](http://www.animalbehavior.org)) or, if all else fails, contact the Designated Host Regina Macedo by e-mail ([rhfmacedo@unb.br](mailto:rhfmacedo@unb.br)) or phone (+55-61) 3380-2410 and (+55-61) 9115-1117.

Online registration and mail-in forms will be available at the ABS website <http://www.animalbehavior.org/Brazil09>