

NEWSLETTER

Animal Behavior Society

Vol. 31, No. 4
November, 1986
A quarterly publication

Terry Christenson, ABS Secretary
Jay Hansche, Associate Editor, ABS Newsletter
Department of Psychology, Tulane University, New Orleans, LA 70118

ABS ELECTION RESULTS

A total of 264 members voted (10.2% of the membership) compared to 11.3% in 1985 and 17.2% in 1984. The proposed Constitutional amendment passed. This establishes two new standing committees, an ethics committee and a committee concerned with issues relevant to applied animal behavior. In addition, three officers were elected; they will take office 27 June 1987. The first two will serve concurrently as officers in the Division of Animal Behavior, American Society of Zoologists.

Second President-Elect: Patrick Colgan

Secretary: David Chiszar

Member-At-Large: Julia Chase

1986 ABS FINANCIAL REPORT

Beginning Balance	133,129
Revenue Received:	
Membership Dues-	
regular	44,483
student and emeritus	15,032
spouse	495
Interest Income	11,672
Membership Labels	2,228
Subscriptions	1,080
Graduate Programs in Behavior Pamphlet	494
Return from Editor's Account	3,285
Return from NCSU Annual Meeting	5,955
Late Fees	1,210
Other Sources	2,162
Total Revenue Received	88,096
Expenditures:	
Journal Publication	31,980
Editor's Expenses	35,542
Treasurer	10,461
Secretary	4,749
Program Officer	3,077
Education Committee	10,308
Film Committee	567
Animal Care Committee	68
First President-Elect	65
Second President-Elect	250
AIBS Dues	1,063
Total Expenditures	98,129
Ending Balance (June 30, 1986)	123,096
--Submitted by H. Jane Brockmann, ABS Treasurer	

1987 ABS NATIONAL CONVENTION

This issue includes registration forms on PAGES 7 and 8 and abstract transmittal forms on PAGES 11-13 for the 1987 meetings to be held at Williams College. Keynote speakers: Mimi Halpern (Downstate Medical Center, Brooklyn) and Linda Partridge (Dept of Zoology, University of Edinburgh).

ABS MIDWEST REGIONAL MEETING

The Midwest regional meeting will be held 10-12 April 1987 at Eastern Illinois University. Contact Kipp Kruse, Dept Zoology, Eastern Illinois Univ, Charleston IL 61920.

CAPRANICA FOUNDATION AWARD IN NEUROETHOLOGY

The Foundation was established in 1986 by Robert R. and Patricia A. Capranica to recognize an outstanding achievement or future promise in neuroethology. The Foundation wishes to award a prize of at least \$500 for the most significant paper published during the preceding year in neuroethology. Candidates must be U.S. citizens and graduate students or recent postdoctorates. A letter of nomination and three copies of the publication to be considered must be received by 1 March 1987. A panel of neuroethologists will select the most worthy candidate. Inquiries to The Capranica Foundation, c/o The Tompkins County Trust Company, Box 460, Ithaca NY 14851.

NEW AD HOC ABS AWARDS COMMITTEE

A committee to consider additional ABS awards for various achievements has been established. Suggestions are welcome and should be sent to the Committee Chair, George Barlow, Dept Zoology, Univ of California, Berkeley CA 94720.

JEMEZ SPRINGS SYMPOSIUM

Call for papers for "Adult Human Sexual Behavior with Children and Adolescents", 29 June to 3 July, 1987, Jemez Springs NM. International Society of Human Ethology invites the submission of pertinent papers containing data and theory. Papers on nonhuman species having human implications are encouraged. Day one addresses descriptive, historical, anthropological, biopolitical, and demographic background. Days two-five address evolution, development, function, and cause. Twenty scholars will be invited as guests of the sponsor. An additional twenty five submitted papers will be selected by the ISHE Executive Committee. Send inquiries or abstract (under 400 words) to Jay R. Feierman, Dept of Research and Education, Vista Sandia Hospital, 501 Alameda Blvd, NE, Albuquerque, NM 87113, (505) 823-2000. Deadline for receipt is 15 Jan 1987.

OPPORTUNITIES

ABS ANIMAL CARE COMMITTEE NEWS

FIELD ASSISTANT- 1 Jan to 1 Aug in southern Texas to assist in collection of field data to interface with modeling of deer movements using artificial intelligence techniques. Familiarity with radio-tracking, field observations, and vegetation sampling desirable. Send resume and letter of application by 15 Nov to Jane M. Packard, Dept Wildl Fish Sci, Texas A&M Univ, College Station, TX 77843.

FIELD RESEARCH ASSISTANTS- 15 March to 15 June in Washington state to assist with long-term ecological/behavioral study of blackbirds. Monitoring breeding behavior of individual birds, trapping and banding, helping with behavioral experiments, and taking blood samples. Send resume and one or two letters of recommendation to Les Beletsky, Dept of Zoology, NJ-15, Univ of Washington, Seattle WA 98195.

FIELD RESEARCH ASSISTANTS- May to June in Minnesota and Saskatchewan to study the breeding biology of polyandrous birds (phalaropes and spotted sandpipers). Housing provided but conditions are isolated and physically taxing at times. Salary \$600-700 per month depending on experience. Graduate positions for work in steroid analysis/avian social systems are available. Contact Lewis W. Oring or Albert J. Fivizzani, Dept Biology, Univ of North Dakota, Grand Forks ND 58202.

ASSISTANTS NEEDED- August to December in Papua New Guinea to study the behavioral ecology of birds of paradise. Behavioral observations and radio telemetry; work is strenuous and in very remote areas. All expenses are paid, including round-trip airfare, but there is no salary. To apply send resume, statement of purpose, and two letters of reference to S. G. Pruett-Jones, Dept of Biology, Univ of California at San Diego, La Jolla CA 92093.

VOLUNTEER FIELD ASSISTANTS- Ten-week (approx) positions are available in a study of resource defense and sexual selection in the side-blotch lizard of uninhabited Isla San Pedro Martir, Gulf of California, Mexico. Study goes from 15 March to 1 June 1987. Living conditions are primitive and work can be physically demanding; subsistence will be provided. To apply send statement of interests, CV, and names and telephone numbers of two references to Diana Hews, Dept of Zoology, Univ of Texas, Austin TX 78712.

TRAINEESHIPS- The Ethology Graduate Program at the University of Tennessee announces the availability of pre- and postdoctoral NIH traineeships for the 1987-88 academic year. For further information and application forms write to Gordon Burghardt, Director Ethology Program, Biology Consortium, WLS-M303, Univ of Tennessee, Knoxville TN 37916.

AVIAN SEXUAL SELECTION: A SECOND CENTURY OF CONTROVERSY

A symposium to be hosted on 27 March by the Dept of Biological Sciences, Ohio Wesleyan Univ. Invited speakers include Sievert Rohwer, Donald Kroodsmma, Patricia Gowaty, Ken Yasukawa, and Stephen Pruett-Jones. Breaks, reception, buffet lunch, and dinner will provide opportunity for discussion among participants and with speakers. For further information contact the host, Edward H. Burt Jr., Dept of Biological Sciences, Ohio Wesleyan Univ, Delaware OH 43015, (614) 369-4431 ext 400.

APHIS, AALAC, DHHS, IACUCs! Are you as confused as I am?? Different federal agencies, overlapping regulations and recent changes in legislation have made it difficult to decide just exactly what regulations affect our research, what species of animals are covered, and exactly what we should be doing.

A 1986 report published by the federal Office of Technology Assessment helps to resolve this confusion. The 400 page publication is titled Alternatives to Animal Use in Research, Testing and Education. It is available for \$16 from the U.S. Government Printing Office, Washington, D.C. 20402 (OTA-BA-273). Although the title emphasizes alternatives to the use of animals, the report reviews the history and recent modification in U.S. federal legislation on animal research and clarifies what agencies are involved and their responsibilities. It also summarizes state and some foreign regulations including Canada and the United Kingdom.

The most important change in U.S. federal regulations which was included in the amendments to the Animal Welfare Act and the Health Research Extension Act is the requirement for institutional animal care and use committees (IACUCs) to oversee animal research at individual institutions. We urge ABS members to become active members of their local IACUCs or help to establish them. Even if your institution is not required to have an IACUC, a committee can be useful in providing peer consultation and protection for researchers.

An institution is required to have an IACUC if federally funded animal experimentation is done or if animals covered by federal regulations are purchased from out-of-state sources (interstate commerce). Determining what species are covered is somewhat difficult. The Animal Welfare Act defines an animal as follows: " 'Animal' includes any live or dead dog, cat, monkey (nonhuman primate mammal), guinea pig, hamster, rabbit, or any other warm-blooded animal, which is domesticated or raised in captivity or which normally can be found in the wild state, and is being used, or is intended for use, for research, testing, experimentation or exhibition purposes, or as a pet." Birds, rats, mice, horses and other farm animals are currently excluded by regulation. (From Alternatives to Animal Use in Research, Testing and Education, U.S. Govt. Printing Office, pp. 283-284.)

If your institution does not have an IACUC or if you would like to have an additional source to consult about procedures or issues that concern you, the ABS ACC is available for consultation by ABS members. Write the Chair of the ACC, describing the procedure that concerns you. This information will be circulated (anonymously if you so request) to the members of the ACC and a summary of their opinions sent to you in writing by the Committee Chair.

---Submitted by Janis Driscoll, ABS ACC Chair, Dept of Psychology, Univ of Colorado, Denver CO 80202.

NEW JOURNAL

An international journal devoted to animal sounds is to be launched early in 1987 by the British Library of Wildlife Sounds and the International Bioacoustics Council, subject to sufficient subscribers. Topics to include communication, bioacoustic research, sound recording techniques, recent bioacoustic publications, new equipment, IBAC symposia and news, and wildlife sound archives. A commitment is needed now, so if you are interested, please write to Ron Kettle, National Sound Archive, 29 Exhibition Rd, London SW7 2AS.

ANNUAL MEETING - ANIMAL BEHAVIOR SOCIETY - JUNE 1987

Submitting Registration Materials

For this year's Annual Meeting those persons submitting an abstract for a paper or poster presentation to be included in the meeting program must also submit their registration and payment by the February 14, 1987 deadline. This practice is customary with many other societies and has been adopted for the 1987 meeting by the ABS Executive Committee. Abstract and Transmittal forms are to be sent to the Program Officer, Dr. Susan Ricchert Department of Zoology, University of Tennessee, Knoxville, TN, 37916. Registration materials are to be sent to the Williams College address given at the top of the Registration Form.

Introduction/Highlights

This year's Annual Meeting will be held on the campus of Williams College, in Williamstown, Massachusetts, from 21 to 26 June. Williams College was founded in 1793 and has a strong reputation as one of the nation's finest liberal arts colleges. Williamstown is located in the northwest corner of Massachusetts, in the Berkshire Hills, including the Taconic and Hoosac Mountain Ranges. The present enrollment of Williams College is just over 2,000 students with majors in 22 fields and 11 interdepartmental programs. Within a short distance of Williamstown there are a variety of places of natural beauty and historical interest. Mt. Greylock, the highest point in the state (3491 ft) is 8 miles distant, the College's Hopkins Memorial Experimental Forest is just over a mile from the campus and the Mohawk Trail leads eastward from town toward Boston. In or near Pittsfield (22 mi) are the home of Herman Melville, the Hancock Shaker Village and the Berkshire Museum. The Sterling and Francine Clark Art Institute with its renowned collection of Renoirs, Homers etc. is 3 blocks from the College campus. There is also a well respected Williams College Museum of Art located next to the quadrangle where conferees will be housed. The conference will be held the week before the opening of the Tanglewood Music Festival, Saratoga Performing Arts Center and the Williamstown Theatre Festival for those planning a longer stay in the region.

The scientific program will include two Keynote Speakers and two Fellows Lecturers (to be announced in the February Newsletter), the Allee Award Competition, the Founders Memorial Poster Award Competition, contributed paper sessions and the evening poster/social/movie gatherings. There will be at least two symposia on the program. Carolyn Ristau and Peter Marler have arranged a session on 'Animal Cognition' and Steven Stringham has arranged a session on 'Adult Male Mammals: Non-Parental Social and Demographic Roles'.

Climate

Williamstown is located at an elevation of 750 feet, but is surrounded by mountains of 2500-3500 ft in elevation. The primary vegetation is mixed northern deciduous hardwood forest, although there are some stands of conifers. The daytime temperatures in June can range from 55 to 85°F, while nighttime lows will be 40-60°F. Thus the days can be chilly to moderately warm and the evenings generally will be cool. Shorts are often worn by the natives, even in the cooler weather, but for some people, sweaters and jackets should be carried as a contingency.

Travel to Williamstown

For those of you travelling by air, the closest airport is Albany County Airport at Albany, New York. We have arranged for The Travel Store (105 Spring Street; Williamstown, MA, 01267; Phone (413) 458-5786) to be the designated travel agent for this year's meeting. We have also arranged for USAir to be the designated airline. Those of you making your reservations through the Travel Store will be guaranteed the lowest airfare available from your city of origin to Albany regardless of which airline you use. Those who make their arrangements through The Travel Store and use USAir will receive a 50% discount from the normal economy fare (except for commuter flights). To take advantage of these special rates you will need to fly to Albany on June 20, 21 or 22 and depart from Albany on June 25, 26 or 27. Your ticket can be purchased at anytime prior to departure - there will be no penalty for changing a ticket or refunding it. The seats at these rates are capacity controlled. You should make your reservations as soon as possible to insure availability even though you don't purchase the ticket until several weeks prior to the trip. You may contact The Travel Store by using their toll-free number 1-800-225-5052 from outside Massachusetts and 1-800-221-3701 from within Massachusetts and ask for Trudy or Sandy. At the time you phone to do your booking you will be asked for a credit card number so that your ticket can be charged to the card. USAir allows seat selection 21 days prior to a departure. Your tickets

will be mailed to you at the address given by you unless other arrangements have been made. If you encounter any problems with this service, please do not hesitate to contact me directly and I will attempt to resolve the problem.

The Travel Store has also agreed to handle a shuttle bus service from the Albany County Airport to Williamstown on Sunday June 21 and from Williamstown to Albany on Friday and Saturday June 25 and 26. The bus will cost approximately \$20 for a roundtrip and \$12 for a one-way ticket. There will be a sign posted in the baggage claim area of the Airport to identify the shuttle service. For those of you who make your own reservations it will be particularly important to indicate arrival/departure plans if you wish to have an opportunity to use the shuttle bus. There is a place on the registration form to indicate your arrival and departure dates/times; please use this to help us in planning for the shuttle bus operations. We will notify all of those who provide flight information of the shuttle bus schedule. You can also hire a taxi to go from Albany to Williamstown - approximate cost \$40 one way. If you are likely to be using a taxi, try to make the trip with several other conferees.

There is direct bus service from Boston (Englander Coach Lines) and from New York (Bonanza Bus Lines) to the Williams Campus. Each of these companies operates 3 or 4 scheduled trips daily in each direction. There is also Amtrak rail service to Pittsfield (22 miles south of Williamstown) and to Albany (Rensselaer) from which there are taxis to Williamstown.

Parking

There will be sufficient free parking in designated lots on the campus for those who drive to the meeting. We will ask for the license plate number of the automobile at the time you check-in at Williams, for use by the Williams College Security.

Campus Housing

We have made arrangements for the conferees and guests to be housed in the Berkshire Quadrangle (consisting of 5 dormitories) and Morgan Hall, a nearby dorm. Most of the dormitory rooms at Williams are singles, though often arranged in suites of 3-to-5 rooms with a living room and toilet facilities. There will be approximately 40 doubles available for conferees - these will be allocated on a first-come, first-served basis. There will be no difference in the rates for single and double rooms. Each dormitory room will be provided with 2 sheets, a blanket, pillow and pillowcase, facecloths, towels, soap and cups. Please indicate on the registration form whether you wish to be in a smoking or non-smoking area of the dormitory. Dormitory space will be made available on the Saturday night preceding the conference and for the Saturday night after the conference for those who wish to take advantage of reduced airline fares. The cost of the dormitory room is included in the daily fee - see below. There are coin operated laundry facilities in five of the six dormitories and two dry cleaning/laundry establishments on Spring Street, 1/2 block from the dorms.

Off-Campus Housing

There are several motels and guest houses in the Williamstown area. The rates/night vary from about \$35 to \$85. The names and locations of some of the hotels/motels and guest houses include:

The Williams Inn (413) 458-9371	Four Acres Motel (413) 458-8158
Elwal Pines Motel (413) 458-8161	Cozy Corner Motel (413) 458-5677
Springs Motor Inn (413) 458-5945	Chimney Mirror Motel (413) 458-5202
1896 Motel (413) 458-8125	Jericho Valley Motel (413) 458-5406
Maple Terrace Motel (413) 458-8101	North Adams Inn (413) 664-4561
The Willows Motel (413) 458-5768	Northside Motel (413) 458-8107
The Glen 413 458-4607.	

The Williams Inn, Springs Motor Inn and Northside Motel are probably a bit more expensive, though the first and last of these three are right on the edge of the campus. The Glen is a small bed and breakfast near campus. The other motels are all 1-5 miles from campus, though several are within reasonable walking distance. If you'd like further advice on motels, please call me.

Camping

There are several good camping areas within 10 miles of the campus:

- Brodie Camp Grounds - Brodie Mountain Ski Area (413) 443-4754
- Clarksburg State Park (413) 663-3207
- Mohawk Trail State Forest no phone
- Mount Greylock State Reservation (413) 499-4262.

Meals

Breakfast, Lunch and Dinner will be served in the North Dining Room of Baxter Hall, the Student Union at Williams. This dining hall will be exclusively for our use. At lunch and dinner there are three entrees available, including one vegetarian entree and there is also a salad bar available at lunch and dinner each day. Normally all three daily meals, breakfast lunch and dinner, are included in the daily conference fee. We have arranged for two options for this conference; all three meals each day as with normal practice, or lunch and dinner only each day. You are asked to note on the registration form which of these options you prefer. Note that your preference is for the entire week! There is a snack bar in the Student Union (open 8:30 AM to 3:30 PM Monday through Friday) and there are several small restaurants on Spring Street near the dorms.

The Sunday picnic/barbeque (hot dogs, hamburgers, chicken) will be by ticket only (\$8); those wishing to purchase tickets should do so in advance with the registration form. Those desiring a vegetarian picnic at the same price should so indicate in the appropriate space on the registration form. For Sunday only the housing and meals have been separated as you all will not be here for breakfast or lunch and some will not be present in time to partake of the picnic.

The Wednesday banquet will be preceded by a cash bar cocktail hour. There will be limited seating for the banquet (250 can be accommodated). The cost of the banquet will be a surcharge (\$7.50) above the daily meal cost for dinner. Vegetarian entrees will be available at the banquet for those who indicate a preference for a vegetarian meal on the registration form. Those who do not attend the banquet will be given the regular dinner in another cafeteria in Baxter Hall that evening. Please sign up for banquet tickets on the registration form.

The Friday picnic (chicken, ribs) to close the meetings will be costed at a surcharge of \$4 over the daily dinner prices. Vegetarian meals will be available for the same surcharge. Order your tickets on the registration form

Daily Conference Fee

Williams College charges a daily conference fee that includes room, meals and a portion of the conference office fee. For these meetings that fee will be \$34/day for those who select the option to have breakfast and \$30/day for those who elect not to have breakfast. Cancellations up until Friday June 18 will result in a refund of these fees less a \$20 processing fee. Cancellations after that date will result in a refund less an amount equal to 3 days charges.

Field Trips/Tours

At present we have two field trips/tours planned, both of which will be available at no cost to conferees.

(1) Hopkins Memorial Experimental Forest - Williams College owns a 2200 acre forest that forms the northwesternmost piece of land in the State of Massachusetts and also includes contiguous property in neighboring Vermont and New York. The Forest includes an experimental lab, weather station, a complete watershed system, a variety of ecological habitats and a complete trail system for hiking. The entrance to the forest is located on Northwest Hill Road about 1.3 miles from the center of campus - this is a short drive for those with cars or a pleasant 25 minute walk for those on foot. We have arranged for guided tours of the Hopkins Forest and related facilities on Tuesday and Thursday afternoons starting at the entrance at 2 PM and returning to the campus by about 4:30 PM.

(2) The Clark Art Institute is located only 0.5 miles from the center of the campus - a short walk down South Street. We have arranged to have a gallery talk covering the permanent collection on Tuesday and again on Wednesday afternoon at 3 PM beginning at the main entrance.

If there is sufficient interest in these trips as noted from the check-offs on the registration form, then we may schedule additional visits to both locations on other days of the conference. We may also explore several other possible field trips and will make such information available to all of those who have submitted advanced registration.

Child Day Care

A list of qualified private babysitters will be available at the registration desk. The estimated cost for babysitting during the daytime will be \$3-\$3.50/hour. To help us plan please indicate on the registration form whether you will require this service.

Athletic Facilities

The Williamstown area is a jogger's/hiker's paradise with many backroads and trails (the Appalachian Trail passed through just east of the village). On campus there are ample fields for recreation as well as a gym with squash courts, racquetball court and possibly a swimming pool. There are also ample tennis courts available on a fee/hour basis and the Taconic Golf Club where there is a daily greens fee.

T-Shirts

After some consultation we have decided that the best way to provide T-shirts is to include one for each person as part of registration. Please indicate which size you would like (all cotton shirts) on the registration form. If you would like any additional shirts please also indicate the numbers and sizes of those shirts and include payment with the registration form to insure that they will be made up in time for the meeting.

Registration

Registration will take place on Sunday from 12 Noon until 9 PM, on Monday and Tuesday from 8 AM to 5 PM and on Wednesday from 8 AM to 1 PM in the Ballroom of Currier Hall, in the Berkshire Quadrangle. At registration conferees will receive a packet that contains maps, tickets, keys, abstracts, a name tag and lists of local restaurants and other attractions. Advance registrations must be received by Friday May 8 to qualify for the lowest rate. For cancellations, a refund, less \$20 for a processing fee, will be made up until June 11, 1987. After that date no refunds will be made for registration fees.

Conference Address/Telephone

During the course of the conference you may be reached by calling the Williams College Conference Office (413 597-2591) or by calling the Williams College Office of Security (413 597-2336). Your address will be c/o Williams College Conference Office, Weston Language Center, Main Street, Williamstown, MA 01267. My address is, Lee C. Drickamer, Biology Department, Williams College, Williamstown, MA 01267 and my telephone numbers are 413 597-2223 and 597-2890.



1987 ANNUAL MEETING OF THE ANIMAL BEHAVIOR SOCIETY
21 - 26 JUNE 1987, WILLIAMS COLLEGE, WILLIAMSTOWN, MASSACHUSETTS

CALL FOR PAPERS: A Transmittal Form and Abstract Preparation Form for contributed papers are included here. There are three types of contributed papers: 20 min (15 min for presentation and 5 min for discussion), 5 min papers and poster papers. ABS members may present or sponsor only one contributed paper at an Annual Meeting. When a member co-authors with a nonmember who is presenting, the member is sponsoring the paper. A member may also show one film and participate in an invited paper session or symposium in addition to giving or sponsoring one contributed paper. It is expected that the research reported at an Annual Meeting complies with all applicable laws concerning animal care and welfare. Transmittal and Abstract Forms as well as inquiries concerning the program should be directed to the ABS Program Officer, Susan E. Riechert, Zoology Department, University of Tennessee, Knoxville, Tennessee 37996-0810.

DEADLINE FOR RECEIPT OF ABSTRACTS --- 14 FEBRUARY 1987 - FIRM!
ONLY SUBMISSIONS ON THE PROPER FORM WILL BE ACCEPTED. NOTE ALSO THAT FOR THE 1987 MEETINGS ONLY, ABS IS REQUIRING THOSE WISHING TO BE ON THE PROGRAM TO PREREGISTER AT THE TIME OF SUBMITTING AN ABSTRACT. The registration forms are included in this issue of the Newsletter and should be sent directly to the local host, Dr. Lee Drickamer, Department of Biology, Williams College, Williamstown MA 01267.

POSTER PAPERS are highly recommended. Poster papers can facilitate more discussion, perusal of data and one-to-one exchanges of ideas. We will continue the evening format for the poster paper sessions in Williamstown. The ABS now sponsors a competition for the FOUNDERS AWARD FOR POSTER PAPERS. If you are planning a poster paper submission and wish to be considered for the award, please check the appropriate box on the transmittal form. ALL members of ABS presenting poster papers are eligible for the award. Details of the competition and some suggestions for what makes a good poster paper will be mailed to those in the competition.

FILMS: The ABS has two annual film awards. The Jack Ward Film Award is a cash award for the best film presented by a non-commercial film maker at an Annual Meeting. The ABS Film Award is a non-cash award for the best film presented by a commercial film maker at an Annual Meeting. We are looking for new and original films for each Annual Meeting. Please contact the Film Committee Chairperson regarding the submission of films: Dr. Patricia DeCoursey, Biology Department, University of South Carolina, Columbia, SC 29208 or telephone (803) 777-3934.

ALLEE AWARD: The W.C. Allee Award will be presented for the outstanding student paper at the 1987 Annual Meeting. Any independent student research that is unpublished at the time of submission for the competition is eligible for this cash award so

long as the student has not competed before and has not had the final defense of the doctoral dissertation prior to the preceding ABS Annual Meeting. All papers must be single authored. To compete send the Transmittal and Abstract Forms to the Program Officer by 14 February 1987, and four copies of a written version of the paper to Dr. John Fentress, Department of Psychology, Dalhousie University, Halifax, Nova Scotia B3H 4J1 Canada. The written manuscript must not exceed 7 pages of double-spaced typewritten text; it may include no more than 4 tables and figures and should be completed in the Animal Behaviour format. DEADLINE FOR RECEIPT OF WRITTEN TEXT IS 1 MARCH 1987.

INVITED PAPER SESSIONS: The deadline for submission of proposals for both invited paper sessions and symposia is 1 November 1986. Contact the Program Officer for additional information.

ADVANCED WARNING: At the request of many who have attended the past several ABS Meetings, it is the intention of the Program Office to enforce the original rule regarding 20 min contributed papers. Namely, 15 min are for the paper presentation and 5 min are for discussion. PLEASE PLAN ACCORDINGLY FOR THE 1987 MEETING! Please limit your oral presentation to 15 min and practice before to adhere to the limit. We were quite successful with this rule in Raleigh and Tucson!

ABSTRACT PREPARATION:

1. Abstracts will be photographed just as you submit them; you must follow the suggested format.
2. Abstracts should be typed in a 3" x 7" space, such as provided on the transmittal form. Letters should not touch the lines. Single space all typing, leaving no top or left margins.
3. Use an electric typewriter with a good ribbon; make neat corrections. Elite type (12 pitch) is preferred. Use black ink for symbols not on your typewriter. Be very wary of abstracts printed by dot matrix printers - they often do not reproduce well.
4. Your abstract should be organized as follows:
 - a. Title - use CAP's; check to make certain that Transmittal Form and Abstract titles match; when using a Latin name, please include the common name also; see example below.
 - b. Authors - include departmental and institutional affiliations.
 - c. Specific objectives - include a brief statement unless this is clear from the title.
 - d. Methods - include a brief description as necessary.
 - e. Results - provide a clear, specific summary of findings.
 - f. Conclusions.
 - g. Acknowledgements or References - as desired.

ABSTRACT TRANSMITTAL FORM: ANNUAL MEETING OF THE ANIMAL BEHAVIOR SOCIETY, 21 - 26 JUNE WILLIAMS COLLEGE WILLIAMSTOWN, MA

Return to: Susan E. Riechert, Zoology Department, University of Tennessee, Knoxville, Tennessee 37996-0810. Please type or print where appropriate on following form.

Title of Paper:

Author(s):

First Name Middle Last Name Institutional Affiliation
Initial

Mailing Address of presenting author:

Telephone Numbers:

Office: _____

Home: _____

ABS Membership of Presenting Author:

Regular Member of ABS _____ Student Member of ABS _____

Nonmember _____ Sponsored by _____

Visiting Foreign Scientist Engaged in Animal Behavior Research

Category of Paper to be presented (ABSTRACT REQUIRED OF ALL CATEGORIES)

20 minute paper _____ Symposium Paper _____

5 minute paper _____ Invited Paper Session _____

Poster Paper _____ Founders Award for Poster Papers _____

Allee Award Competition _____

WOULD YOU BE WILLING TO CHAIR A SESSION (PLEASE HELP!)?

Yes _____ No _____

(If so Telephone No. _____).

Please identify your paper according to animal group and principal subject by circling the appropriate categories. These are used by the Program Officer to assist in arranging the program.

Animal Group:	Humans	Carnivores	Crustaceans	Arachnids
	Ungulates	Rodents	Amphibia	Insects
	Other Mammals	Marine Mammals	Reptiles	Other Invertebrates
	Non-human Primates	Birds	Fishes	Molluscs

Subject:

Applied ethology	Genetics	Social Behavior:
Behavioral ecology	Learning	Agonistic
Biological rhythms	Methodology	Altruism/kinship
Communication	Natural History	Courtship/mating
Development	Orientation/navigation	Dominance
Physiology/neuroethology	Theory	Mate choice
Predator/prey	Self maintenance	Intrasexual competition
		Parent-offspring relations
		Play behavior
		Territoriality

None of the above categories seems appropriate. I would best categorize my paper as dealing with _____

I would prefer to have my presentation in a session arranged by:

subject _____ taxonomic group _____

VISUAL AIDS A 2" x 2" slide projector is provided for each session. What special equipment would you like to use (subject to availability)?

overhead projector _____ 16 mm movie projector _____

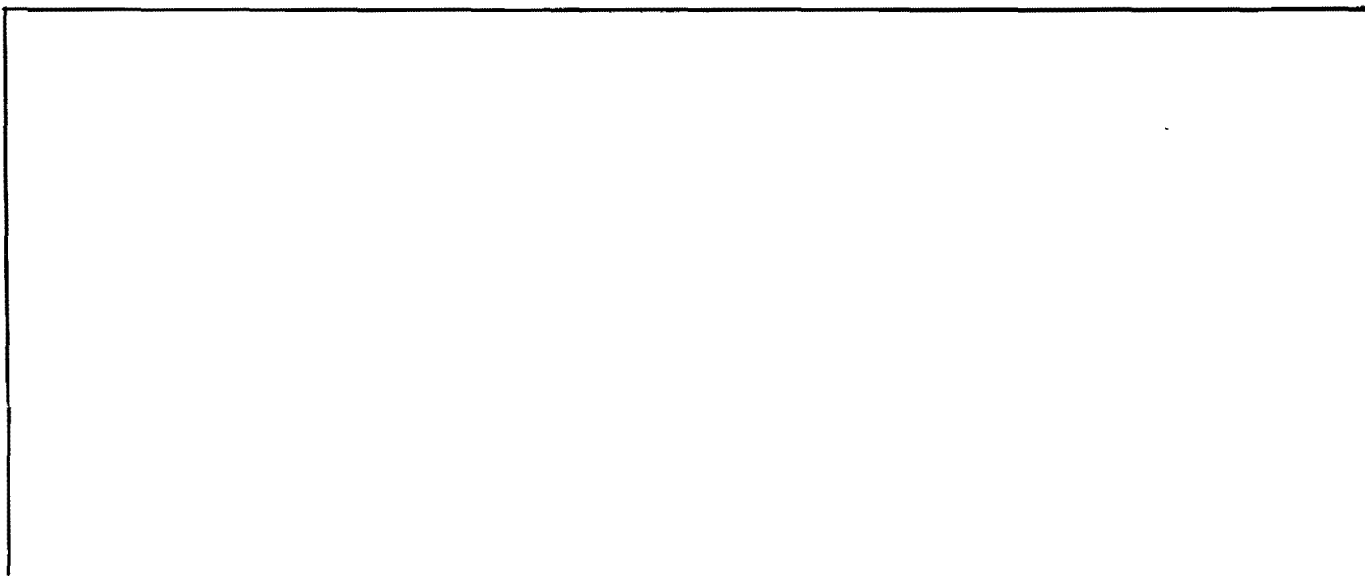
other (be very specific) _____

SEND TWO COPIES OF THE ABSTRACT AND ONE COPY OF THE TRANSMITTAL FORM TO THE PROGRAM OFFICER.

DEADLINE FOR ALL ABSTRACTS IS FEBRUARY 14, 1987!!!

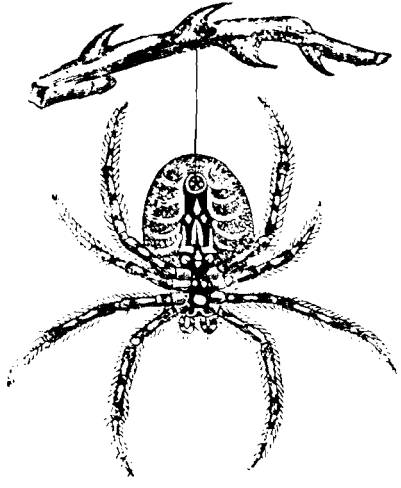
Ex. of title lines (follow this format):

DISPERSAL PATTERNS IN THE DWARF MONGOOSE (Helogale parvula)
Jon P. Rood, Smithsonian Conservation and Research Center, Front
Royal, Virginia



By submission of this Abstract to ABS I declare that the research reported herein was conducted in compliance with the ABS Animal Care Guidelines and all laws applicable to my work.

Signed



MEETINGS

ENTOMOLOGICAL SOCIETY OF AMERICA- 8-12 December, Reno NV. Contact William A. Allen, Dept of Entomology, Virginia Polytechnic Institute, Blacksburg VA 24061.

1986 ASZ MEETINGS- 27-30 Dec, Nashville. Contact Mary Adams-Wiley, ASZ, Box 2739, California Lutheran College, Thousand Oaks CA 91360.

AVIAN SEXUAL SELECTION: A SECOND CENTURY OF CONTROVERSY- 27 March, Ohio Wesleyan Univ. Contact Edward H. Burtt Jr., Dept of Biological Sciences, Ohio Wesleyan Univ, Delaware OH 43015.

1987 SIXTH BIENNIAL CONFERENCE ON THE ECOLOGICAL AND EVOLUTIONARY ETHOLOGY OF FISHES- 17-20 May, Lamar Univ. Contact David L. Bechler, Dept of Biology, Box 10037, Lamar Univ, Beaumont TX 77710.

CONFERENCE ON LABORATORY ANIMALS- 4-5 June, Chicago, "Animal pain: Its recognition, alleviation, and avoidance. Sponsored by the Scientists Center for Animal Welfare and The University of Chicago. Contact F. Barbara Orlans, 4805 St. Elmo Ave., Bethesda, MD 20814.

JEMEZ SPRINGS SYMPOSIUM- 29 June to 3 July, "Adult human sexual behavior with children and adolescents". Contact Jay Feerman, Dept of Research and Education, Vista Sandia Hospital, 501 Alameda Blvd. NE, Albuquerque NM 87113.

1987 ABS MEETINGS- 21-26 June, Williams College, Williamstown MA 01267.

1987 XXII INTERNATIONAL ETHOLOGICAL CONFERENCE 7-16 August, Madison WI. Contact Charles Snowden, Dept of Psych, Univ of Wisconsin, Madison WI 53706.

INTERNATIONAL CONFERENCE ON COMPARATIVE REPRODUCTION IN MAMMALS AND MAN- 23-26 Nov, Kenya. Contact R. Eley, Institute of Primate Research, PO Box 24481, Karen, Nairobi, Kenya.

AMERICAN SOCIETY OF ZOOLOGISTS

December 27-30, Opryland Hotel, Nashville TN. The ABS meets with the American Microscopical Society, Crustacean Society, International Association of Astacology, and the Society of Systematic Zoology.

Symposium: Energetics and Animal Behavior (28 Dec) organized by John L. Gittleman and Steven D. Thompson with talks by Gittleman & Thompson, G. Bartholomew, F. Carpenter & M. Hixon, D. Goldstein, P. Hertz & R. Huey, S. Riechert, M. Ryan, J. Kingsolver, and W. Hennemann.

Symposium: Habitat Selection and Evolution (29 Dec) organized by Michael L. Rosenzweig with talks by Rosenzweig, E. Vrba, C. Taylor, C. Istock, W. Rice, and W. Schaffer.

Other symposia: Science as a Way of Knowing- Developmental Biology; Phylogenetic Development of Self/Non-self Recognition; Nervous System Regeneration in Invertebrates; and Axial Movement: Biomechanics and Neural Control.

Animal Behavior Division contributed oral papers and posters are scheduled for 29 and 30 December. For information contact Mary Adams-Wiley, ASZ, Box 2739 California Lutheran College, Thousand Oaks CA 91360.

SYMPOSIUM PROPOSALS WANTED

If you are interested in organizing a symposium or invited paper session for an upcoming ABS meeting, contact the ABS Program Officer, Susan Riechert, Dept of Zoology, Univ of Tennessee, Knoxville TN 37916, (615) 974-6187. To organize a symposium for the 1988 San Francisco ASZ meetings, contact Mary Adams-Wiley, PO Box 2739, California Lutheran College, Thousand Oaks CA 91360.

ABS DIRECTION OF CORRESPONDENCE

ABS NEWSLETTER & general correspondence to the Society:
Terry Christenson, Dept of Psychology
Tulane University, New Orleans LA 70118

ANIMAL BEHAVIOUR--Manuscripts and editorial matters:
Charles Snowden, Dept of Psychology,
Univ of Wisconsin, Madison WI 53706

ANIMAL BEHAVIOUR--Missing issues; change of address:
Il. Jane Brockmann, Dept of Zoology,
Univ of Florida, Gainesville FL 32611

ABS OFFICERS

(* To assume office 27 June 1987)

PRESIDENT: Gordon Burghardt, Dept of Psych, Univ of Tennessee, Knoxville TN 37916

1st PRESIDENT-ELECT: Sidney Gauthreaux, Jr., Dept of Zoology, Clemson Univ, Clemson SC 29631

2nd PRESIDENT-ELECT: John Fentress, Depts Psych & Biol, Dalhousie Univ, Halifax, Nova Scotia, Canada B3H 4J1

*2nd PRESIDENT-ELECT: Patrick Colgan, Biology Dept, Queen's Univ, Kingston, Ontario, K7L 3N6 Canada

PAST PRESIDENT: Jeanne Altmann, Dept Conservation Biology, Chicago Zoological Park, Brookfield IL 60513

SECRETARY: (1984-87) Terry Christenson, Dept of Psychology, Tulane Univ, New Orleans LA 70118

*SECRETARY: (1987-90) David Chiszar, Dept of Psychology, Univ of Colorado, Boulder CO 80309

TREASURER: (1985-88) H. Jane Brockmann, Dept of Zoology, Univ of Florida, Gainesville FL 32611

PROGRAM OFFICER:(1986-89) Susan Riechert, Dept Zoology, Univ of Tennessee, Knoxville TN 37916

PARLIAMENTARIAN: (1986-89) Edward H. Burtt, Jr., Dept Zool, Ohio Wesleyan Univ, Delaware OH 43015

EDITOR: (1985-88) Charles Snowden, Dept Psychology, Univ of Wisconsin, Madison WI 53706

MEMBER-AT-LARGE: (1984-87) Joan S. Lockard, Dept Neur. Surgery, Univ Washington, Seattle WA 98195

MEMBER-AT-LARGE: (1985-88) Gail Michener, Dept Biol Sci Univ of Lethbridge, Lethbridge Alberta, Canada T1K 3M4

MEMBER-AT-LARGE (1986-89) Jan Randall, Biology Dept, Central Missouri State Univ, Warrensburg MO 64093

*MEMBER-AT-LARGE: (1987-90) Julia Chase, Biology Dept, Barnard College, Columbia Univ, New York NY 10027

CONTRIBUTIONS TO NEWSLETTER WELCOME

We would be pleased to receive materials for the February ABS Newsletter by 1 January 1987 and the ASZ Spring Divisional Newsletter by 1 April. Send to Terry Christenson, Dept of Psychology, Tulane Univ, New Orleans LA 70118.

APPLICATION FOR MEMBERSHIP: ANIMAL BEHAVIOR SOCIETY

Name in full _____ Degrees _____

Address _____

_____ Phone _____

Position _____ Institution _____

- _____ Member- \$32 (U.S.) Receive Animal Behaviour and Newsletter
- _____ Student Member -\$18 Receive Animal Behaviour and Newsletter
- _____ Spouse Member - \$14 Receive Newsletter

My student membership application is endorsed by (Dept Head, ABS Member or Fellow):

Name _____ Signature _____

This application form should be sent with remittance (make check payable to Animal Behavior Society or include your Mastercard

_____ or VISA # _____

Card Holder's signature _____) to:

H. Jane Brockmann, ABS Treasurer, Dept of Zoology, Univ of Florida, Gainesville FL 32611.

Terry Christenson
Dept of Psychology
Tulane University
New Orleans LA 70118

Non-Profit Organization U.S. Postage PAID New Orleans, La. Permit No. 1116
